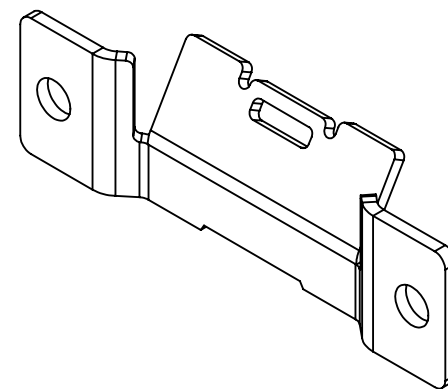
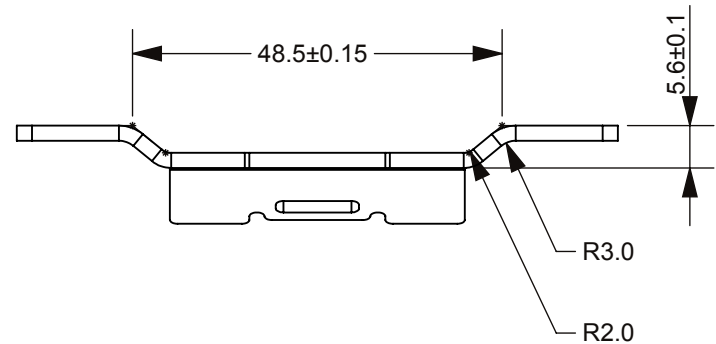
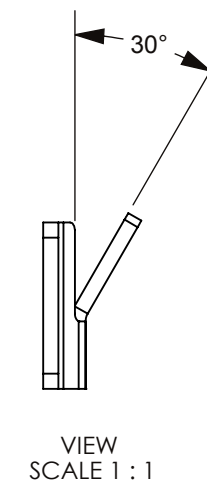
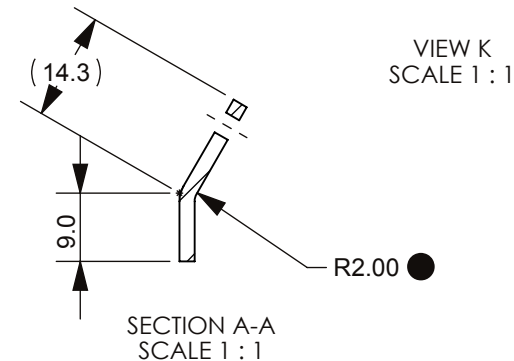
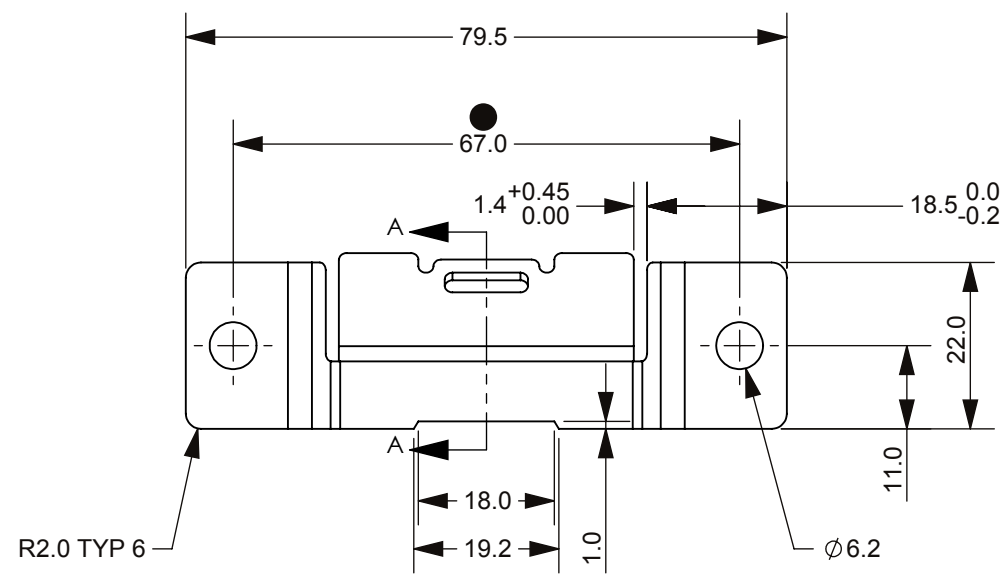
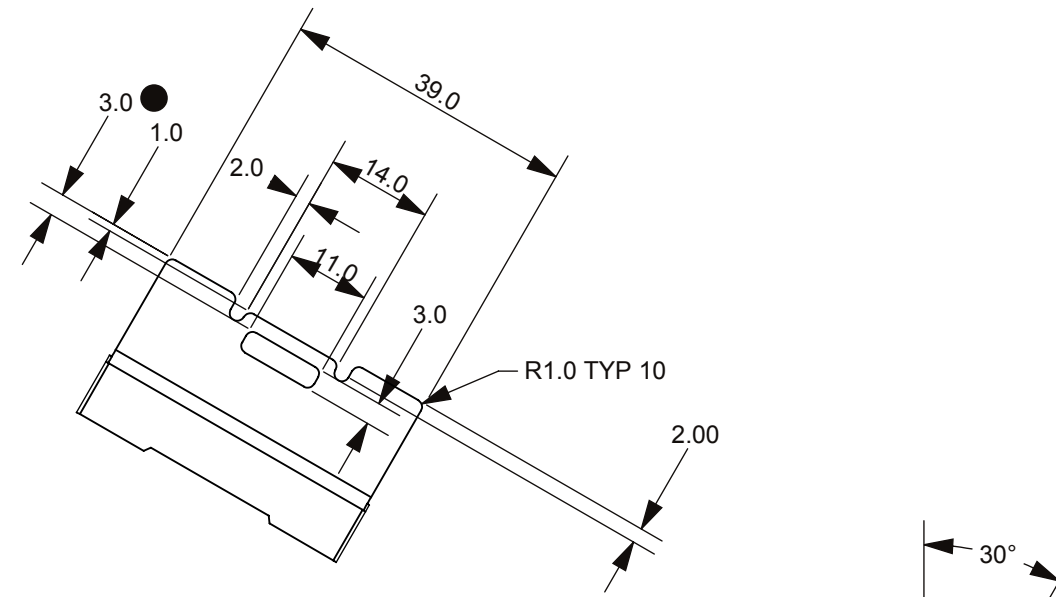
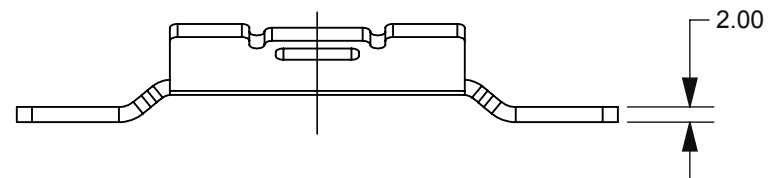


THIS DRAWING AND THE INFORMATION CONTAINED WITHIN IT ARE CONFIDENTIAL AND MAY NOT BE COPIED OR DISCLOSED WITHOUT THE WRITTEN PERMISSION OF LITTELFUSE.

REVISIONS				
ZONE	REV.	DESCRIPTION	DATE	APPROVED
	D	PRE ECO # 519876 UPDATE DRAWING, ADD NEW TEMPLATE	10/9/2018	C.MILLER



NOTES: (UNLESS OTHERWISE SPECIFIED)

1. DESCRIPTION:
 - 1.1. ASSOCIATED 3D CAD FILE DEFINES ALL NON-DIMENSIONED FEATURES.
2. MATERIAL:
 - 2.1. MATERIAL SHALL BE 2.0mm MS PLATE
 - 2.2. FINISH:BLUE ZINC PLATED (t=3-8 microns)
3. DIMENSIONING AND APPEARANCE:
 - 3.1. BLANKING BURRS MUST NOT EXCEED. (Eng to specify)
 - 3.2. 2mm MAX RADII & FILLETS PERMISSIBLE ON ALL CORNERS.
 - 3.3. ALL DIMENSIONS APPLY AFTER PLATING.

NO.	COMPONENT NO.	COMPONENT NAME	QTY/M	U/M
DIMENSIONS ARE SHOWN IN MILLIMETERS. DIMENSIONS AND TOLERANCES ARE DEFINED ACCORDING TO ANSI/ASME Y14.5-1994.				
●	DENOTES PRODUCTS CRITICAL CHARACTERISTICS			
CPK	DENOTES CPK DIMENSIONS MINIMUM CPK VALUE			
ST	DENOTES A CHARACTERISTIC THAT PROVIDES AN INDICATION OF PROCESS PERFORMANCE.PROCEDURE FOR MEASUREMENTAND TRACKINGTO BE DEFINED IN LITTELFUSE INSPECTION INSTRUCTIONS			
CP	DENOTES CP DIMENSIONS. -MINIMUM CP VALUE MUST BE WITHIN THE DIMENSIONAL LIMITATIONS SHOWN ON DRAWING AND INITIALLY LOCATED TO ALLOW FOR MAXIMUM TOOL LIFE			

TOLERANCES UNLESS OTHERWISE SPECIFIED (REF.ISO2768-M) FOR METAL						
DIMENSION	0.5 - 3	3 - 6	6 - 30	30 - 120	120 - 400	ANGLE
TOLERANCES	±0.1	±0.1	±0.2	±0.3	±0.5	±0.5°

NAME	DATE	Littelfuse®	
DRAWN - HONSTEIN	08/30/2018	Expertise Applied Answers Delivered	
CHECKED -	-	METAL BRACKET	
THIRD ANGLE PROJECTION		SIZE B	DWG. NO. 868-066
DO NOT SCALE DRAWING		SCALE 1:1	REV. D
			SHEET 1 OF 1