

Sealed Against Dust & Water Intrusion to ensure reliable circuit protection for the life of the electrical system installation.

Ignition Protected

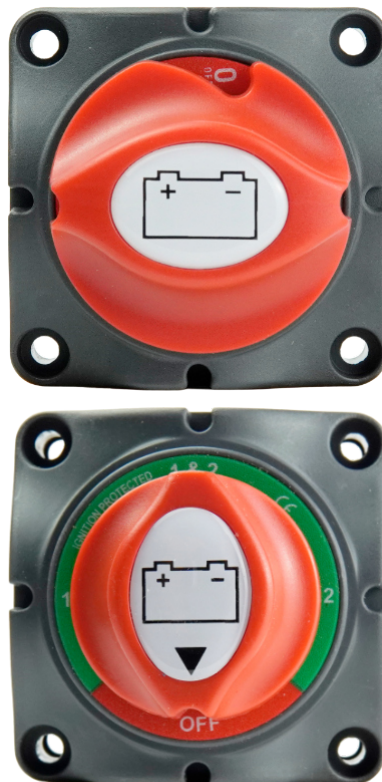
Safe for installation in closed compartments with potential explosive gases.

Compact Footprint allows for installation in areas where space is limited

Flexible Mounting Options allow for multiple mounting configurations for a variety of installation types.

Harsh Environment Design with stainless-steel locking hardware, and high temperature materials.

Easy Break Away Side Panels allow for wire routing in any direction while maintaining maximum coverage of conductors



Related Product: XD Series Add-A-Battery System



P/N: 8730-1939B



Isolates Electrical Loads from batteries when electrical system is not in use, ensuring current draw from load side of switches is eliminated.



Simple Battery Control Operation allows connecting, isolating, and combining of up to two batteries with one switch.

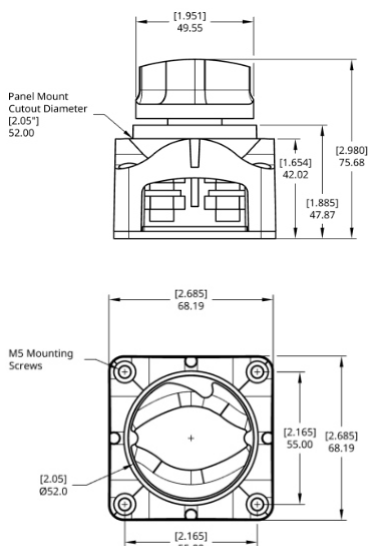


Bullet-proof Construction: Stainless-steel hardware, tin-plated copper, and high-temp materials support harsh environment applications.

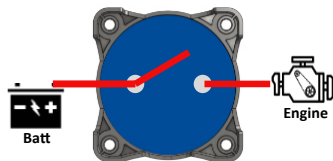
4

4 Year Industry Leading Warranty

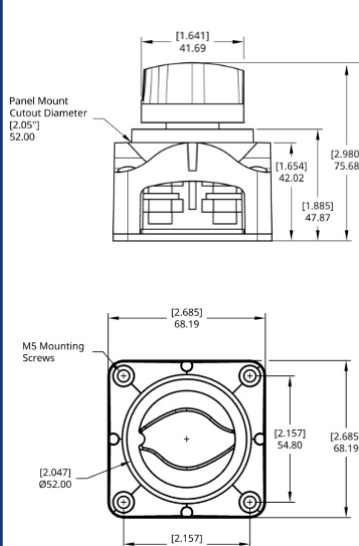
2701



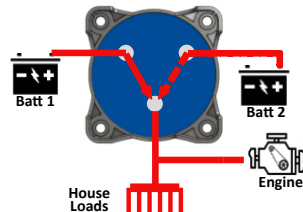
2 Position Switch ON/OFF Switch Controls a Single Circuit



2703

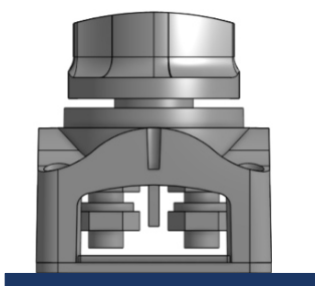


4 Position Switch Controls which Battery (or both) Supplies a Single Output

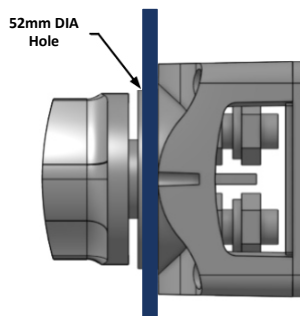


Mounting Options

Surface Mount



Panel/Bulkhead Mount



2701 Specifications

Maximum Voltage (Single Circuit)	48 Vdc
Stud Size And Thread	M10-1.5
Terminal Stud Torque	120 in-lbs (13.6 N-m)
Ring Terminal Size Acceptance	M10 - 3/8"
Mounting Holes (Hardware Included)	M5-0.8
Ignition Protected	Yes
Bulkhead / Panel - Mounting Hole Size	52mm (2.05in)
Cable Size to Meet Rating	1/0 AWG
Amperage Rating (10s / 5min / Cont)	1250 / 455 / 275 Amps

2703 Specifications

Maximum Voltage (Single Circuit)	48 Vdc
Stud Size And Thread	M8 - 1.25
Terminal Stud Torque	80 in-lbs (9 N-m)
Ring Terminal Size Acceptance	M8 (5/16")
Mounting Holes (Hardware Included)	M5-0.8
Ignition Protected	Yes
Bulkhead / Panel - Mounting Hole Size	52mm (2.05in)
Cable Size to Meet Rating	1/0 AWG
Amperage Rating (10s / 5min / Cont)	1000 / 300 / 200 Amps

Part Numbers

	Retail Pack	Bulk Pack
Battery Switch, Contour, Single Circuit	2701	2701B
Battery Switch, Contour, 4 Position Selector	2703	2703B

Related Part Numbers

	Retail Pack	Bulk Pack
m-Series Battery Switch, Key Single Circuit	2305	2305B
m-Series Battery Switch, Single Circuit	2306	2306B
m-Series Battery Switch, Single Circuit, Black	2306-200	2306-200B
m-Series Battery Switch, 4 Position Selector	2307	2307B
m-Series Battery Switch, Dual Circuit	2310	2310B
m-Series Battery Switch, Dual Circuit Plus	2311	2311B
Battery Switch, XD Series Mechanical, 500A	8710-1900	8710-1900B

Related Products - XD Relay Battery Management

XD Series - Remote Battery Switches and VSRs



Competitive Advantages

- Remote switching allows switching from the helm.
- Intelligent battery charge management allows charging and isolation with zero operator intervention.
- Can be placed directly next to batteries, resulting in heavy duty cable cost and weight savings.
- Modular for easy battery and engine expansion.
- NMEA compatible remote switching available.