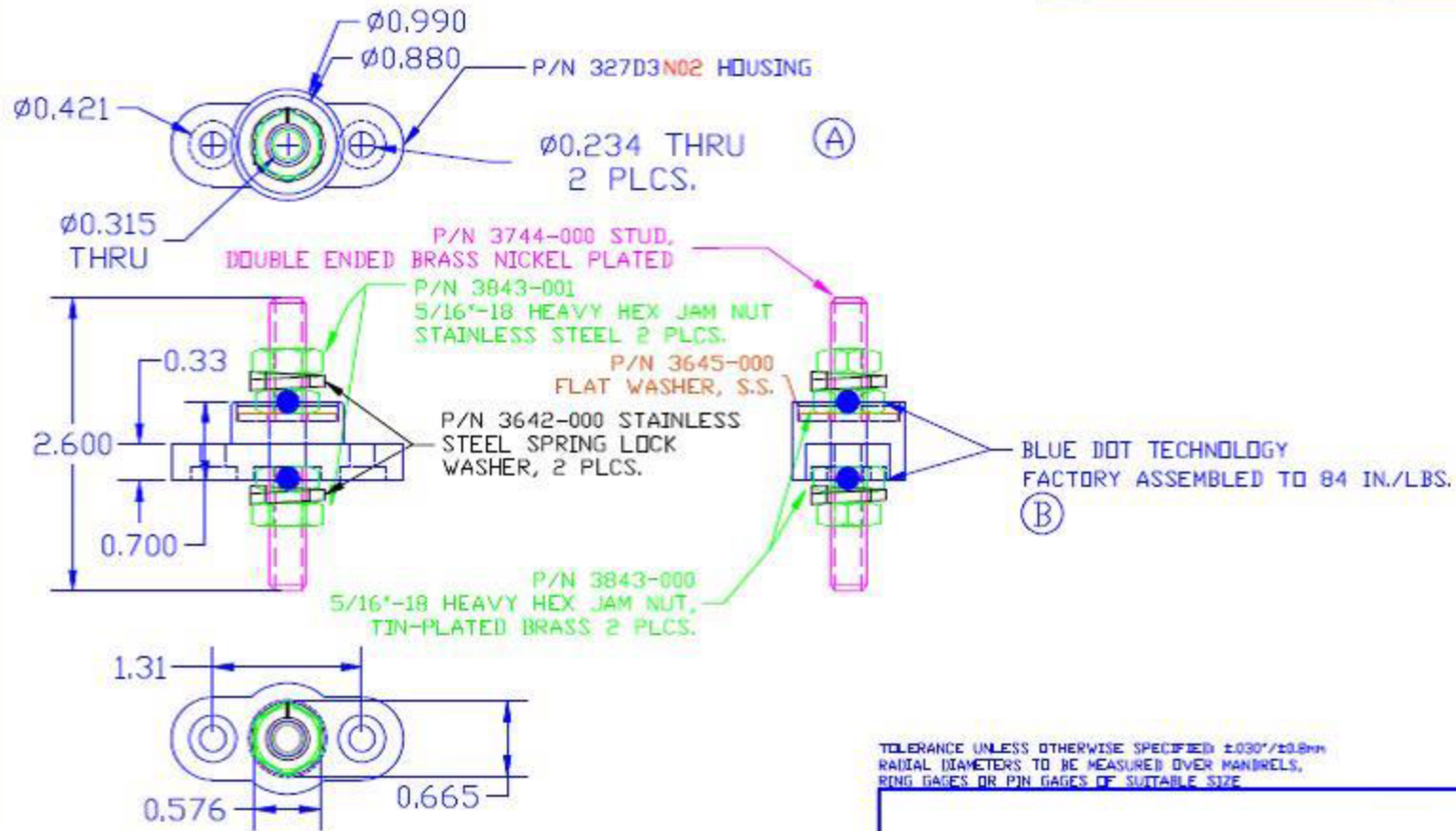


LTR.	REVISIONS	DATE
△	REDRAWN AND REDESIGNED	28NOV07
⊞	ADDED FACTORY TORQUE NOTE	14FEB02



TOLERANCE UNLESS OTHERWISE SPECIFIED: ±0.001/±0.002mm
 RADIAL DIAMETERS TO BE MEASURED OVER MANDRELS,
 RING GAGES OR PIN GAGES OF SUITABLE SIZE

BASE MATERIAL: GLASS-REINFORCED NYLON
 BASE MATERIAL U.L. RATING: 94 HB
 MAXIMUM RECOMMENDED TORQUE: 8 FT./LBS. (96 IN./LBS.)

REF: *****	DATE: 05JAN06	DRN BY: BRH	WEIGHT: *****
TITLE: PASSTHROUGH JUNCTION STUD			SCALE:
MATERIAL:		PART NO.:	
COLOR: RED	DRG CLASS: *****		