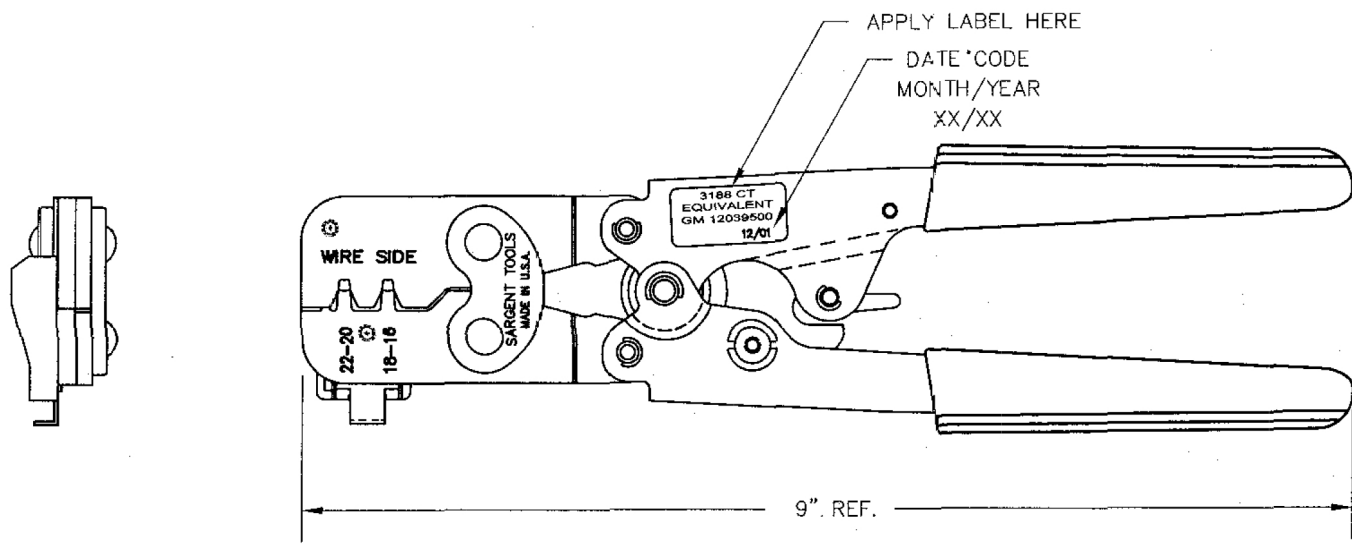
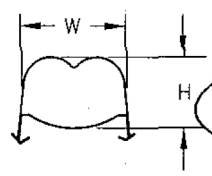


Q.C. | ENG. | MFG. ENG. | PROD. CONT. | PRESS | POLISHING | TOOL ROOM | MILLING | ASSEMBLY | CUSTOMER



NEST	CONDUCTOR		INSULATION	
	H	W	H	W
22-20	.0425	.069	.0865	.098
	.0395	REF.	REF.	REF.
18-16	.0455	.089	.0865	.098
	.0425	REF.	REF.	REF.



3188CT

GAGING USING WIRE SOLDER

HEAT TREATED COMPONENTS
 BLACK OXIDE FINISH JAW ASSEMBLY
 BLACK OXIDE FINISH HANDLES
 RATCHET CONTROLLED RELEASE
 RATCHET RELEASE LEVER
 RATCHET SET TO RELEASE WHEN A 60-70 LB.
 LOAD IS APPLIED TO HANDLES APPROX. 1 3/4"
 FROM END OF HANDLES.
 YELLOW CUSHIONED PLASTISOL GRIPS.
 WHITE FILL ALL STAMPINGS.

		EXP. RELEASE	TOLERANCES	MATERIAL
		FINAL RELEASE 12/7/01	FRAC. ±	
		SUPERSEDES	2 DEC. ±	
			3 DEC. ±	
		SCALE DWN. 1:1	4 DEC. ±	PART NAME GM 12039500 CRIMP TOOL ASSEMBLY
REVISION	APPD.		ANGLES ±	
ROSTRA TOOL COMPANY BRANFORD, CONNECTICUT 06405		CHECKED, APPD. JAK.	UNLESS OTHERWISE SPECIFIED	
			DO NOT SCALE DRAWING	
				REV.