

171-S8

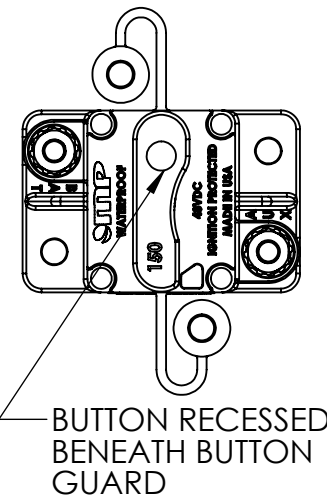
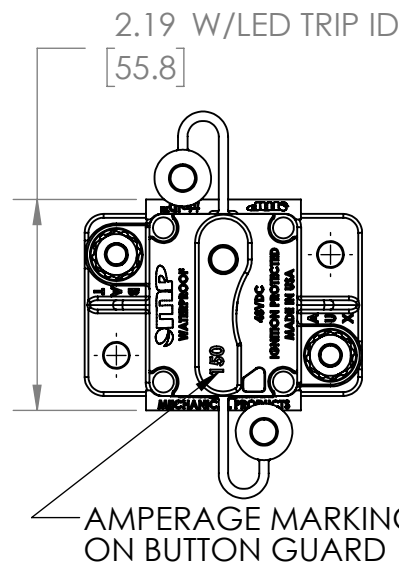
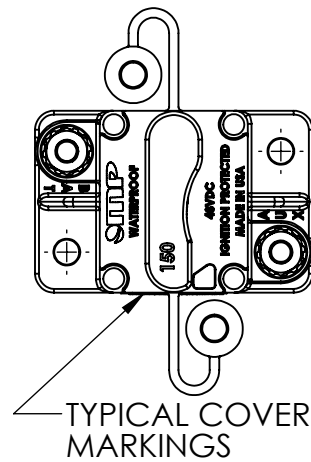
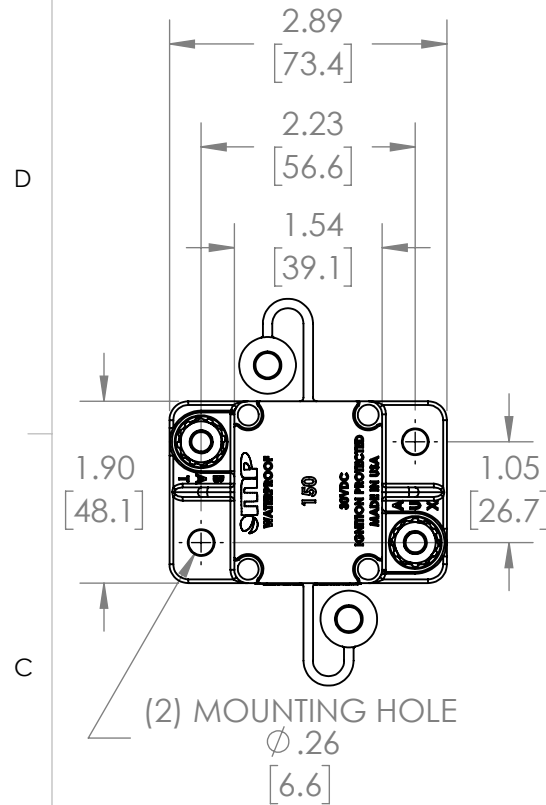
174-S8

175-S8

176-S8

REVISIONS

REV.	DESCRIPTION	ECR	DATE	APPROVED
X1	RELEASED FOR REVIEW		02-08-2016	
X2	UPDATED DRAWING P/N: 170-800-S8 WAS X2141		10-08-2019	
A	RELEASED DRAWING	12459	10-28-2019	CTH
B	REVISED P/N SCHEME 17X-S8-XXX-X-X WAS 17X-S8-XXX-X. ADDED EXAMPLE IMAGE FOR SIDE MARKING FOR -R WITH CE MARKING.	12470	02-11-2020	CTH
C	ADDED -L OPTION (LED TRIP INDICATOR), DIM 2.19 & VIEW	12491	06-24-2020	CTH
D	ADDED SHEET 2 & NEW P/N 177-S8-XXX-X-X FOR BUTTON GUARD OPTION. MOVED SPECIFICATIONS FROM SHEET 1 TO SHEET 2 FOR SPACE PURPOSE & UPDATED SPECS TO INCLUDED 177 OPTION	12601	09-07-2023	CTH



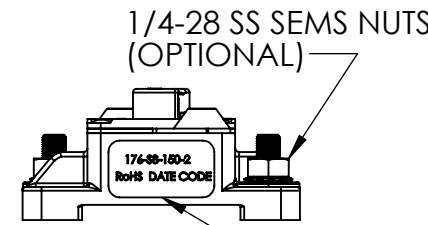
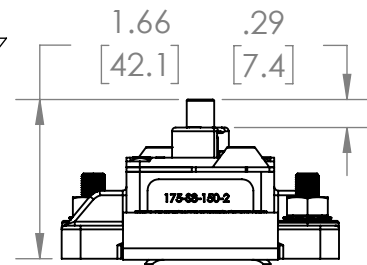
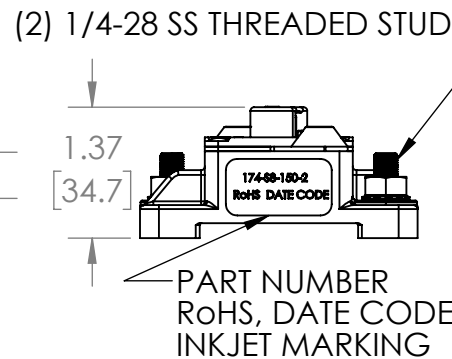
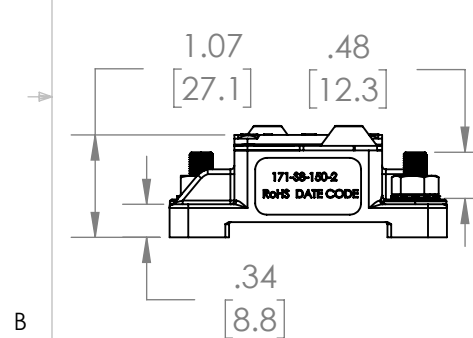
SERIES TYPE MOUNT OPTION AMPERAGE HARDWARE LED TRIP ID
17 X - S 8 - XXX - X - X - X

- 1 - TYPE I, AUTOMATIC
- 4 - TYPE III, MANUAL RESET
- 5 - TYPE III, MANUAL TRIP/RESET
- 6 - TYPE III, MANUAL TRIP/RESET W/RED RECESSED BUTTON
- 7 - TYPE III, MANUAL TRIP/RESET W/BUTTON GUARD

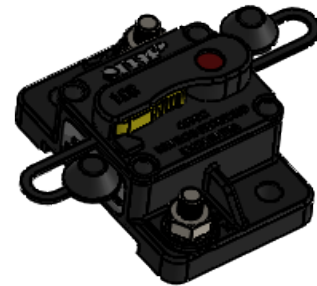
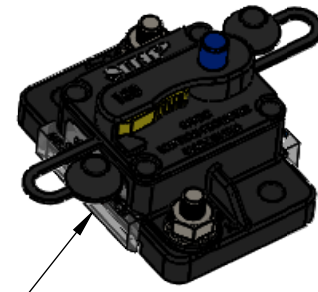
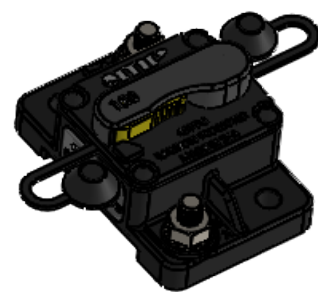
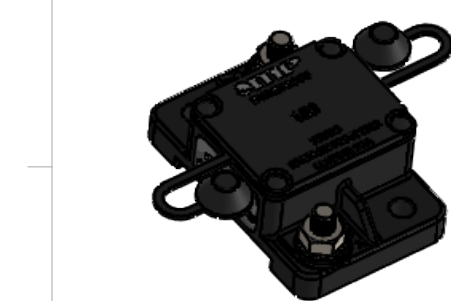
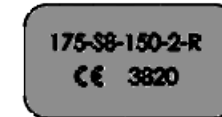
- SURFACE MOUNT
- COMPACT BODY 1/4-28 STUD

- L = 17LED-R, ASSEMBLED
- (175 ONLY)
- NONE = BLUE BUTTON & NO CE MARK
- R = RED BUTTON & CE MARK
- 0 - NONE
- 1 - SS SEMS NUTS - BULKED
- 2 - SS SEMS NUTS - INSTALLED

- 025 - 25 AMPS
- 030 - 30 AMPS
- 035 - 35 AMPS
- 040 - 40 AMPS
- 050 - 50 AMPS
- 060 - 60 AMPS
- 070 - 70 AMPS
- 080 - 80 AMPS
- 090 - 90 AMPS
- 100 - 100 AMPS
- 110 - 110 AMPS
- 120 - 120 AMPS
- 135 - 135 AMPS
- 150 - 150 AMPS




SIDE MARKING EXAMPLE FOR 175-S8-XXX-X-R
 SEE NOTE 12



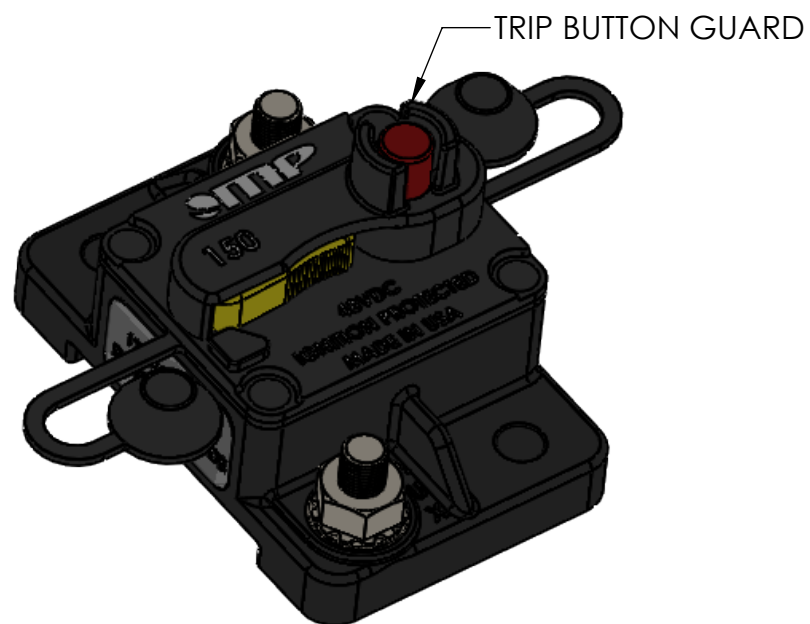
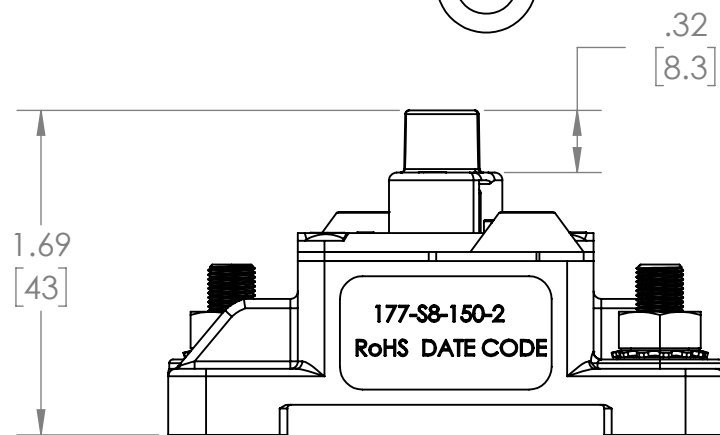
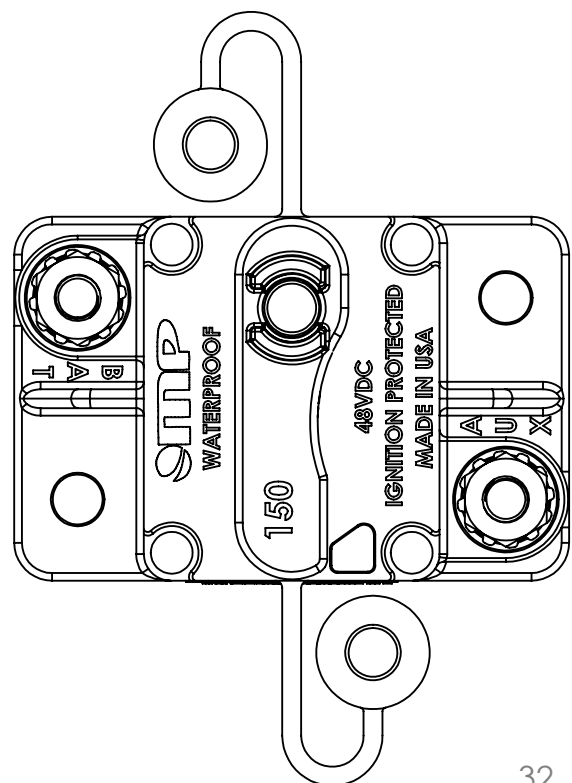
OPTIONAL: 17LED-R LED TRIP INDICATION

- NOTES:
 1. DIMENSIONS SHOWN ON 171 ALSO APPLICABLE TO 174, 175, 176 & 177.
 2. DIMENSIONS SHOWN ON 174 ALSO APPLICABLE TO 175, 176 & 177.

PROPRIETARY AND CONFIDENTIAL
 THE INFORMATION CONTAINED IN THIS DRAWING IS THE SOLE PROPERTY OF MECHANICAL PRODUCTS, CO. ANY REPRODUCTION IN PART OR AS A WHOLE WITHOUT THE WRITTEN PERMISSION OF MECHANICAL PRODUCTS, CO. IS PROHIBITED.

UNLESS OTHERWISE SPECIFIED:		NAME	DATE	 Mechanical Products, Co. 1112 Garfield Street Lombard, IL 60148
DIMENSIONS ARE IN MM/INCHES		CTH	02-08-16	
TOLERANCES:		DRAWN		TITLE:
METRIC: .X ± .25 .XX ± .13		CHECKED		HI-AMP, SHORT BASE CIRCUIT BREAKER
ENGLISH: .XX ± .01 .XXX ± .005		ENG APPR.		
ANGLES: ±1°		MFG APPR.		SIZE
FRACTIONAL: ±		Q.A.		DWG. NO.
INTERPRET GEOMETRIC TOLERANCING PER:		COMMENTS:		REV
MATERIAL				B
FINISH				170-800-S8
NEXT ASSY	USED ON			D
APPLICATION				SCALE: 1:1
DO NOT SCALE DRAWING				WEIGHT:
				SHEET 1 OF 2

177-S8




REVISIONS				
REV.	DESCRIPTION	ECR	DATE	APPROVED
	SEE SHEET 1			

SPECIFICATIONS:

1. MATERIALS:
 - A. CASE MATERIAL: BLACK, UL94 V-0 RATED THERMOPLASTIC
 - B. TERMINATION STUDS: STAINLESS STEEL
2. CURRENT RATING: 25A TO 150A
3. VOLTAGE RATING:
 - A. 171 (TYPE I): 30VDC MAX
 - B. 174, 175, 176 & 177 (TYPE III): 48VDC MAX
4. INTERRUPT RATING:
 - A. 171 (TYPE I): 3000A @ 30VDC
 - B. 174, 175, 176 & 177 (TYPE III): 1500A @ 48VDC
5. OPERATING TEMPERATURE: -40°C TO +85°C
6. MOUNTING TORQUE: 50 IN-LBS [5.6 N.m] MAX
7. TERMINATION TORQUE: 50 IN-LBS [5.6 N.m] MAX
8. INGRESS PROTECTION: IP67
9. IGNITION PROTECTED (SAE J1171)
10. MEETS SAE J1625 & ABYC E-11
11. RoHS COMPLIANT
12. CE MARK TO BE SCALED PER DRAWING 1900-710-1

PROPRIETARY AND CONFIDENTIAL
 THE INFORMATION CONTAINED IN THIS DRAWING IS THE SOLE PROPERTY OF MECHANICAL PRODUCTS, CO. ANY REPRODUCTION IN PART OR AS A WHOLE WITHOUT THE WRITTEN PERMISSION OF MECHANICAL PRODUCTS, CO. IS PROHIBITED.

		UNLESS OTHERWISE SPECIFIED:		NAME	DATE	 Mechanical Products, Co. 1112 Garfield Street Lombard, IL 60148
		DIMENSIONS ARE IN MM/INCHES TOLERANCES: METRIC: .X±.25 .XX±.13 ENGLISH: .XX±.01 .XXX±.005 ANGLES: ±1° FRACTIONAL: ±		DRAWN	CTH	
		INTERPRET GEOMETRIC TOLERANCING PER:		ENG APPR.		TITLE: HI-AMP, SHORT BASE CIRCUIT BREAKER
		MATERIAL		MFG APPR.		
NEXT ASSY	USED ON	FINISH		Q.A.		SIZE B DWG. NO. 170-800-S8 REV D
APPLICATION		DO NOT SCALE DRAWING		COMMENTS:		SCALE: 1:2 WEIGHT: SHEET 2 OF 2