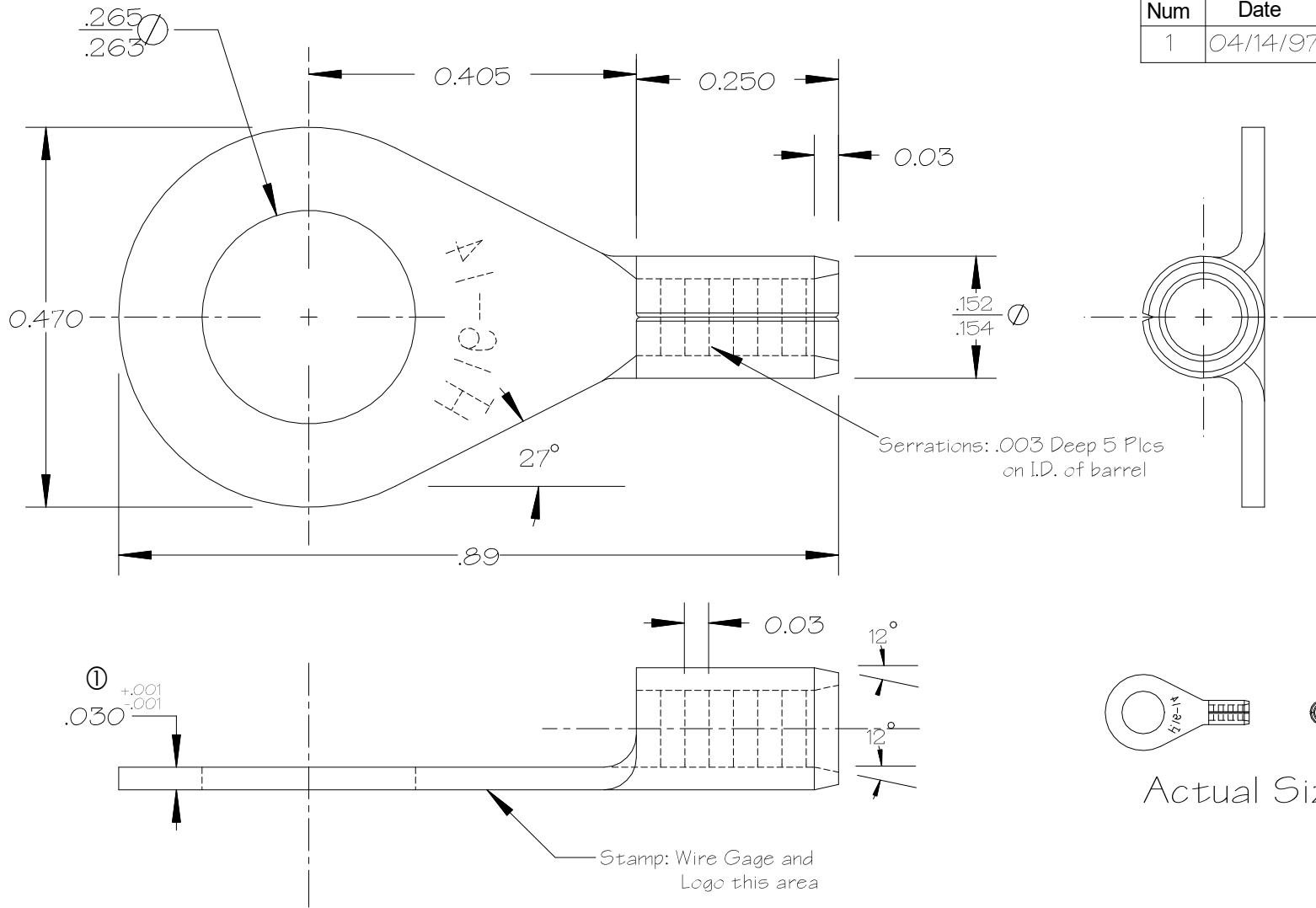


Num	Date	By	Revision Note
1	04/14/97	jrc	was .028



Notes:

1. Material: ETP Alloy 110 Copper 1/2 Hard Temper  
ASTM Spec B152
2. Heat Treat: Anneal to Soft Temper
3. Finish: Flash Electro Tin Plate  
ASTM Spec B545  
Mil Spec: Mil-T-10727C Type I  
.0001-.00025 Thick

NOTES

1. DO NOT SCALE PRINT.
2. BREAK ALL NON-CUTTING EDGES.
3. STAMP OR ETCH HTT,  
DET NO., MAT'L, & HEAT TREAT
4. GRIND AS SHOWN.

<b>TOLERANCES</b>		<b>Hillsdale Terminal</b>		250 Industrial Drive 2222 W. Moore Rd. Hillsdale, Michigan 49242	
UNLESS OTHERWISE SPECIFIED		Title Uninsulated			
.XXX	+/- .010	16-14 GA. 1/4" Stud Ring			
.XX	+/- .020	DRAWN BY J. Condon		DATE 03/07/94	
.X	+/- .030	CHECKED BY		SCALE 5X	
FRACTIONS	+/- 1/32	DIE NUMBER D-21		SHEET SIZE A	
ANGLES	+/- 0°30'	MATERIAL See Notes		CAD DRAWING # 10101	