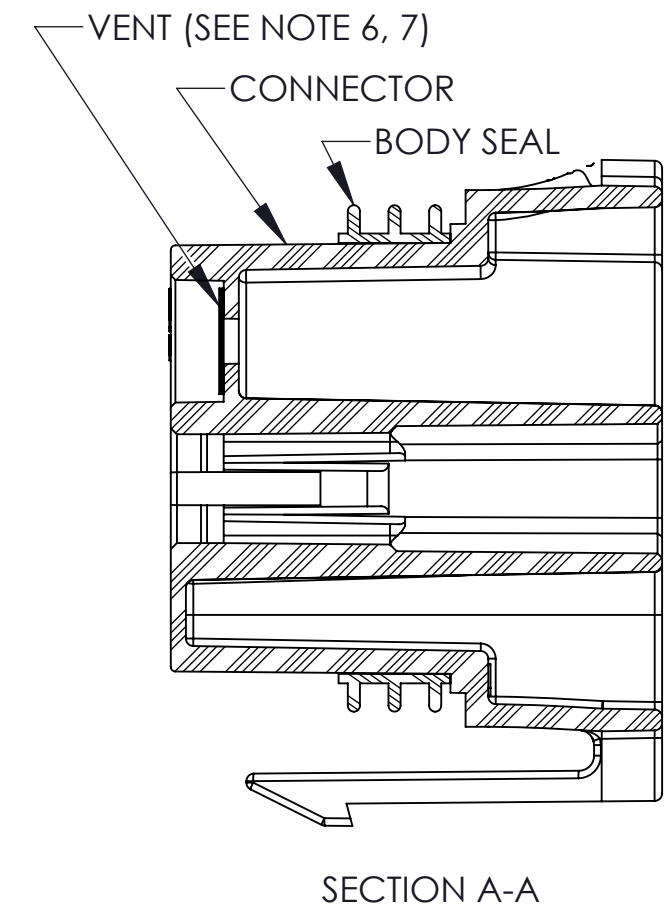
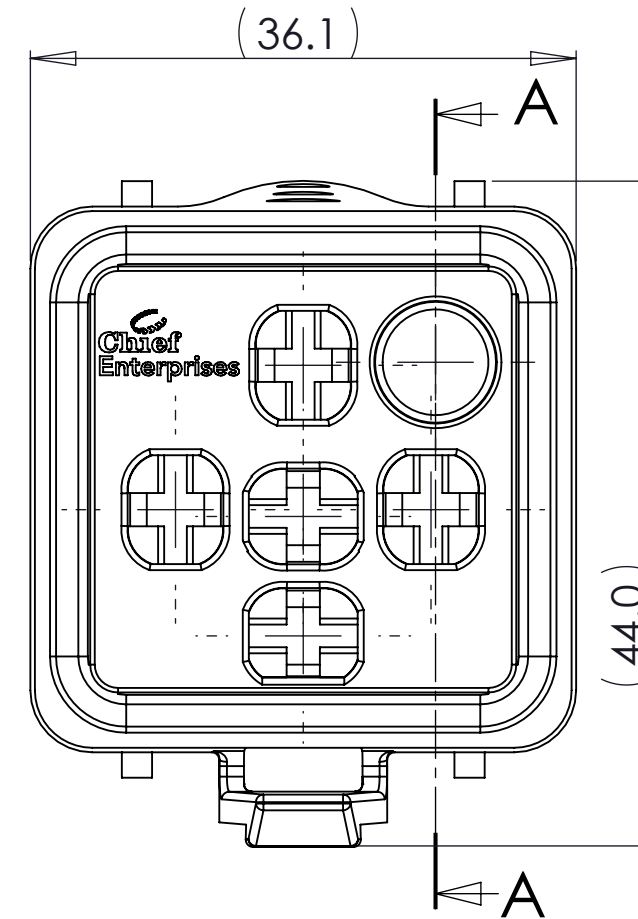
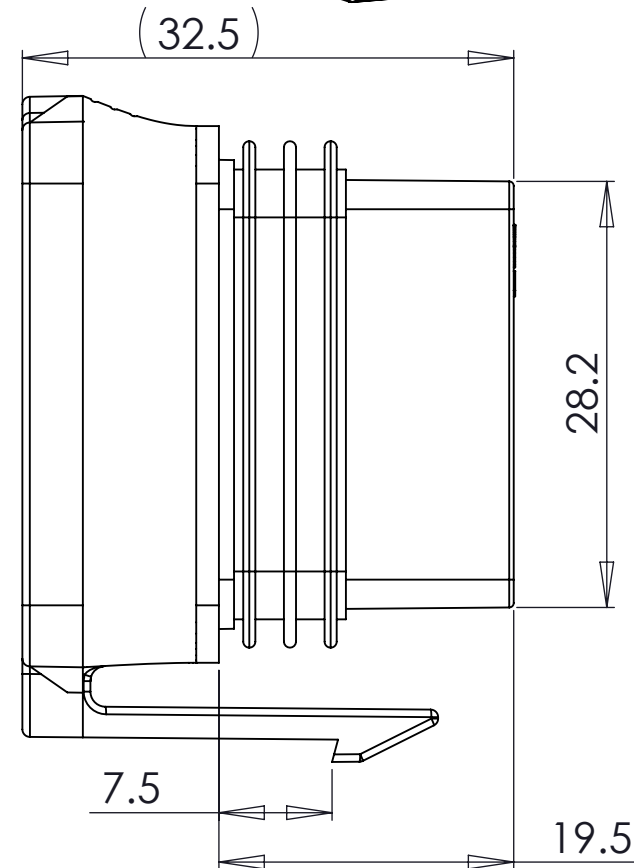
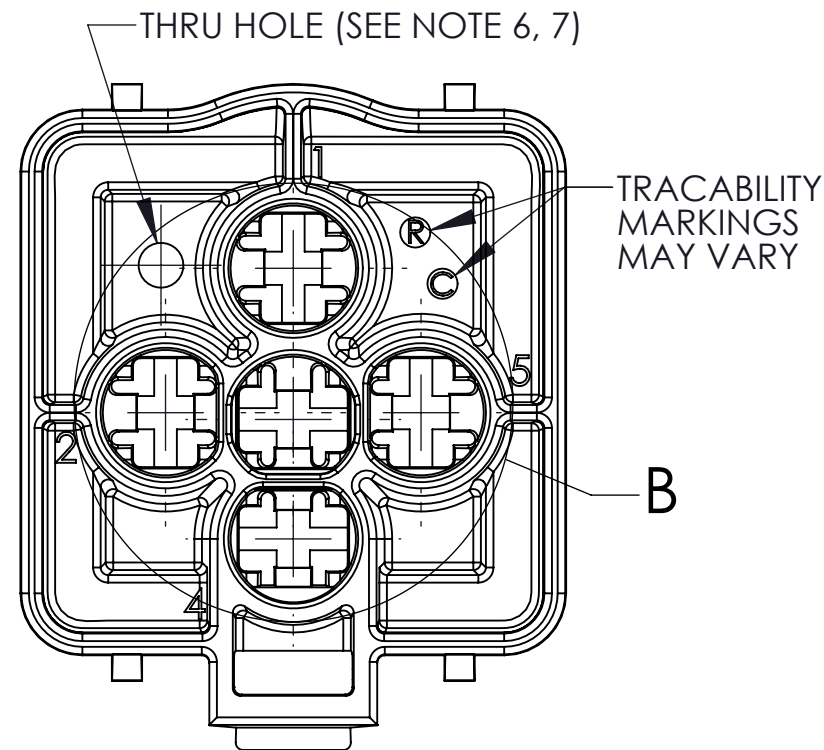


WIRE SIZE (mm ²)	TERM STRIP PN	TERM LOOSE PN
0.50 - 1.0	x-1241412-x	x-1241413-x
>1.0 - 2.5	x-1241414-x	x-1241415-x
>2.5 - 4.0	x-1241416-x	x-1241417-x
>4.0 - 6.0	x-1241418-x	x-1241419-x

Part Number	C1256
-------------	-------

INSULATION DIA (mm)	SWS PN
1.2 - 2.0	2177018-1
2.0 - 2.7	1394511-1
2.7 - 3.0	1823111-1
3.4 - 3.7	1394512-1
4.0 - 4.5	1719043-1
PLUG	967652-1



- NOTES:
- CONNECTOR MATERIAL: NYLON 66 GF IM HS
 - BODY SEAL MATERIAL: SILICONE
 - VENT MATERIAL: PTFE
 - USE WITH TE MCP 6.3 TERMINALS
 - USE WITH WEATHERPROOF ISO RELAY
 - C1256 WITHOUT VENT OR THRU HOLE
 - C1257 WITH VENT AND THRU HOLE
 - TERMINALS AND SWS NOT INCLUDED, TABLES FOR REF ONLY

Primary Units	Third Angle Proj.				
<input checked="" type="checkbox"/> Metric (mm)	<input type="checkbox"/> English (inch)				
Tolerances If Not Specified					
Metric:	English:				
0...6 ±.2	X.X ±.1	2	UPDATED SWS PN	KH	6-DEC-2018
>6...30 ±.3	X.XX ±.01	1	CORRECTED NOTES 6 & 7	KH	2-FEB-2017
>30 ±.5	X.XXX ±.005	0	FIRST DRAWN		16-NOV-2016
Angles ±	Angles ±				
K. HULTQUIST	16-NOV-2016				
Drawn By	Date	CAD Drawing	Rev	Change	By Date Chk

Chief Enterprises

Parts Specialist. Solutions Driven.

Part Number	C1256
Part Name	WEATHERPROOF RELAY CONNECTOR
Scale	2:1

This drawing is the exclusive property of Chief Enterprises Inc. and may not be copied or given to a third party without our written consent.

It is the users responsibility to verify that this drawing is still active and that this is latest rev.