

MATERIAL SPECIFICATIONS

RECOMMENDED

BASE METAL - COP-210, EXTRA SPRING TEMPER

TIN PLATING (WHERE APPLICABLE TO 100% MAX CONTINUOUS USAGE) 0.000250 IN (6.35 MICRONS) MIN ELECTROLYTIC TIN, NO DISCONTINUITIES PERMISSIBLE

USAGE OF PLATING TYPES OTHER THAN RECOMMENDED MUST BE APPROVED BY DELPHI PACKARD ELECTRIC SYSTEMS ENGINEERING

MINIMUMS

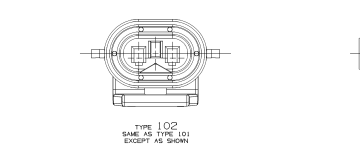
ELECTRICAL CONDUCTIVITY - 2000 IACS AT 20°C, USE OF A MATERIAL WITH CONDUCTIVITY 20% LOWER MUST BE APPROVED BY PACKARD ELECTRIC MATERIALS ENGINEERING

TENSILE STRENGTH - 430 - 480 MPa

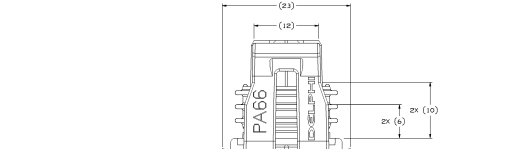
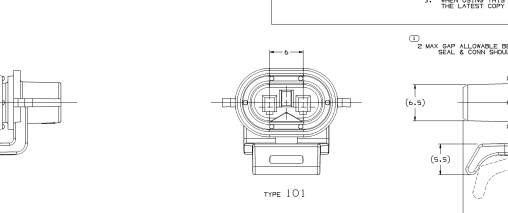
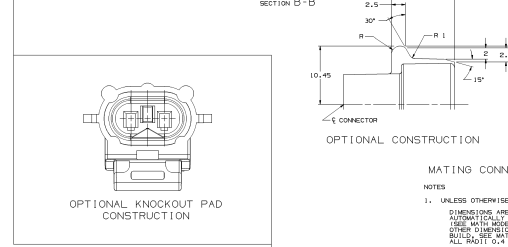
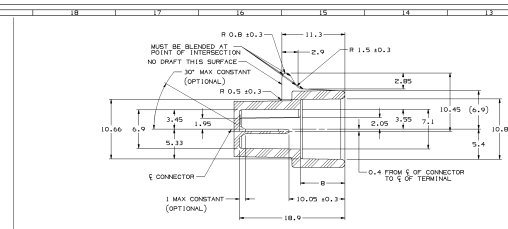
UNDERPLATING FOR TIN PLATING - FOR BASE MATERIALS CONTAINING 10% OR MORE ZINC, AN UNDERPLATE OF COPPER COLORED AN 100 Å MINIMUM THICK IS REQUIRED.

PROCESSING LUBRICANT - ANY PROCESSING LUBRICANT REMAINING ON TERMINALS MUST BE REMOVED BY WASHING. THE ELECTRICAL PERFORMANCE OF THE CONNECTION UP TO A MAXIMUM TEMPERATURE OF 175°C. PROCESSING LUBRICANTS MUST BE APPROVED BY DELPHI PACKARD ELECTRIC SYSTEMS ENGINEERING.

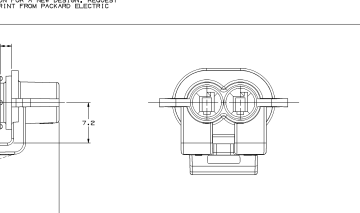
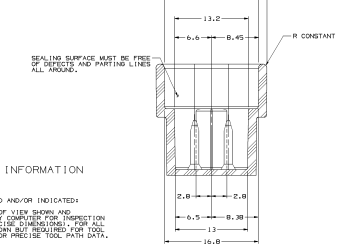
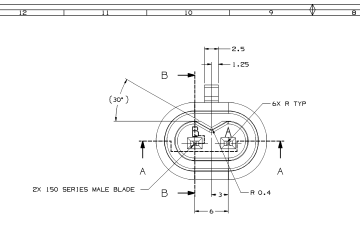
MATING BLADE INFORMATION



TYPE 102
SAME AS TYPE 101
EXCEPT AS SHOWN



TYPE 101



TYPE 102

MATING CONNECTOR INFORMATION

NOTES

- UNLESS OTHERWISE SPECIFIED AND/OR INDICATED: DIMENSIONS ARE TO FACE OF VIEW SHOWN AND AUTOMATICALLY DIMENSIONED BY COMPUTER FOR IMPROVED CLARITY. DIMENSIONS NOT SHOWN BUT REQUIRED FOR TOOL BUILD, SEE MATH MODEL FOR PRECISE TOOL PATH DATA. ALL DIMENSIONS 0.4
- RECOMMENDED MATERIAL - GLASS FILLED NYLON OR POLYESTER
- WHEN USING THIS INFORMATION FOR A NEW DESIGN, REQUEST THE LATEST COPY OF THIS PRINT FROM PACKARD ELECTRIC

SYMBOL DEFINITION		MISSING SYMBOLS	
ALSO DIMENSION WITHOUT AN INSPECTION REPORT SYMBOL (UNLESS NOT REQUIRED INSPECTION) IT MAY BE CONTROLLED ON THE INDIVIDUAL COMPONENT DRAWING.	TOTAL NO. OF INSPECTIONS REQUIRED	1	2
USE NO.			

REV	DATE	BY	CHKD	DESCRIPTION
000001	01			RELEASED KEY COL. 8 DIMENSIONS - RELEASED
000002	02			PACKAGED - RELEASED DIMENSIONS
000003	03			1544775 - RELEASED
000004	04			ALL PARTS - UPDATED FOR ATTACHMENTS
000005	05			1544775 - RELEASED AND ADDED DIMENSIONS



OPTIONAL KNOCKOUT PAD CONSTRUCTION

MATING CONNECTOR INFORMATION

NOTES

- UNLESS OTHERWISE SPECIFIED AND/OR INDICATED: DIMENSIONS ARE TO FACE OF VIEW SHOWN AND AUTOMATICALLY DIMENSIONED BY COMPUTER FOR IMPROVED CLARITY. DIMENSIONS NOT SHOWN BUT REQUIRED FOR TOOL BUILD, SEE MATH MODEL FOR PRECISE TOOL PATH DATA. ALL DIMENSIONS 0.4
- RECOMMENDED MATERIAL - GLASS FILLED NYLON OR POLYESTER
- WHEN USING THIS INFORMATION FOR A NEW DESIGN, REQUEST THE LATEST COPY OF THIS PRINT FROM PACKARD ELECTRIC



NOTES

- UNLESS OTHERWISE SPECIFIED AND/OR INDICATED: DIMENSIONS ARE TO FACE OF VIEW SHOWN AND AUTOMATICALLY DIMENSIONED BY COMPUTER FOR IMPROVED CLARITY. DIMENSIONS NOT SHOWN BUT REQUIRED FOR TOOL BUILD, SEE MATH MODEL FOR PRECISE TOOL PATH DATA.
- INLET PARTS ARE SHOWN THEY MUST BE MADE IN PLASTIC BAGS OR SHIPPING CONTAINERS MUST BE LINED WITH PLASTIC LINERS. BAGS OR LINERS MUST BE SEALED TO PREVENT FUMES FROM MATING POINT OR BLOWING.
- SEALING CODE 3 - DESIGN WILL PASS SALT FOG AND IMMERSION TEST AFTER CHECKING FOR SPECIFIED DEFECTS (DROPS, CRACKS, DISCOLORATION, ETC.) AND MATED TO MATING POINT OR BLOWING.
- THIS PRODUCT IS NOT CATEGORIZED AS AN APPEARANCE ITEM, MINOR DEFECTS ARE PERMISSIBLE. FOR PART NUMBER, COLOR, DIMENSIONS, DATE, VERSION, AND SORT FLASH THAT DO NOT AFFECT THE FIT, FORM, OR FUNCTION OF THE PART ARE PERMISSIBLE PER DRAW 47-105-01.
- FOR APPLICATION DATA SEE THE INDIVIDUAL APPLICATION DRAWINGS.

REV	DATE	BY	CHKD	DESCRIPTION
000001	01			RELEASED KEY COL. 8 DIMENSIONS - RELEASED
000002	02			PACKAGED - RELEASED DIMENSIONS
000003	03			1544775 - RELEASED
000004	04			ALL PARTS - UPDATED FOR ATTACHMENTS
000005	05			1544775 - RELEASED AND ADDED DIMENSIONS

REV	DATE	BY	CHKD	DESCRIPTION
000001	01			RELEASED KEY COL. 8 DIMENSIONS - RELEASED
000002	02			PACKAGED - RELEASED DIMENSIONS
000003	03			1544775 - RELEASED
000004	04			ALL PARTS - UPDATED FOR ATTACHMENTS
000005	05			1544775 - RELEASED AND ADDED DIMENSIONS

88279801

150828