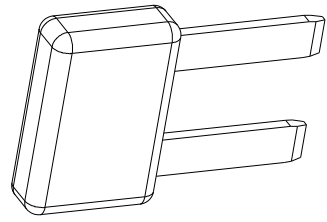


A

A

REV	REVISION DETAILS	ECO	DATE	BY	ABY
0	INITIAL RELEASE	N/A	09-08-2010	N/A	N/A
1	UPDATED TO LATEST DRAWING FORMAT. UPDATED DESCRIPTION AND NOTES.	NP-006033	03-15-2024	JWK	JML



ISO VIEW
FOR REF ONLY

B

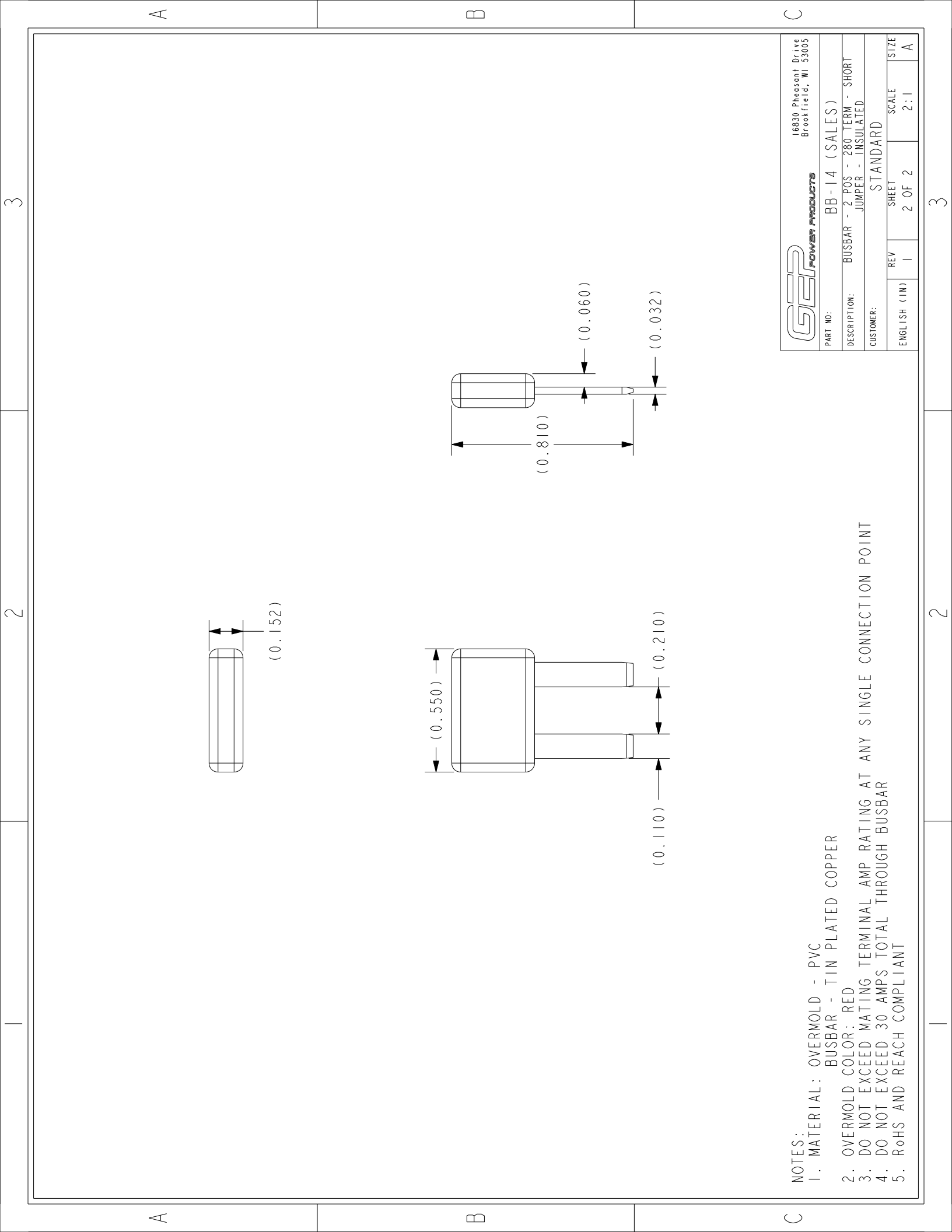
B

<p>CONFIDENTIAL</p> <p>The information contained in this document is the property of GEP Power Products. It is not for public disclosure. Possession of the information does not convey any right to loan, sell or disclose the information. Unauthorized reproduction or use of the information is prohibited. This document is to be returned to GEP Power Products upon completion of the purpose for which it is loaned or upon request.</p>	
<p>△ CRITICAL DIMENSIONS ON FEATURES TO BE CHECKED DURING ANY SET-UP ADJUSTMENTS, TOOL CHANGES, OR ANNUAL MAINTENANCE ON TOOLING.</p>	<p>○ DIMENSIONS OR FEATURES TO BE CHECKED FROM RUN-TO-RUN</p>
<p>TOLERANCES UNLESS OTHERWISE SPECIFIED</p>	<p>THIRD ANGLE PROJECTION</p>
<p>METRIC TOL</p>	<p>ENGLISH TOL</p>
<p>1 PL DEC. = ±.25 2 PL DEC. = ±.13</p>	<p>ANGULAR TOL = ±2° FRACTION TOL = ±1/64 IN</p>
<p>DIMENSIONS INSIDE PARENTHESES OR CONTAINING "REF" ARE FOR REFERENCE ONLY.</p>	
<p>1 PL DEC. = ±.01 3 PL DEC. = ±.005</p>	
<p>Copyright - GEP POWER PRODUCTS</p> <p>This is unpublished work. The disclosure of this work is limited to a select personnel. Further dissemination or disclosure to the public is PROHIBITED. This unpublished work is protected by Federal Copyright law and all rights thereunder are reserved by GEP Power Products.</p>	

C


C

		16830 Pheasant Drive Brookfield, WI 53005	
PART NO:	BB-14 (SALES)		
DESCRIPTION:	BUSBAR - 2 POS - 280 TERM - SHORT JUMPER - INSULATED		
CUSTOMER:	STANDARD		
ENGLISH (IN)	REV	SHEET	SCALE
	1	1 OF 2	2:1
			SIZE
			A



NOTES:

1. MATERIAL: OVERMOLD - PVC
BUSBAR - TIN PLATED COPPER
2. OVERMOLD COLOR: RED
3. DO NOT EXCEED MATING TERMINAL AMP RATING AT ANY SINGLE CONNECTION POINT
4. DO NOT EXCEED 30 AMPS TOTAL THROUGH BUSBAR
5. RoHS AND REACH COMPLIANT

 POWER PRODUCTS		16830 Pheasant Drive Brookfield, WI 53005	
		PART NO: BB-14 (SALES)	
DESCRIPTION: BUSBAR - 2 POS - 280 TERM - SHORT JUMPER - INSULATED		CUSTOMER: STANDARD	
ENGLISH (IN)	REV	SHEET	SCALE
	1	2 OF 2	2:1
			SIZE
			A

A

B

C

A

B

C

2

3

2

3