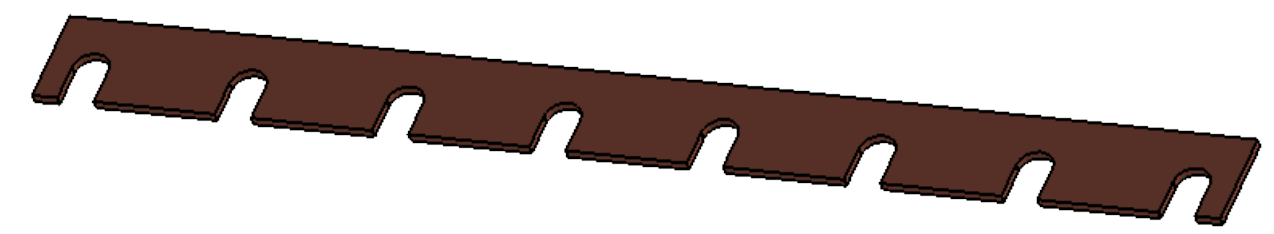
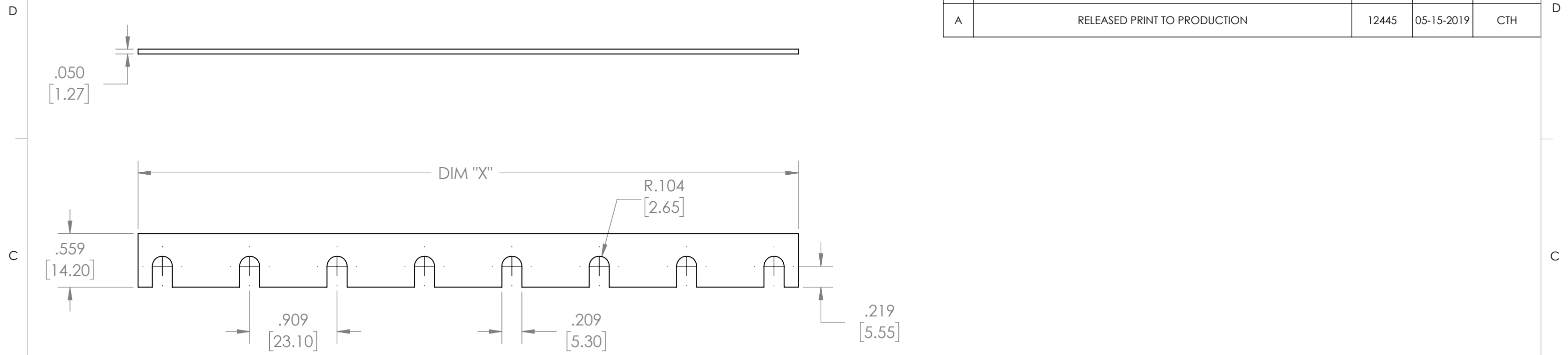


320-402-8 8-POSITIONS BUSBAR

REVISIONS				
REV.	DESCRIPTION	ECR	DATE	APPROVED
X1	RELEASED FOR QUOTE		04-02-2019	
X2	ADDED TABLE FOR 2 TO 12 POSITIONS & MATERIAL HARDNESS, CHANGE P/N FROM X2169-X TO 320-402-X		05-13-2019	
A	RELEASED PRINT TO PRODUCTION	12445	05-15-2019	CTH



MP P/N	DIM "X"	# OF POSITIONS
320-402-2	1.41 [35.8mm]	2 POSITIONS
320-402-4	3.23 [82.1mm]	4 POSITIONS
320-402-6	5.05 [128.3mm]	6 POSITIONS
320-402-8	6.87 [174.5mm]	8 POSITIONS
320-402-10	8.69 [220.7mm]	10 POSITIONS
320-402-12	10.51 [267.0mm]	12 POSITIONS

NOTES:
1. MATERIAL: COPPER C110, 1/2 HARD OR EQUIVALENT

PROPRIETARY AND CONFIDENTIAL
THE INFORMATION CONTAINED IN THIS DRAWING IS THE SOLE PROPERTY OF MECHANICAL PRODUCTS, CO. ANY REPRODUCTION IN PART OR AS A WHOLE WITHOUT THE WRITTEN PERMISSION OF MECHANICAL PRODUCTS, CO. IS PROHIBITED.

	UNLESS OTHERWISE SPECIFIED:	NAME	DATE	 Mechanical Products, Co. 1112 Garfield Street Lombard, IL 60148
	DIMENSIONS ARE IN MM/INCHES	DRAWN	CTH	
	TOLERANCES:	CHECKED		
	METRIC: .X ± .25 .XX ± .13	ENG APPR.		
	ENGLISH: .XX ± .01 .XXX ± .005	MFG APPR.		
	ANGLES: ± 1°	Q.A.		
	FRACTIONAL: ±	COMMENTS:		
	INTERPRET GEOMETRIC TOLERANCING PER:			
	MATERIAL			
	FINISH			
NEXT ASSY	USED ON			
APPLICATION		DO NOT SCALE DRAWING		

TITLE:		
BUSBAR (TO BE USE W/320-401-X BRACKET, 32 SERIES)		
SIZE	DWG. NO.	REV
B	320-402-X	A
SCALE: 1:1		SHEET 1 OF 1