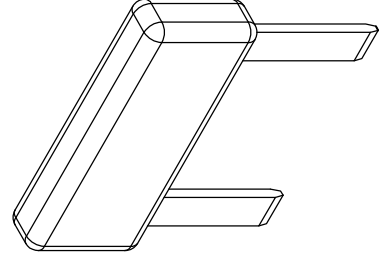
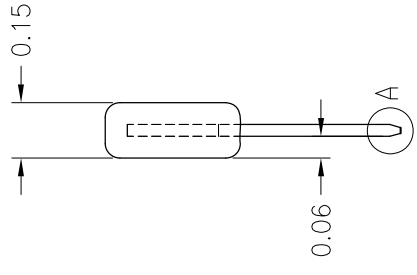
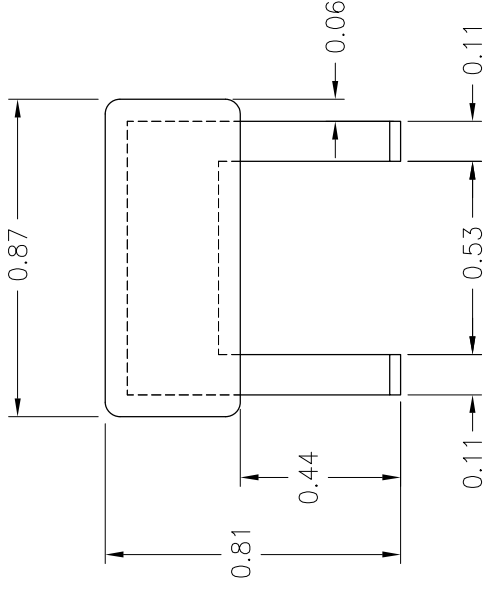


PART NO. BB-13 Sales	
TITLE BUSS BUR 2 Long Terminal	
ENGLISH(KIN)	SCALE FULL
REV #	REVISION
0	INITIAL RELEASE
DATE	DK
09-08	
2010	



DETAIL A

- NOTES:
1. ALL DIMENSIONS ARE FOR REFERENCE ONLY;
 2. MATERIAL: TIN PLATED COPPER, MINIMUM .0003";
 3. OVERMOLD: PVC, RED;
 4. REMOVE ALL BURRS AND SHARP EDGES.

CONFIDENTIAL — The information contained in this document is the property of GEP Power Products. It is not for public disclosure. Possession of the information does not convey any right to loan, sell or disclose the information. Unauthorized reproduction or use of the information is prohibited. This document is to be returned to GEP Power Products upon completion of the purpose for which it is loaned or upon request.

GEP POWER PRODUCTS
765 IL Route 83 Suite 113
Bensenville, IL, 60106

COPYRIGHT — GEP Power Products
This is an unpublished work. The disclosure of this work is limited to a select personnel. Further dissemination or disclosure to the public is PROHIBITED. This unpublished work is protected by Federal Copyright law and all rights thereunder are reserved by GEP Power Products.

TOLERANCES UNLESS OTHERWISE SPECIFIED		THIRD ANGLE PROJECTION
METRIC TOL	ENGLISH TOL	
1 PL DEC.=±.25	2 PL DEC.=±.01	
2 PL DEC.=±.13	3 PL DEC.=±.005	FRACTION TOL= ± 1/64 IN