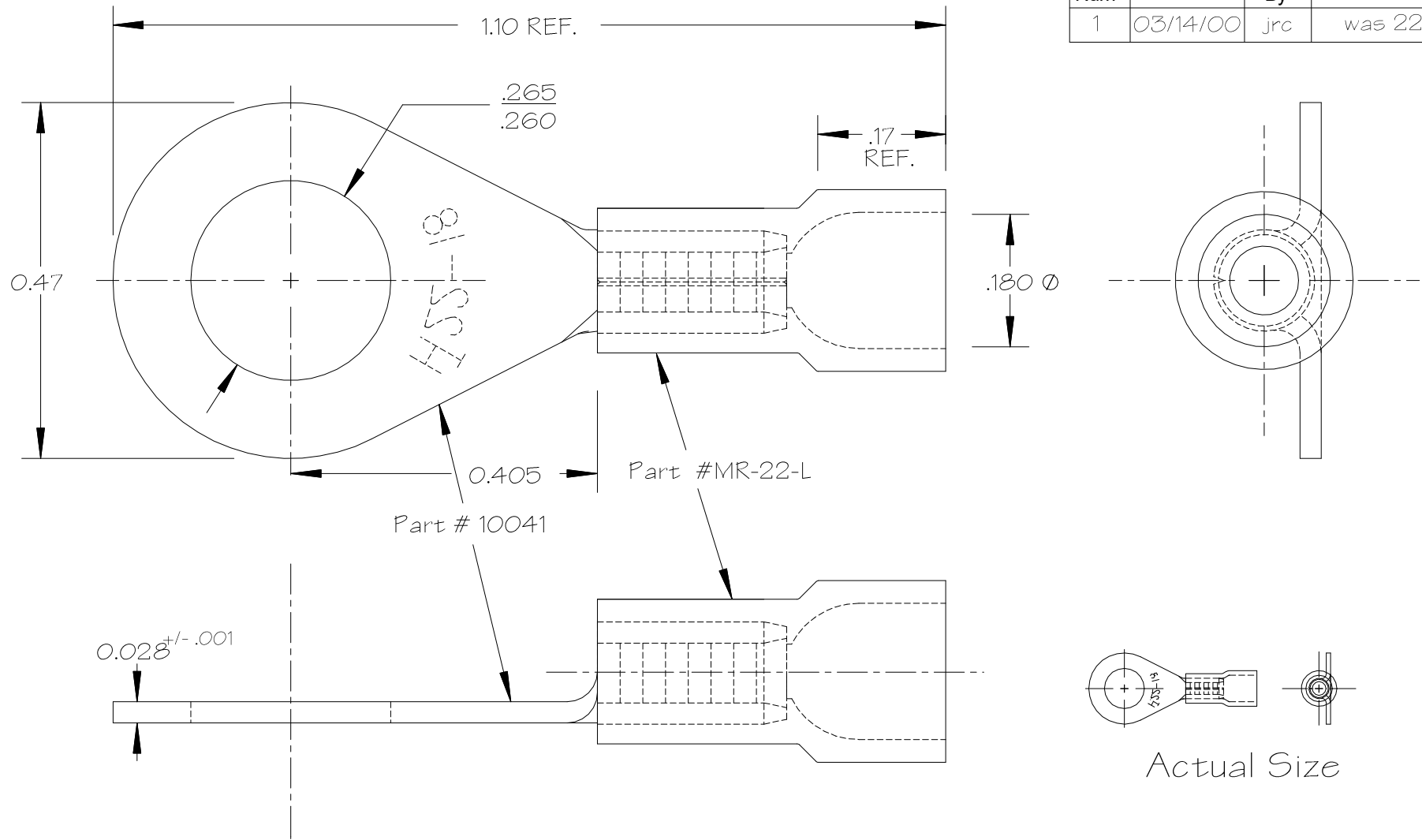


Num	Date	By	Revision Note
1	03/14/00	jrc	was 22-16



Terminal Notes:

1. Material: ETP Alloy 110 Copper 1/2 Hard Temper
ASTM Spec B152
2. Heat Treat: Anneal to Soft Temper
3. Finish: Flash Electro Tin Plate ASTM Spec B545
Mil Spec: Mil-T-10727C Type I .0001-.00025 Thick

Insulator Notes:

1. Material: Rigid PVC
2. Color: Red

NOTES

1. DO NOT SCALE PRINT.
2. BREAK ALL NON-CUTTING EDGES.
3. STAMP OR ETCH HTT,
DET NO., MAT'L. & HEAT TREAT
4. GRIND AS SHOWN.

TOLERANCES UNLESS OTHERWISE SPECIFIED		HT Hillsdale Terminal 250 Industrial Drive 2222 W. Moore Rd. Hillsdale, Michigan 49242	
XXX	+/- .010	Title Molded Vinyl Insulated 22-18 1/4" Stud Ring	
XX	+/- .020	DRAWN BY	DATE
X	+/- .030	J. Condon	10/13/96
FRACTIONS +/- 1/32		CHECKED BY	SCALE
ANGLES +/- 0°30'			5X
DIE NUMBER	D-2	CAD DRAWING #	
SHEET SIZE	A	MATERIAL	See Notes
		50041	