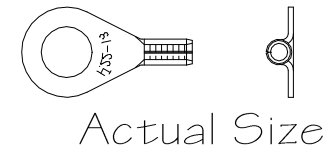
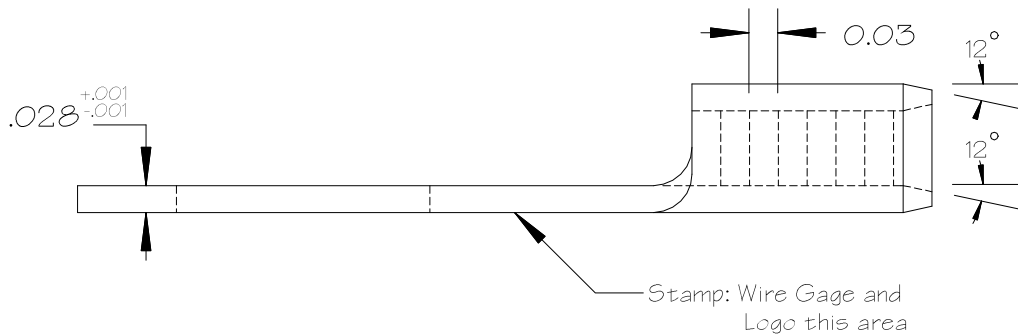
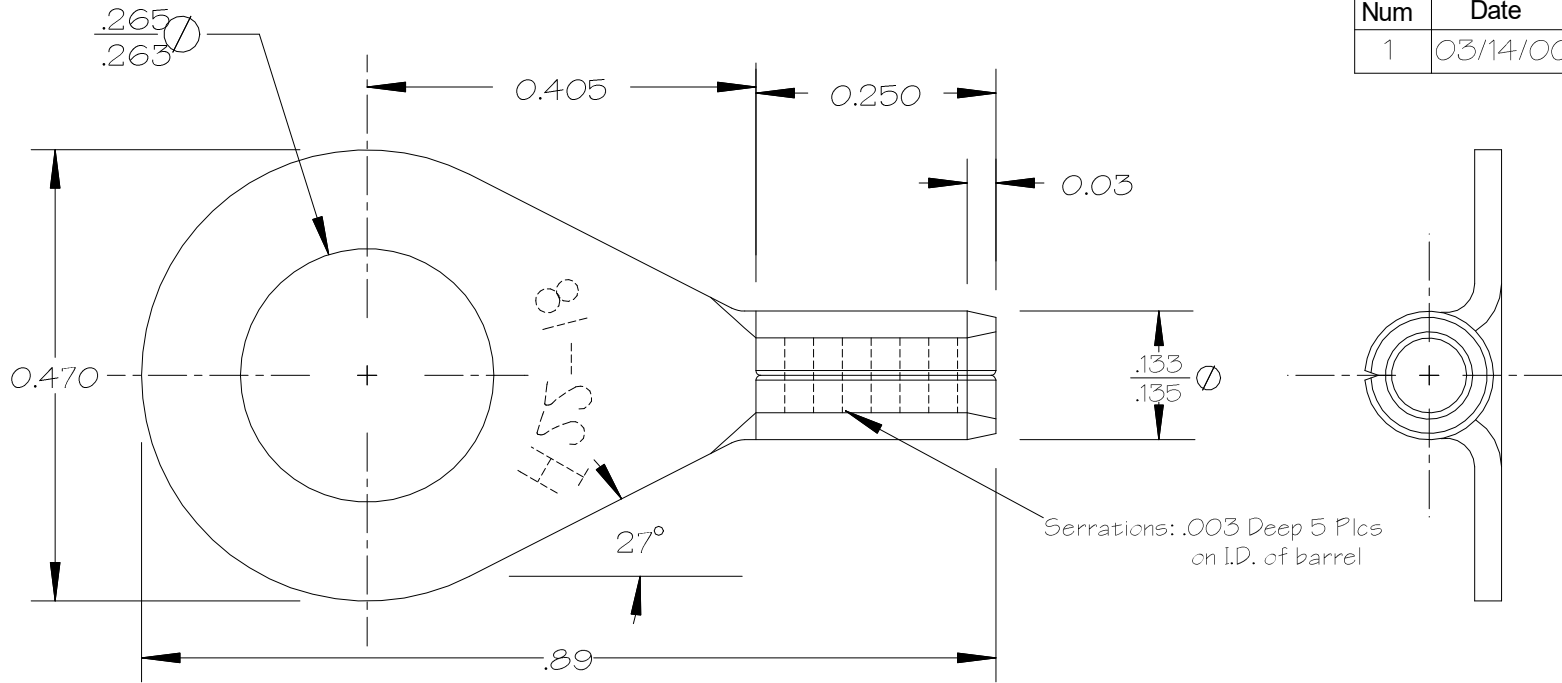


Num	Date	By	Revision Note
1	03/14/00	jrc	was 22-16



Notes:

1. Material: ETP Alloy 110 Copper 1/2 Hard Temper  
ASTM Spec B152
2. Heat Treat: Anneal to Soft Temper
3. Finish: Flash Electro Tin Plate  
ASTM Spec B545  
Mil Spec: Mil-T-10727C Type I  
.0001-.00025 Thick

- NOTES
1. DO NOT SCALE PRINT.
  2. BREAK ALL NON-CUTTING EDGES.
  3. STAMP OR ETCH HTT,  
DET NO., MAT'L, & HEAT TREAT
  4. GRIND AS SHOWN.

<b>TOLERANCES</b>		<b>Hillsdale Terminal</b>		250 Industrial Drive 2222 W. Moore Rd. Hillsdale, Michigan 49242	
UNLESS OTHERWISE SPECIFIED		Title Uninsulated			
XXX	+/- .010	22-18 GA. 1/4" Stud Ring			
XX	+/- .020	DRAWN BY J. Condon		DATE 03/31/94	
X	+/- .030	CHECKED BY		SCALE 5X	
FRACTIONS	+/- 1/32	DIE NUMBER D-2		CAD DRAWING #	
ANGLES	+/- 0°30'	SHEET SIZE A		MATERIAL See Notes	
				10041	