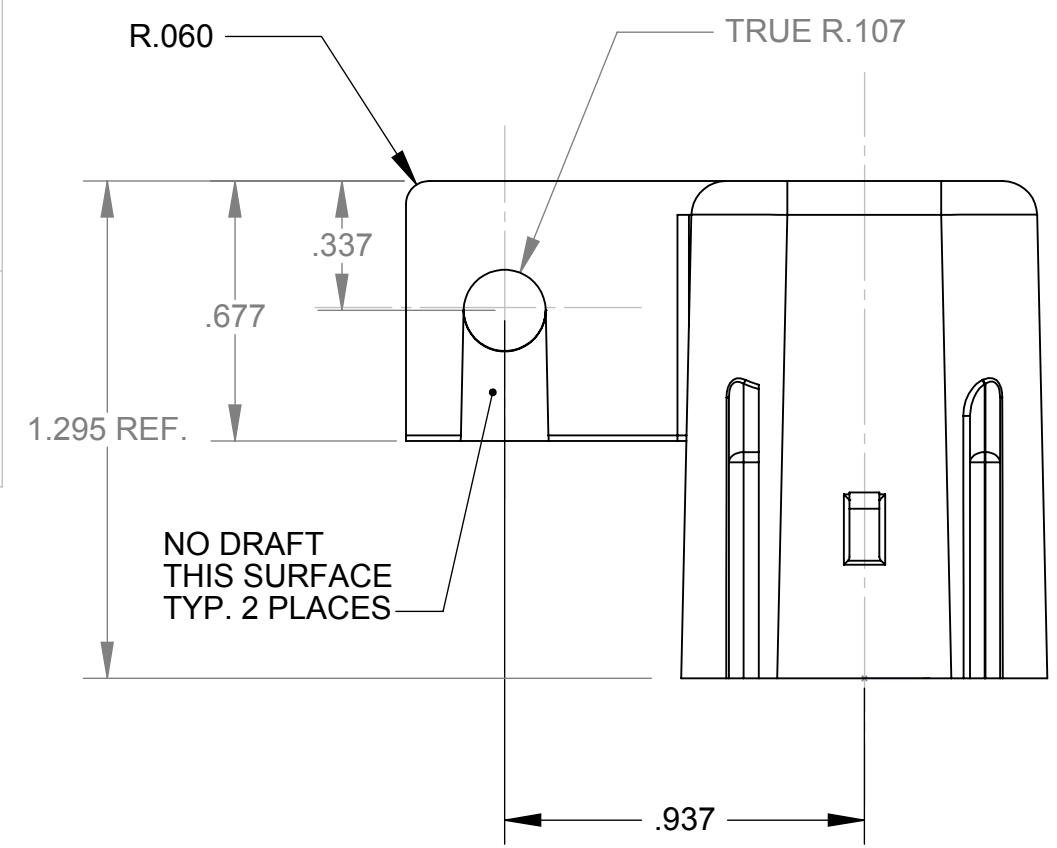
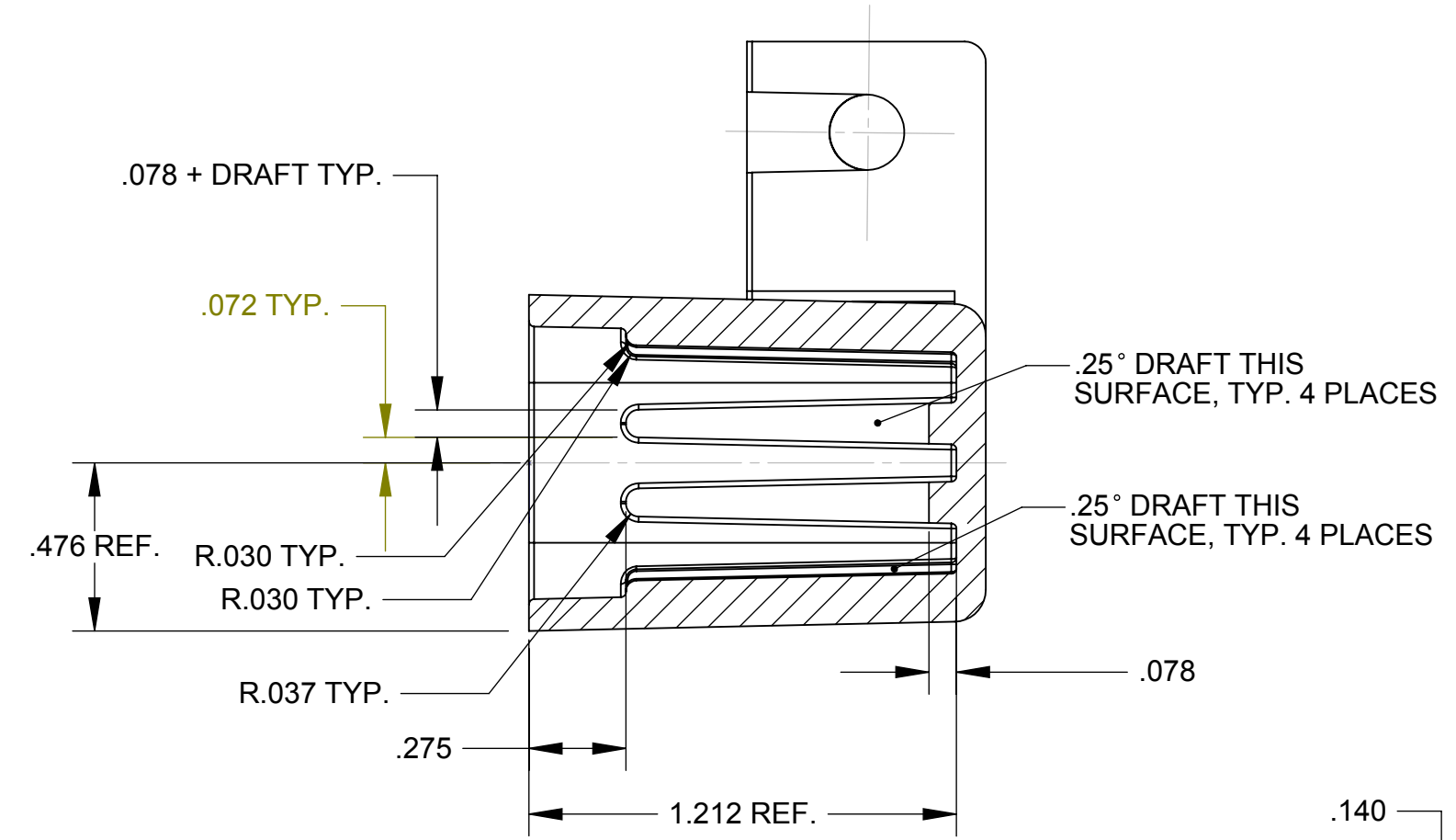


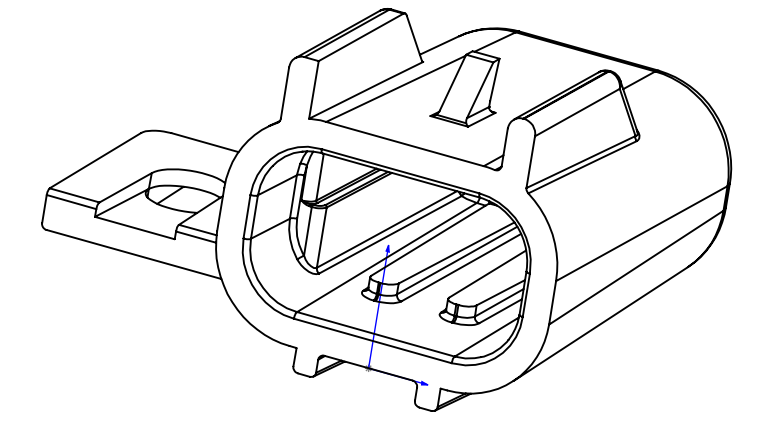
REV.	DESCRIPTION	REVISIONS	DATE	APPROVED
A	Drawing Creation		6/27/00	RB
B	Updated dimensions to match PPAP		10/3/13	MForbes



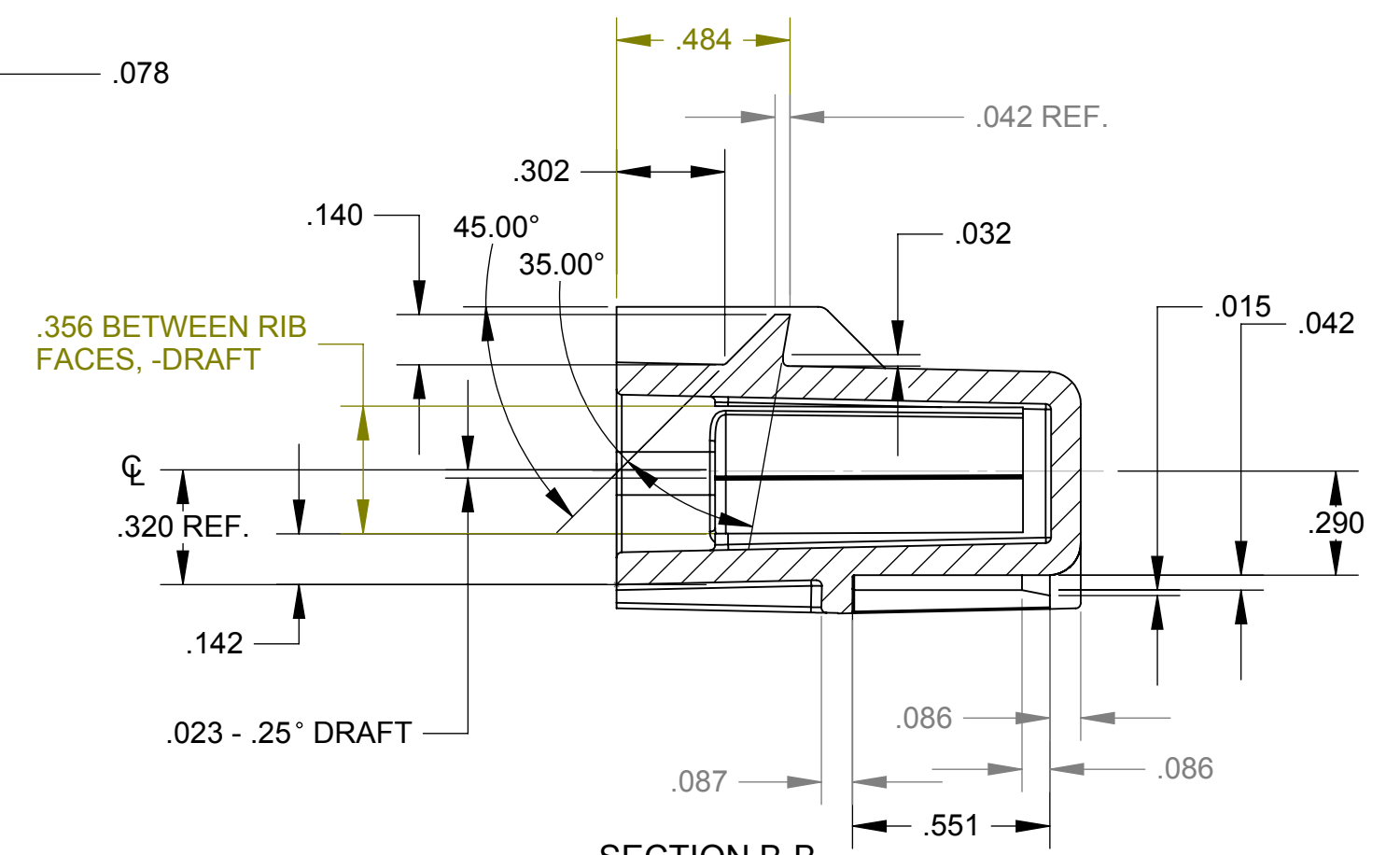
TOP VIEW



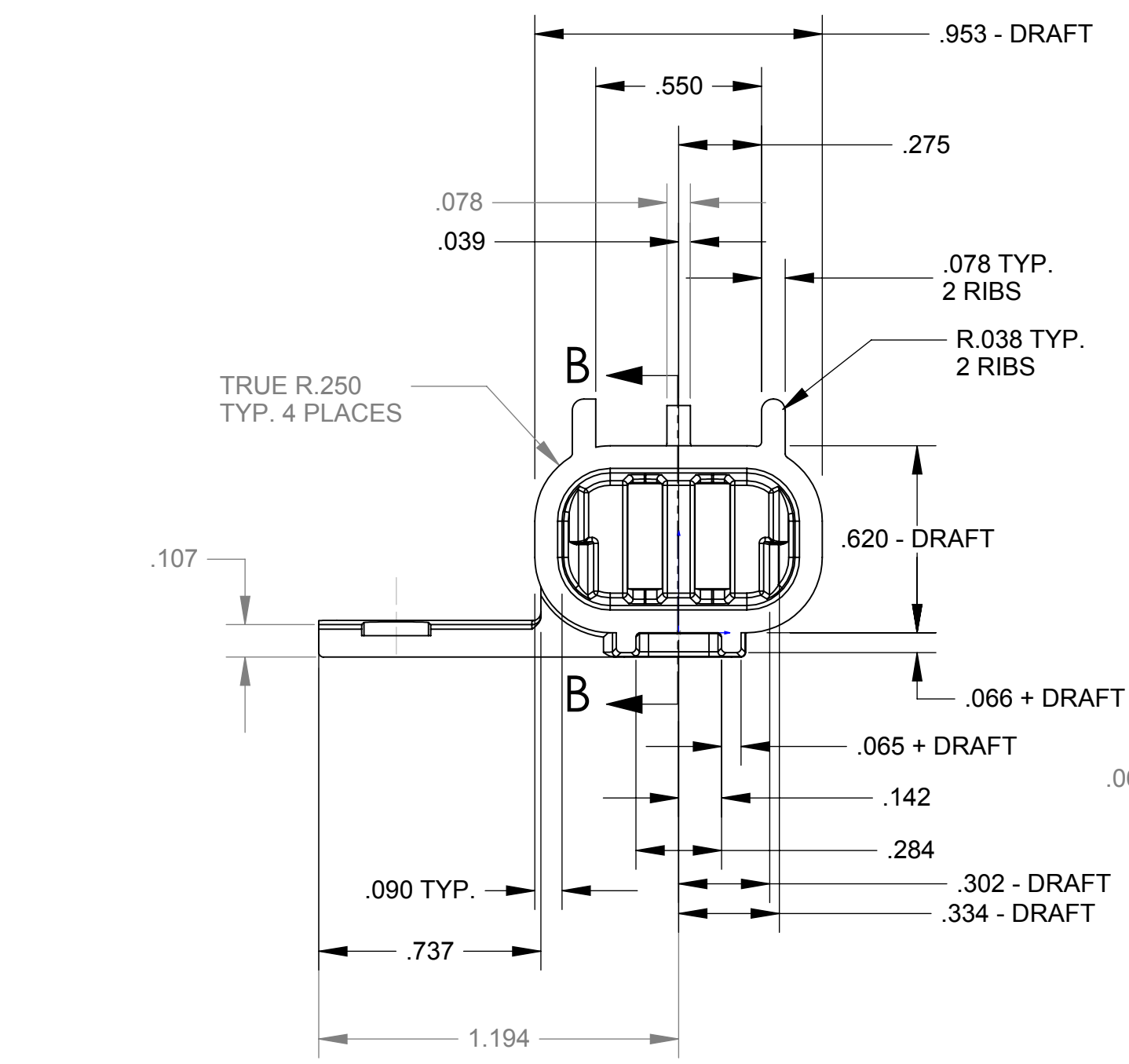
SECTION A-A



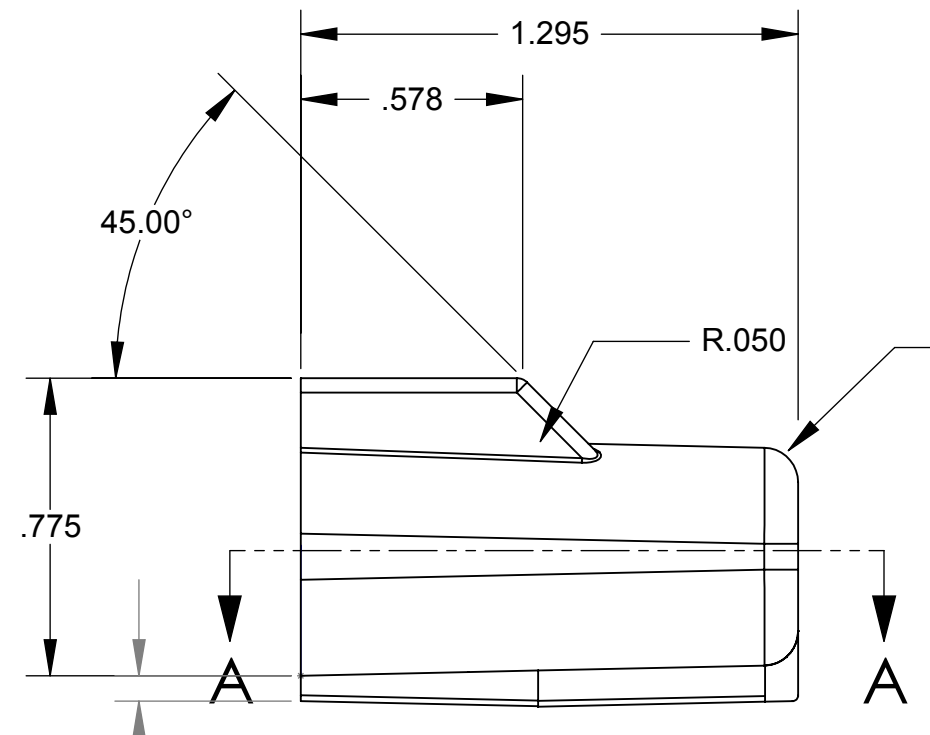
PERSPECTIVE VIEW



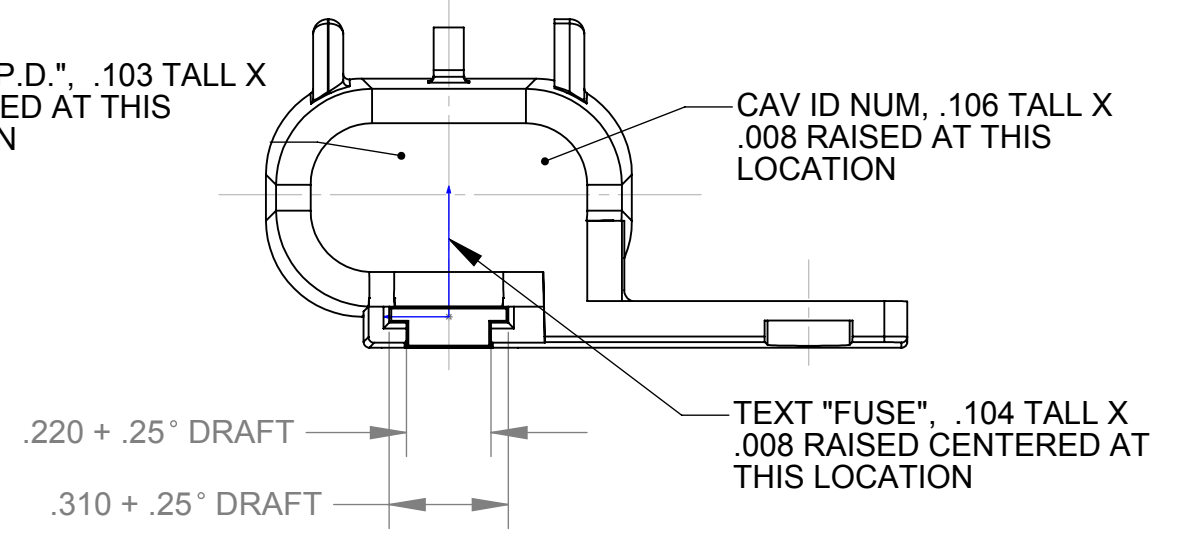
SECTION B-B



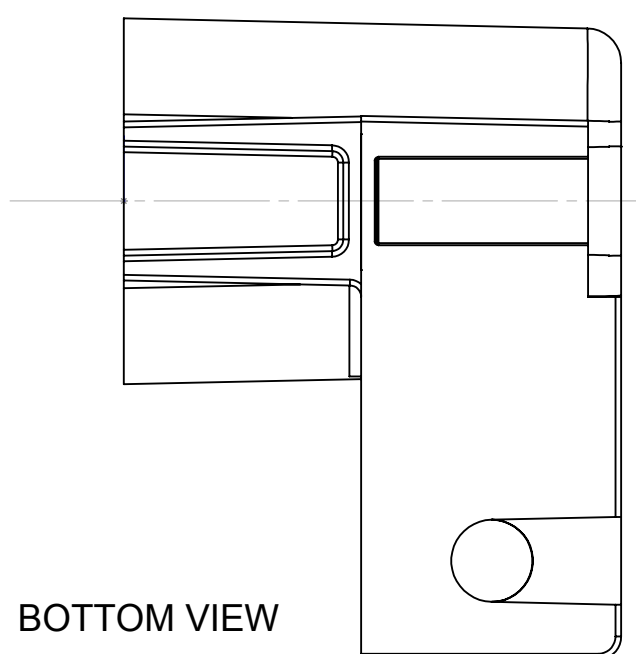
FRONT VIEW



SIDE VIEW



REAR VIEW



BOTTOM VIEW

- NOTES:
1. MATERIAL: NYLON 6/6, HEAT STABILIZED, BLACK COLOR.
  2. DRAFT: 1.25° UNLESS OTHERWISE SPECIFIED.
  3. BREAK ALL SHARP CORNERS R .015 UNLESS OTHERWISE SPECIFIED OR PROHIBITED BY MOLD DESIGN.
  4. ALL EJECTOR PIN MARKS TO BE FLUSH TO .005" DEPRESSED.
  5. ALL HIDDEN LINES OMITTED FOR VIEW CLARITY.
  6. PART VOLUME: .458 CUBIC INCHES

ITEM NO.	PART OR IDENTIFYING NO.	NOMENCLATURE OR DESCRIPTION	MATERIAL SPECIFICATION	QTY REQD
PARTS LIST				
UNLESS OTHERWISE SPECIFIED DIMENSIONS ARE IN INCHES		CAD GENERATED DRAWING, DO NOT MANUALLY UPDATE		
TOLERANCES ARE:		JR GREENLEAF		
FRACTIONS	DECIMALS	ANGLES	APPROVALS	DATE
+	.XX+ .XX + 1	XXX ±.005	DRAWN	RB 6/27/00
MATERIAL		CHECKED		
FINISH		RESP ENG		
NEXT ASSY		MFG ENG		
USED ON		QUAL ENG		
APPLICATION		DO NOT SCALE DRAWING		
SCALE		DWG. NO. 10011		REV. B
SCALE 2X		CAD FILE:		SHEET 1 OF 1