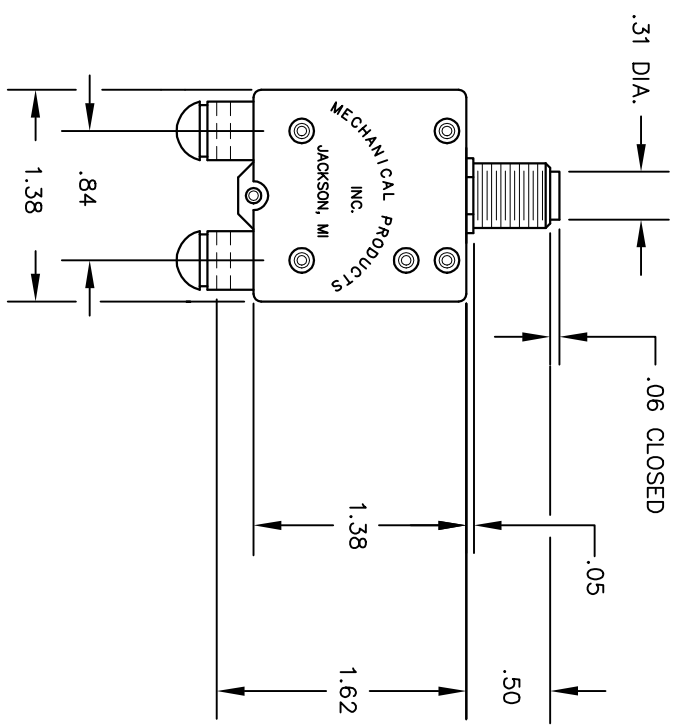
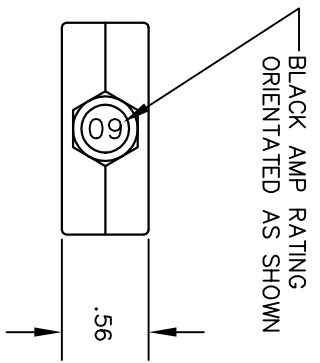
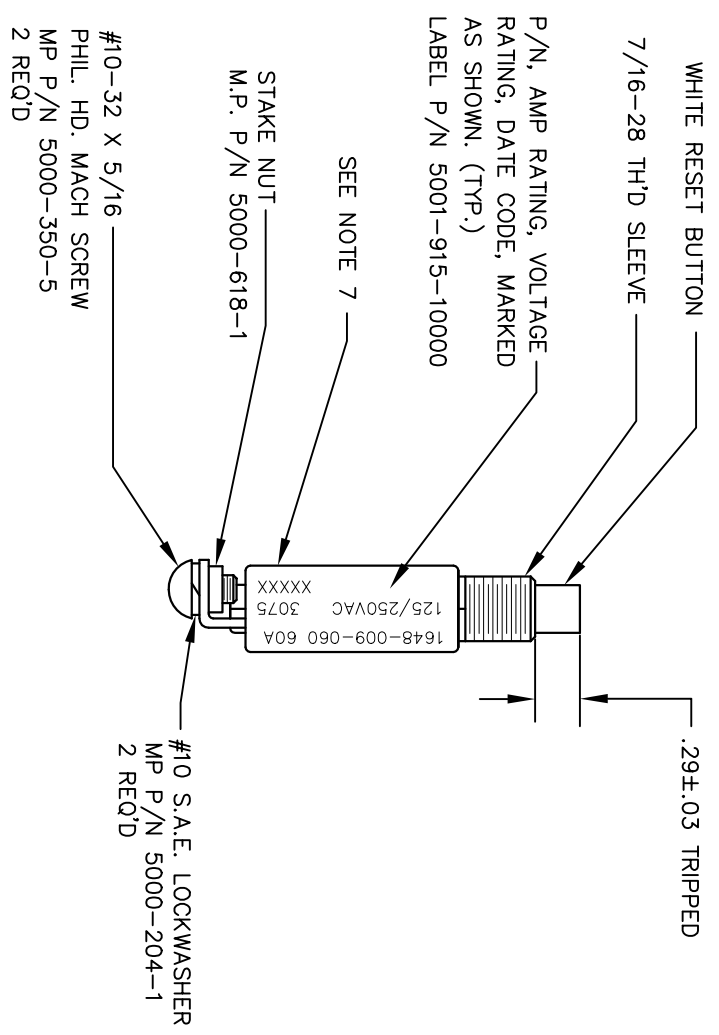


NOTES:

1. FOR AVAILABLE AMP RATINGS SEE D/N 1648-801.
2. FOR AVAILABLE MOUNTING HARDWARE SEE D/N 1600-800.
3. WIRE GAUGE TO BE IN ACCORDANCE WITH NATIONAL ELECTRICAL CODE STANDARDS.
4. FOR CALIBRATION DATA SEE D/N 1648-701.
5. FOR VARIATION CHART SEE D/N 1648-802.
6. AT 77±3°F A MIN. PROTECTOR SHALL NOT TRIP ON LESS THAN RATED CURRENT. A MAX PROTECTOR SHALL TRIP ON 140% OF RATED CURRENT WITHIN ONE HOUR.
7. FOR PLANT DATA SEE D/N 1600-808.



REVISION		LTR	DESCRIPTION	EON	DATE	APPROVED
J	REDRAWN W/O CHANGE			12059	3/16/10	JA

MECHANICAL PROPERTIES		UNLESS OTHERWISE SPECIFIED DIMENSIONS ARE IN INCHES TOLERANCES ON		DFTL. MHB		MECHANICAL PRODUCTS, INC. JACKSON MICHIGAN U. S. A. 49204	
YP		XX ±	.02	CHECK	10/31/06	MANUAL RESET CIRCUIT PROTECTOR EXP. NO. 1648-009	
TS		XXX ±		PROJ. ENG. JA	3/16/10		
EL 2		ANGLES	±	DIR. OF ENG.			
RA		MATERIAL		MFG.			
BH				D.C.			
RH				SEE EON FOR ABOVE SIGNATURES		SCALE	B
				APPLICATION		FULL	76374
						WEIGHT	
						SHEET	1 OF 1