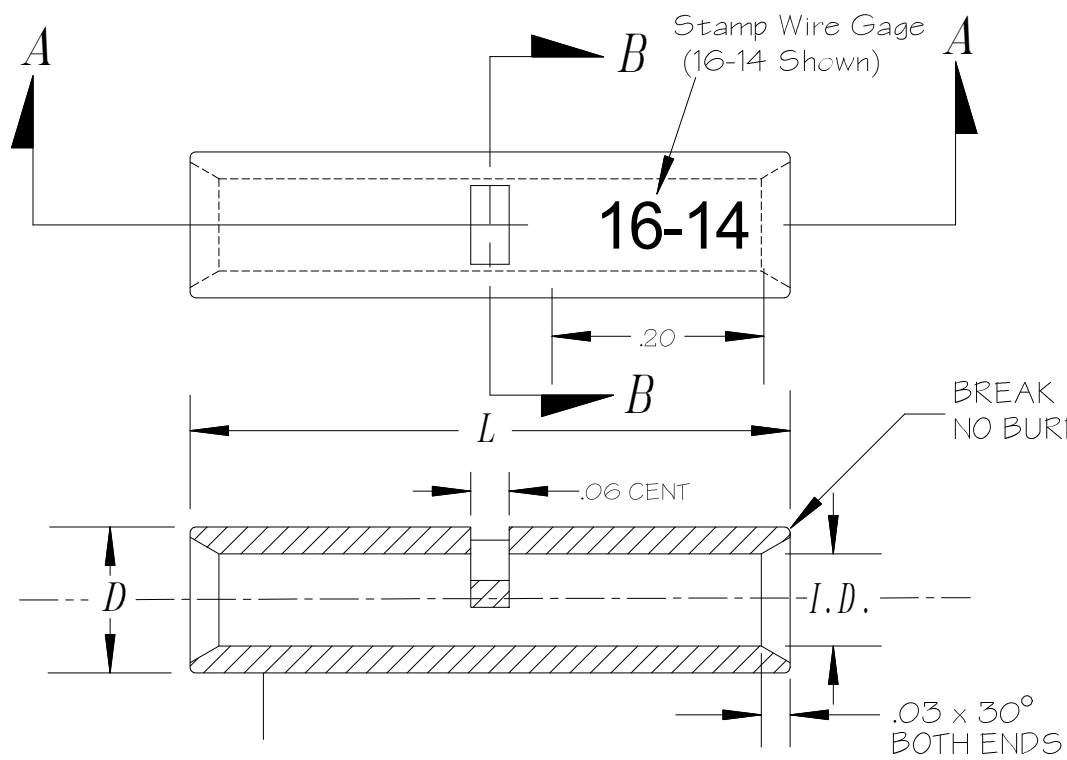
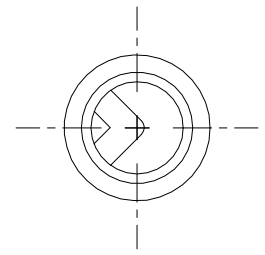


| Num | Date | By | Revision Note |
|-----|-------|-----|--|
| 1 | 09/15 | jrc | was .156 x .097 x .66 per Revision BCR-3 |



SECTION A-A



SECTION B-B

BRIGHT ANNEAL TO SOFT TEMPER
FINISH TO BE FLASH ELECTRO TIN PLATE
Alternate Material: Alloy C1020

- NOTES
- DO NOT SCALE PRINT.
 - BREAK ALL NON-CUTTING EDGES.
 - STAMP OR ETCH HTT, DET NO., MAT'L, & HEAT TREAT
 - GRIND AS SHOWN.

| PART# | WIRE GAGE | D (mm) | I.D. (mm) | L (mm) | S ^{MAX} |
|-----------|-----------|--------------|--------------|---------------|------------------|
| 10083 | 22-18 | .135 (3.43) | .072 (1.83) | .565 (14.35) | .03 |
| 10083-L | 22-18 | .125 (3.17) | .062 (1.57) | .625 (15.87) | .03 |
| 10173 | 16-14 | .158 (4.00) | .097 (2.46) | .565 (14.35) | .04 |
| ① 10173-L | 16-14 | .153 (3.9) | .091 (2.3) | .630 (16) | .04 |
| 10173-XL | 16-14 | .153 (3.9) | .091 (2.3) | .665 (16.9) | .04 |
| 10313 | 12-10 | .218 (5.44) | .142 (3.61) | .585 (14.86) | .06 |
| 10313-L | 12-10 | .218 (5.44) | .142 (3.61) | .810 (20.57) | .06 |
| 10624 | 8 | .276 (7.00) | .177 (4.50) | .827 (21.00) | .10 |
| 10625 | 6 | .354 (9.00) | .252 (6.40) | 1.083 (27.50) | .10 |
| 10626 | 4 | .449 (11.4) | .325 (8.25) | 1.20 (30.50) | .18 |
| 10627 | 2 | .522 (13.25) | .403 (10.25) | 1.320 (33.50) | .18 |

| | | | |
|---|----------------------------------|--------------------------|--|
| TOLERANCES UNLESS OTHERWISE SPECIFIED .XXX +/- .0005 .XX +/- .001 .X +/- .005 | Hilldale Terminal | | 250 Industrial Drive 2222 W. Moore Rd. Hillsdale, Michigan 49242 |
| | Title SEAMLESS BUTT CONNECTOR | | |
| FRACTIONS +/- 1/32 ANGLES +/- 0'30" | DRAWN BY J. Condon | DATE 11/09/96 | |
| DIE NUMBER | CHECKED BY | SCALE | |
| SHEET SIZE A | MATERIAL Alloy C110 | CAD DRAWING # Smlsbut | |