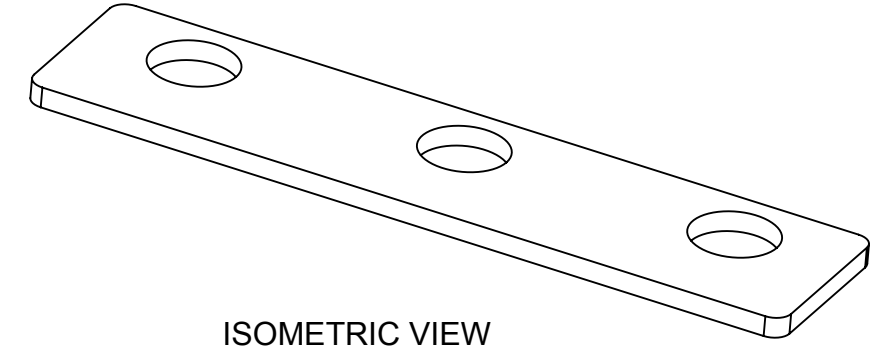
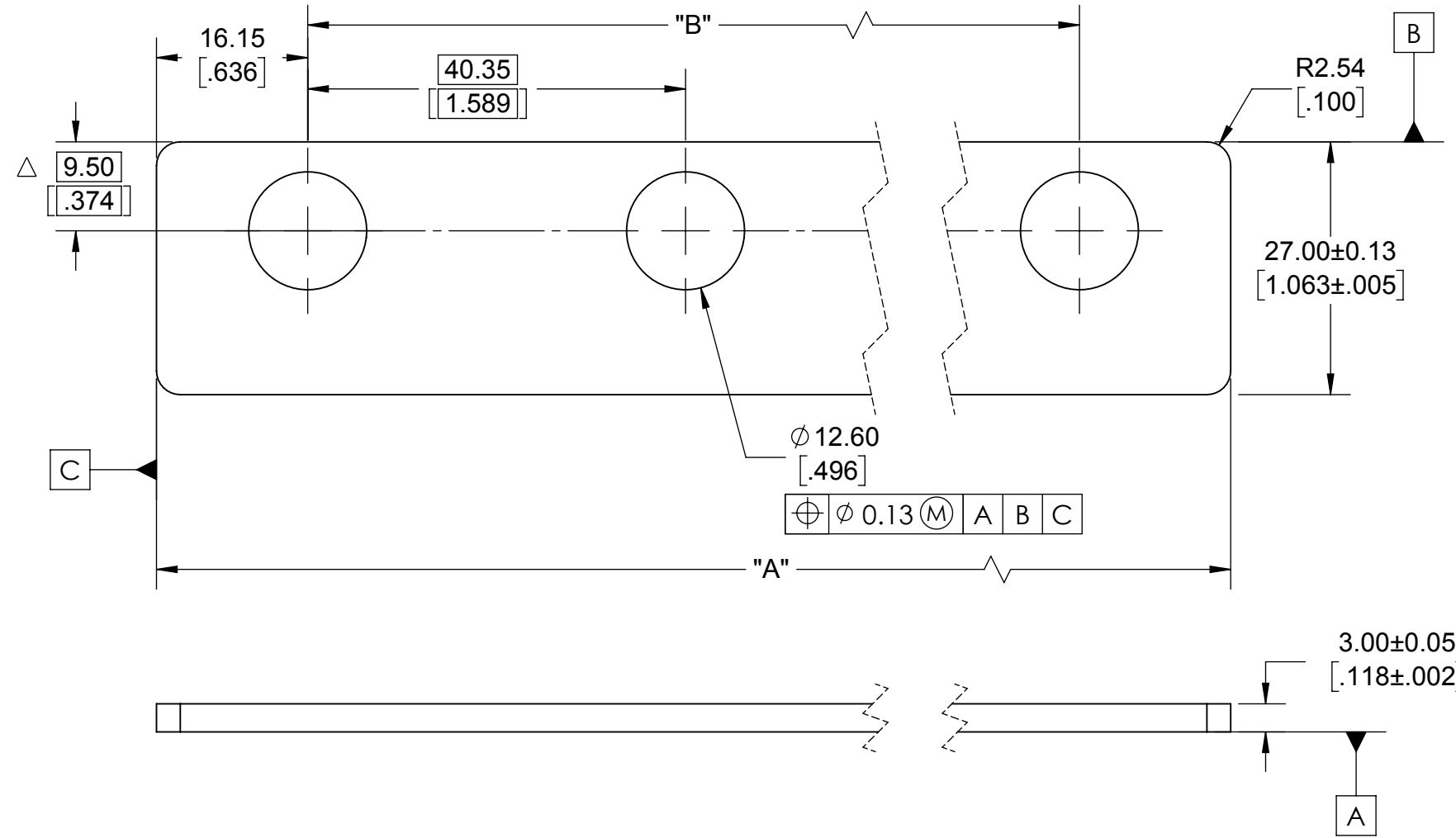


**EATON CORPORATION - CONFIDENTIAL AND PROPRIETARY**  
 NOTICE TO PERSONS RECEIVING THIS DOCUMENT AND/OR TECHNICAL INFORMATION  
 THIS DOCUMENT, INCLUDING THE DRAWING AND INFORMATION CONTAINED THEREON, IS CONFIDENTIAL AND IS THE EXCLUSIVE PROPERTY OF EATON CORPORATION, AND IS MERELY ON LOAN AND SUBJECT TO RECALL BY EATON AT ANY TIME, BY TAKING POSSESSION OF THIS DOCUMENT. THE RECIPIENT ACKNOWLEDGES AND AGREES THAT THIS DOCUMENT CANNOT BE USED IN ANY MANNER ADVERSE TO THE INTERESTS OF EATON AND THAT NO PORTION OF THIS DOCUMENT MAY BE COPIED OR OTHERWISE REPRODUCED WITHOUT THE PRIOR WRITTEN CONSENT OF EATON. IN THE CASE OF CONFLICTING CONTRACTUAL PROVISIONS, THIS NOTICE SHALL GOVERN THE STATUS OF THIS DOCUMENT.  
 ©2016 Eaton Corporation, All Rights Reserved.

REVISIONS				
REV.	DESCRIPTION	ECO	DATE	BY
A	PRODUCTION RELEASE	144998	5/8/2019	AG



P/N	No of Holes	"A ± 0.5 "	"B"
SP500859-2	2	72.65	40.35
SP500859-3	3	113	80.7
SP500859-4	4	153.35	121.05
SP500859-5	5	193.7	161.4
SP500859-6	6	234.05	201.75
SP500859-7	7	274.4	242.1

- NOTES:
1. MATERIAL: HALF HARD, COPPER 110.
  2. FINISH: TIN POST PLATING : 0.006 ± 0.001mm
  3. 0.08mm[0.003"] MAX. BURR ALLOWABLE UNLESS OTHERWISE SPECIFIED.
  4. PART SHOULD BE FREE OF OIL, GREASE AND OTHER FOREIGN MATERIAL.
  5. ALL "B" DIMENSIONS ARE BASIC.

<p>CPCD - TRANSPORTATION TUALATIN, OR</p>	<p><b>UNLESS OTHERWISE SPECIFIED DIMENSIONS IN</b>                  INCHES (MILLIMETERS)</p> <p>X.X ±0.1 X ±3                  X.XX ±0.02 X.X ±0.5                  X.XXX ±0.005 X.XX ±0.13</p> <p>X° ±1                  X.X° ±0.5</p>	<p>○ CAPSULE AROUND DIMENSION INDICATES INCOMING INSPECTION REQUIRED</p> <p>△ INDICATES CRITICAL CHARACTERISTIC (MUST MEET CPK REQUIREMENTS)</p>	<p><b>DRAWING IN ACCORDANCE WITH</b>                  ASME Y14.100 - 2013                  ASME Y14.1M - 2012                  STANDARDS COMPLIANCE</p>	<p><b>ENG/MFG REFERENCE</b>                  MATERIAL: SEE NOTES                  FINISH: SEE NOTES                  RELATED DOCUMENT: LMG-X-X-X-XXXXXXX,                  MBF-X-X-X-XXXXXXX,                  MFH-X-X-X-XXXXXXX</p>	<p><b>DRAFTER/DESIGNER</b> A M GHOLAVE</p>	<p><b>DATE (YYYY/MM/DD)</b> 2017/09/29</p>	<p><b>TITLE</b> BUS BAR, MODULAR FUSE HOLDER</p>			
					<p><b>ENGINEERING APPROVED</b> DAVID SWENSON</p>	<p><b>MANUFACTURING</b> N/A</p>	<p><b>SIZE</b> B</p>	<p><b>DRAWING NUMBER</b> SP500859-X</p>	<p><b>REVISION</b> A</p>	
					<p><b>CHANGE RESPONSIBILITY</b> TUALATIN</p>	<p><b>ECO No</b> ECO-144998</p>	<p><b>THIRD ANGLE PROJECTION</b></p>	<p><b>PLANT CODE</b></p>	<p><b>CLASS CODE</b> N/A</p>	<p><b>SCALE</b> 3:2</p>