

August 17, 2015

«Customer_Name»
«Street_Name»
«Location», «Region_State_Province_County» «Postal_Code»

Product Change Notification Letter

Dear Valued Customer,

Our records indicate that we currently supply you Eaton's product or product family listed below. This letter is to inform you that we are implementing a change to the product and/or related processes as described in this communication. Please review this letter to ensure that your products and/or processes will not be affected by the proposed change. If additional information or documentation from us is required, please respond to CommercialVehicleInsideSales@eaton.com.

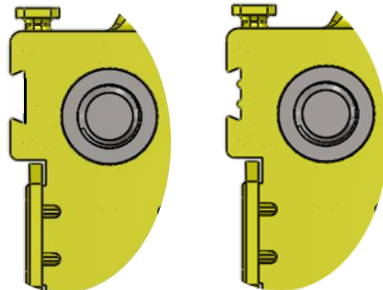
Eaton Part Number/Part Name: LMIXXX / LMI (Configurative AMI fuse holder system)

Reason:

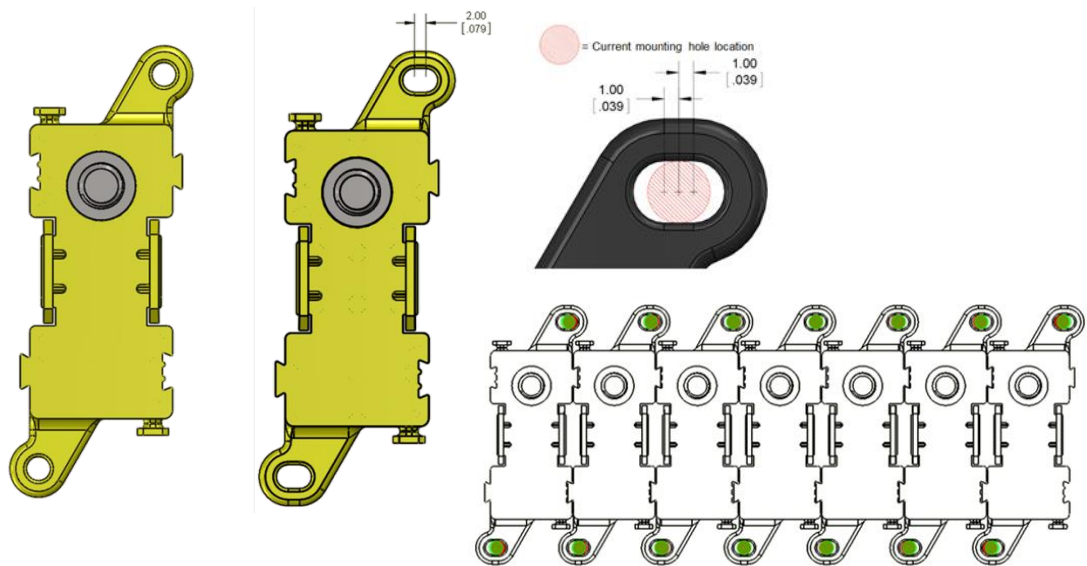
The plastic resin material used in construction of the black bases for the fuse holder was discontinued by the supplier. The recommended replacement compound has a different shrinkage characteristic and affects the manufacturability of LMI holder and its interlocking system.

To correct this shrinkage issue the product will be changed in two stages:

1. Addition of crush rib features within the interlocking system to allow connected modules to remain in place. These crush ribs will add 0.2mm to the width of each module. Those 0.2mm are added each time another module is attached to the assembly. Thus total distance added will depend upon the number of modules assembled together.



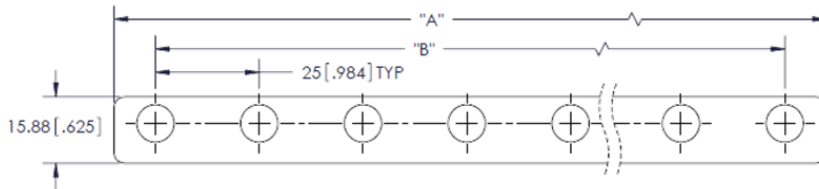
2. Elongation of holes at module mounting points so that the 0.2mm that the crush ribs add to each module will still allow existing mounting holes on the mating structure to be used.



In addition to the changes on the LMI modules described above we will make changes to the bus bars used to create the linked assemblies LMI2, 3, 4, 5, 6 & 7.

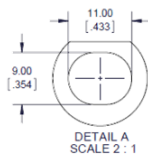
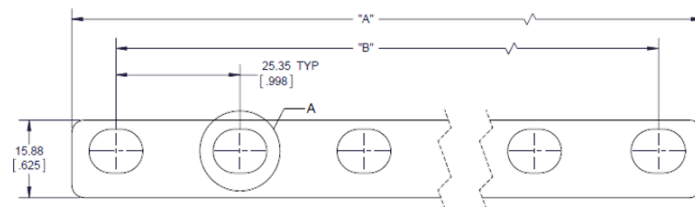
1. The bus bar holes have also been elongated to allow for additional flexibility between the old mounting dimensions and the new. The bus bar changes below have negligible effect on the current carrying capabilities of the bus bar.

Existing Version:



P/N	Hole Qty.	Hole Size	A	B	PLATING
B109-7046-2	2	Ø9	45	25	PRE-PLATED
B109-7046-3	3	Ø9	70	50	PRE-PLATED
B109-7046-4	4	Ø9	95	75	POST-PLATED
B109-7046-5	5	Ø9	120	100	PRE-PLATED
B109-7046-6	6	Ø9	145	125	PRE-PLATED
B109-7046-7	7	Ø9	170	150	PRE-PLATED

New Version:



P/N	HOLE QTY.	A	B	PLATING
B109-7046-2	2	45.0	25.35	PRE-PLATED, BRIGHT
B109-7046-3	3	70.0	50.70	PRE-PLATED, BRIGHT
B109-7046-4	4	95.0	76.05	POST-PLATED, MATTE
B109-7046-5	5	120.0	101.40	PRE-PLATED, BRIGHT
B109-7046-6	6	145.0	126.75	PRE-PLATED, BRIGHT
B109-7046-7	7	170.0	152.10	PRE-PLATED, BRIGHT

Please see affected LMI module part numbers on the following page. Affected bus bar part numbers are in the table above.

In the interim the product will be provided with the new bus bars shown above but with the LMI modules reworked to remove the crush ribs. By doing this we allow both old and new mounting dimensions to be attainable with the same components.

Long term solution will be to marry the crush ribs described in Stage 1 together with the bus bar changes of stage 2. The flexibility in the mounting hole shape and the bus bar hole shape will allow all customers to continue with their designs as they are.

Best Regards,



Jeff Fetters
 Product Manager – Vehicle Power Distribution & Circuit Protection
 Commercial Vehicle Group
 Eaton
jeffTfetters@eaton.com

Affected Part Numbers:

LMI1-E-0-0	LMI2-M-2-01	LMI3-M-2-J1I	LMI5-M-2-GG1LI-AG
LMI1-M-0-0	LMI2-M-2-10	LMI3-M-2-N1H-C	LMI5-M-2-HN1HD-C
LMI1-M-1-0	LMI2-M-2-AB	LMI4-E-2-0010	LMI5-M-2-IL1GG
LMI-E	LMI3-E-2-001	LMI4-E-2-0100	LMI5-M-2-JG1LI-AG
LMI-I-E	LMI3-E-2-010	LMI4-E-2-1BBB	LMI5-M-2-JG1LL-AG
LMI1-E-0-1	LMI3-E-2-100	LMI4-M-2-0010	LMI6-E-2-000100
LMI1-E-1-0	LMI3-E-2-H1H	LMI4-M-2-0100	LMI6-E-2-001000
LMI1-E-1-0-P	LMI3-M-2-001	LMI4-M-2-0100-N	LMI6-M-2-000100
LMI1-E-1-1	LMI3-M-2-010	LMI4-M-2-1BDD	LMI6-M-2-001000
LMI1-E-2-B	LMI3-M-2-100	LMI4-M-2-2122-N	LMI6-M-2-CCC1CH
LMI1-E-2-C	LMI3-M-2-B1B	LMI4-M-2-HH1A-C	LMI6-M-2-GG1GGG
LMI1-E-2-G	LMI3-M-2-C1C	LMI4-M-2-L1HI	LMI6-M-2-GGG1GG
LMI1-E-2-H	LMI3-M-2-C1H-CAT	LMI5-E-2-00100	LMI6-M-2-GGG1GG-U
LMI1-M-0-1	LMI3-M-2-D1J	LMI5-E-2-JJ1J0	LMI7-E-2-0001000
LMI1-M-1-1	LMI3-M-2-D1L	LMI5-E-2-KK1KL	LMI7-M-2-0001000
LMI1-M-2-G	LMI3-M-2-H1H-CAT	LMI5-M-2-00100	LMI7-M-2-AAL1GG0
LMI2-E-2-01	LMI3-M-2-H1N-C	LMI5-M-2-00100-C	LMI7-M-2-CCC1CHH
LMI2-E-2-10	LMI3-M-2-I1J	LMI5-M-2-DH1HN-C	LMI7-M-2-LGG1GGG