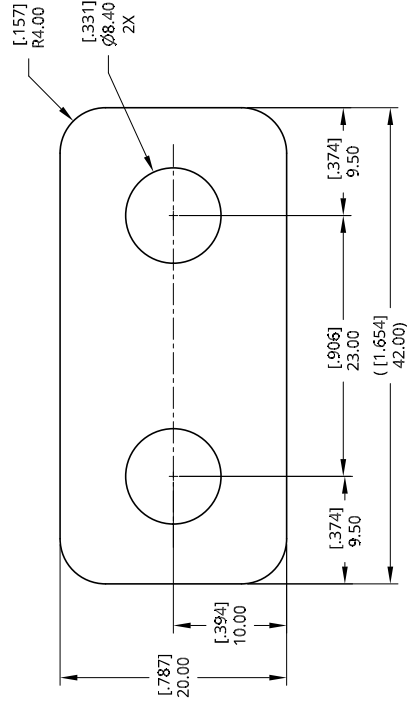
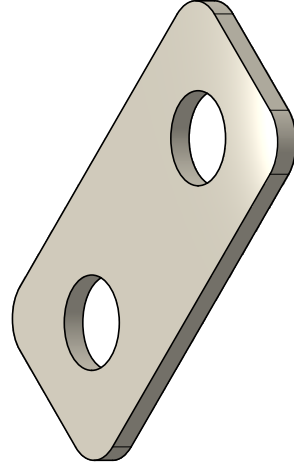


4 3 2 1

D C B A



REVISIONS				
ZONE	REV.	DESCRIPTION	DATE	APPROVED

NOTES:  
 1. MATERIAL: COPPER CDA 110  
 2. PLATING: TIN PLATE PER MIL-T-10727, MATTE

UNLESS OTHERWISE SPECIFIED, DIMENSIONS ARE IN MILLIMETERS XX = ±1.0 XXI = ±0.0 FRACTIONAL =	DATE	9/27/08	EGIS MOBILE ELECTRIC Egis Mobile Electric 3135 Mercer Ave. Ste 102 Bellingham, WA 98225, USA
	NAME	John Neffner	
DRAWN	CHECKED	APPROVED	TITLE
SURFACE FINISH			SIZE
DO NOT SCALE DRAWING			901262
BREAK ALL SHARP EDGES AND REMOVE BURRS			NTS
THIRD ANGLE PROJECTION			SHEET
THIS DRAWING AND THE INFORMATION CONTAINED HEREIN IS THE PROPERTY OF EGIS MOBILE ELECTRIC. COPIES OR DISSEMINATION WITHOUT THE WRITTEN PERMISSION OF EGIS MOBILE ELECTRIC.			1 of 1

4 3 2 1