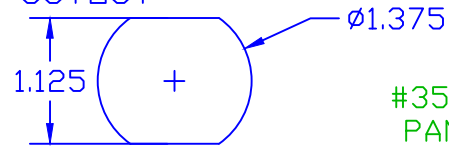
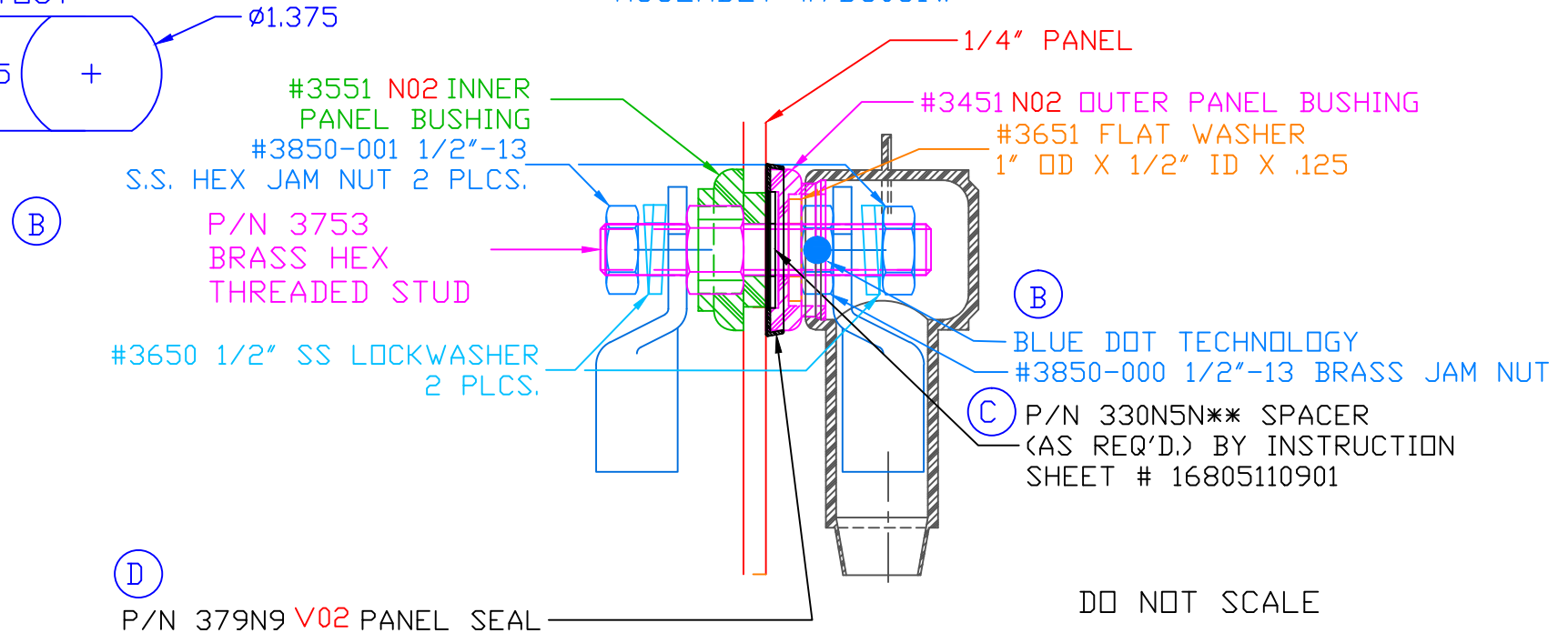


LTR.	REVISIONS	DATE
A	ADDED #3652 AND #3653	24JAN03
B	3850-000 WAS 3850, 3850-001 ADDED 2 PLCS.	02MAR
C	ADDED CALLOUT FOR SPACER AND INSTRUCTION SHEET	01MAY07
D	ADDED CALLOUT FOR P/N 379 PANEL SEAL	13FEB08
E	REVISED TORQUE RECOMMENDATIONS	08JUN10

USE GREENLEE
PUNCH ASSEMBLY
#60098 FOR PANEL
CUTOUT



ASSEMBLY #7B5051W



DO NOT SCALE

INCLUDES P-16808110001 BLUE DOT MULTI LABEL, 1 PER CONTAINER

MAXIMUM AMPERAGE: 500 AMPS @ 12VDC

(E) MAXIMUM RECOMMENDED FASTENER TORQUE:
BRASS JAM NUT: 240 IN./LBS.
S.S. JAM NUT: 180 IN./LBS.

GLASS-REINFORCED NYLON

INCLUDES: 232E4V02 WEATHERPROOFING TERMINAL COVER

BASE MATERIAL:

BASE MATERIAL U.L. RATING: 94 HB

ITEMS SHOWN FOR ILLUSTRATIVE
PURPOSE, NOT INCLUDED:

4/0 GA. TERMINAL LUGS (2 PLACES)

TOLERANCE UNLESS OTHERWISE SPECIFIED: ±.030"/±0.8mm
RADIAL DIAMETERS TO BE MEASURED OVER MANDRELS,
RING GAGES OR PIN GAGES OF SUITABLE SIZE

REF:	DATE:	DRN BY:	BRH	WEIGHT:
***	02JAN03	CHK'D BY:	BRH	***
TITLE: POWER BUSHING 1/2" STUD 1/4" MAX PANEL WEATHERPROOF				SCALE:
MATERIAL:			PART NO.	
COLOR: RED	DRG CLASS	***		