

Applications:

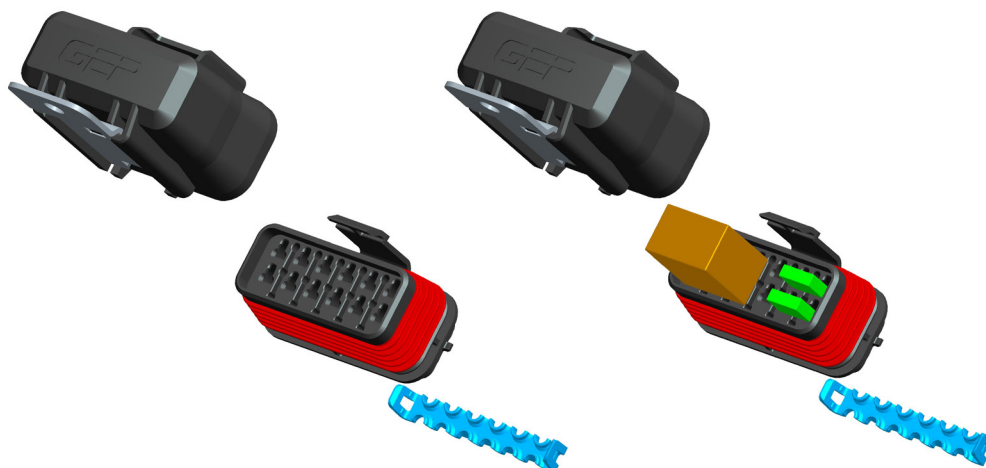
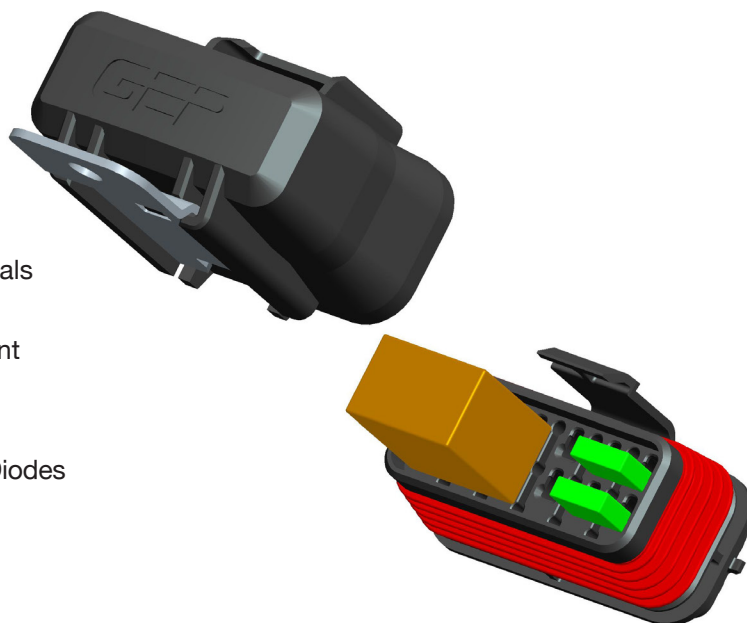
- Rugged and Harsh Environment Power Distribution
- Auxiliary and “Add-on” Requirements
- Minimized Packaging Requirements
- Off Road
- Lawn and Garden
- Small Vehicle
- Automotive

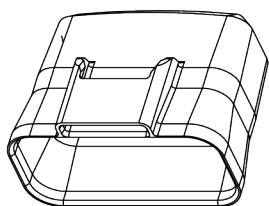
Specifications:

- Materials:
 - Housing and cover – thermoplastic
 - Seal – silicone
- Terminals: Delphi Metri-Pack® 280 series terminals
- Temperature Rating: -40 to 125 C Ambient
- Terminal Rating: 20A Continuous, 30A Intermittent

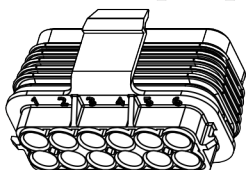
Features:

- Accepts Mini Fuses, Micro 280 Relays and Mini Diodes
 - Up to 6 mini fuses or Diodes
 - Up to 3 ultra micro relays
 - Combine mini fuses, diodes and micro relays
- Mounting options
 - Two cover side mount options
 - Three bracket mount options (stainless steel)
- Additional options available-
 - Terminal Lock (TPA)
 - Cover Lock (CPA)
 - Diode keys
 - Cable seals and plugs
- RoHS compliant

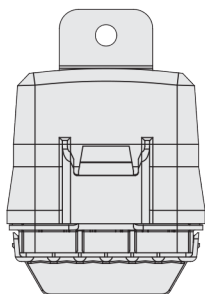




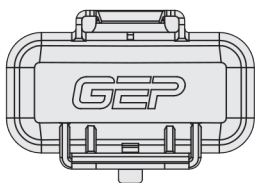
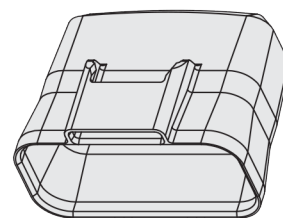
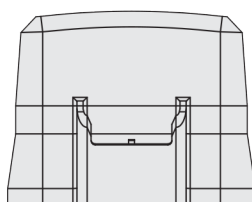
FRH-A12-C



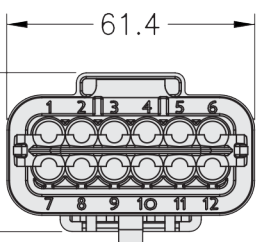
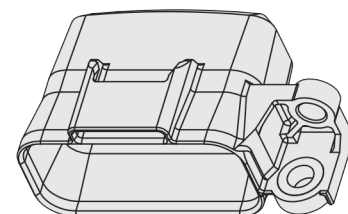
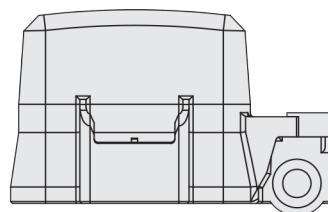
FRH-A12



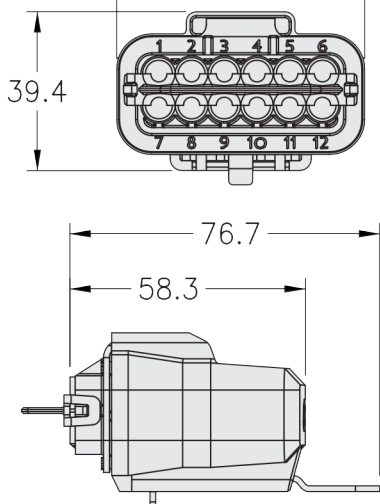
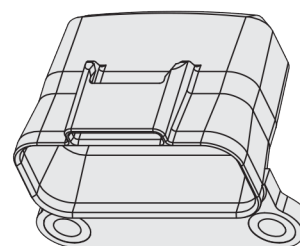
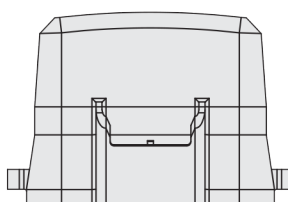
FRH-A12-C
Cover
(Bracketed)



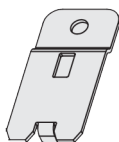
FRH-A12-CB-1
Cover
(Side mount-single)



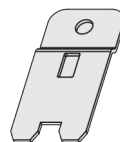
FRH-A12-CD-1
Cover
(Side mount-double)



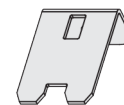
Bracket Options:



FLAT WITH ANTI-ROTATION
FRH-A12-MB-A1: ZINC STEEL
FRH-A12-MB-A2: STAINLESS 304



FLAT WITHOUT ANTI-ROTATION
FRH-A12-MB-B1: ZINC STEEL
FRH-A12-MB-B2: STAINLESS 304



90° BENT
FRH-A12-MB-C1: ZINC STEEL
FRH-A12-MB-C2: STAINLESS 304



FRH-A12-T
TPA



PDM-TK
Diode key