

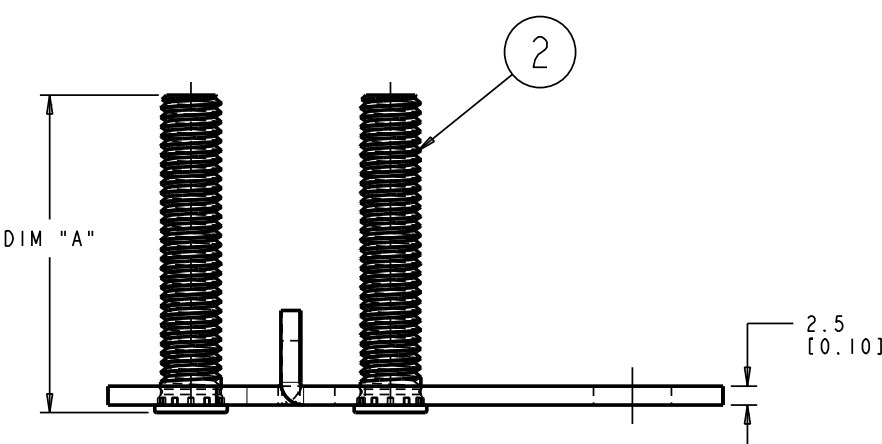
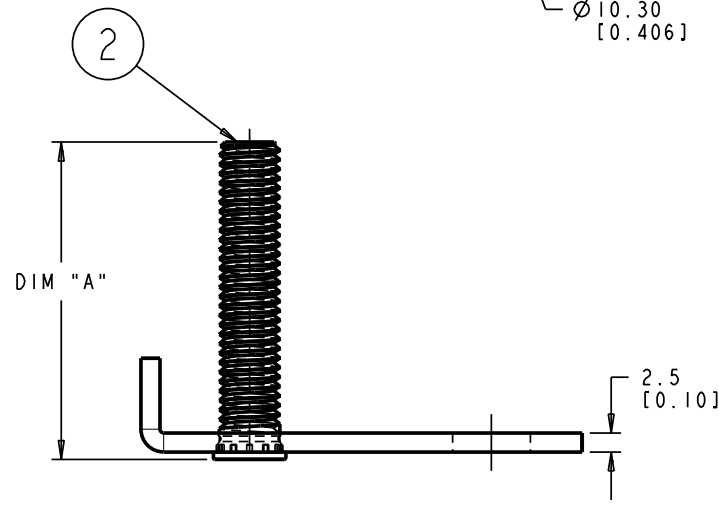
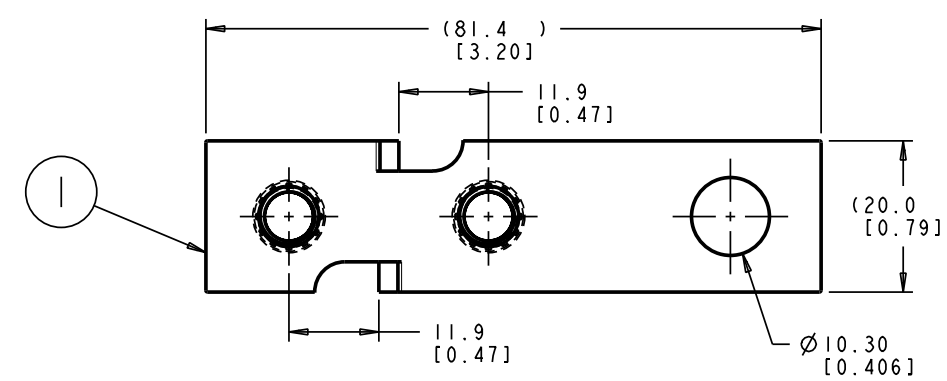
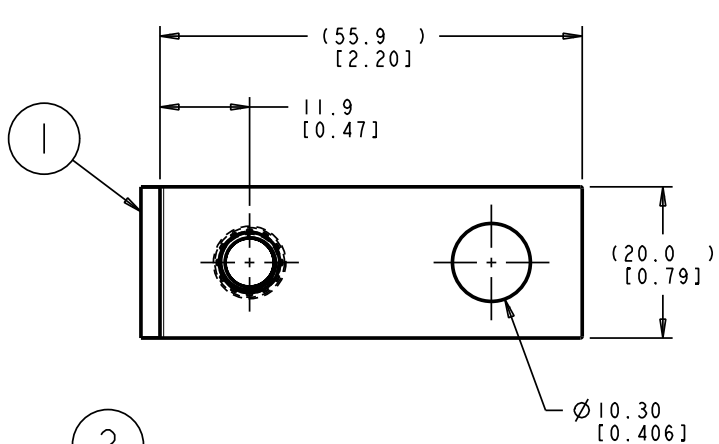
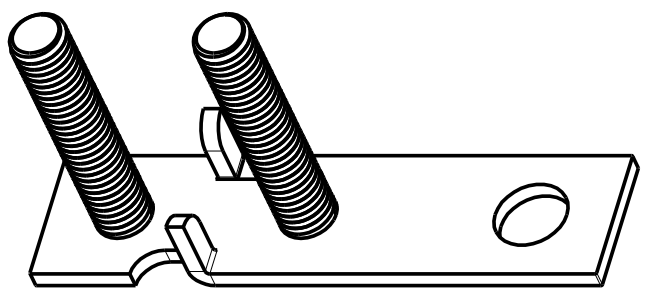
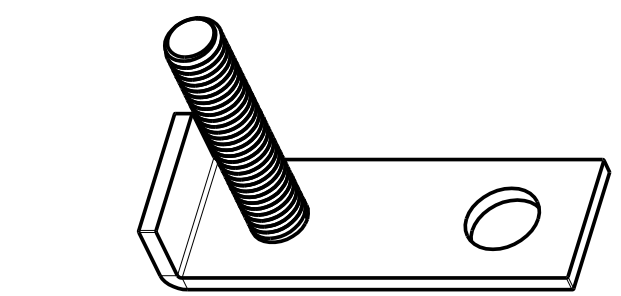
**CONFIDENTIAL -**

The Information contained in this document is the property of Cooper Industries, Inc. It is not for public disclosure. Possession of the Information does not convey any right to loan, sell, or disclose the Information. Unauthorized reproduction or use of the Information is Prohibited. This document is to be returned to Cooper Industries, Inc. upon completion of the purpose for which it is loaned or upon request.

**COPYRIGHT -** Cooper Industries, Inc.

This is an unpublished work. The disclosure of this work is limited to select personnel. Further dissemination or disclosure to the public is PROHIBITED. This unpublished work is protected by Federal Copyright Law and all rights thereunder are reserved by Cooper Industries, Inc.

REV	DESCRIPTION	DATE	APPR
1	INCREASED STUDS LENGTH ANOTHER 4.0MM; DIMS. 42.0 WAS 38.0 FOR 250 & M8 STUDS. INCREASED 4.0MM OF LENGTH TO BUSBAR; DIMS. 55.9 WAS 51.9 AND 81.4 WAS 77.4. ADDED COLUMN DIM "A" TO TABLE. ECN-U07002 CTH	12-08 2006	
2	M8 WAS M8X. ECN-BU-U07191 A.L	08-17 2007	AL
3	ADDED "J" TO DISTRIBUTION LIST ECN: BU-J08223 CTH	04-10 2008	CTH
4	DIMENSION 11.9 WAS 12.0 BU-U08192 JGU	06-24 2008	CTH
5	ADDED MOUNTING HOLE DIM Ø10.3(0.41) BU-U09179 A.L	10-27 2009	AL
6	ADDED REFERENCE MARK TO DIM20.0,55.9 (C5) DIM 81.4(C4), 20.0(C3), REMOVED "56" FROM DISTRIBUTION LIST. ECN #BU-U10105	05-20 2010	
7	REMOVED CFBAR1-M10L & CFBAR2-M10L FROM TABLE AND PART NUMBER SCHEME. ECN: BU-U10212 CTH	12-09 2010	



CFBARX - XXXL  
 250 - 1-1/4-20 STUD  
 M8 - M8 STUD  
 1 - SINGLE STUD  
 2 - DOUBLE STUD

PART NUMBER			
ASSEMBLY PART NUMBER	DIM "A"	ITEM	QTY
CFBARI-250L (1-1/4-20 Stud Long)	42	1	1
		2	1
CFBAR2-250L (2-1/4-20 Studs Long)	42	1	1
		2	2
CFBARI-M8L (1-M8 Stud Long)	42	1	1
		2	1
CFBAR2-M8L (2-M8 Studs Long)	42	1	1
		2	2

NOTES:  
 1. MATERIAL:  
 BUSBAR - COPPER, TIN PLATE  
 STUD: STAINLESS STEEL  
 2. TORQUE RATING: MAXIMUM 12 N.m (106 IN.LB)

SINGLE STUD (CFBARI-XXXL)

DOUBLE STUD (CFBAR2-XXXL)



TOLERANCES UNLESS OTHERWISE SPECIFIED	
METRIC (mm)	ENGLISH (in)
1 PL DEC: ± .25	2 PL DEC: ± .01
2 PL DEC: ± .13	3 PL DEC: ± .005

THIRD ANGLE PROJECTION
ANGULAR TOL: ± 2° FRACTION TOL: ± 1/64 IN

Plant Code: J, U  
 Design Units: MM

For change history please consult the Bussmann Engineering Change Notice number listed below.  
 BU-U10212

Title: BATTERY FUSE BUS BAR ASSEMBLY  
 Sheet 1 of 1 Scale: 1.000 Revision: Version 7.1

Date: 05-25-06 Created By: CTH  
 Part Number: CFBARX-XXXL-SALES  
 Ref. Name: XP4001\_CFBARXX-XXXL-SALES