

DASH NO. RANGE	"D" DIA. RANGE	"E" DIMENSION	"R" RADIUS	"T" GAUGE
-4 THRU -16	1/4" TO 1"	"D"/2 + .514	.062	.031
-17 THRU -96	1-1/16" TO 6"	"D"/2 + .534	.109	.050

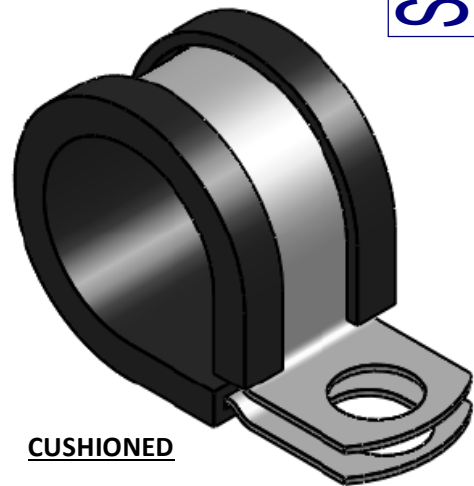
REV.	CHANGE	DATE	BY	CHK'D	APPR
T	SEE DRAWING CHANGE RECORD ON FILE.	02/18/16	HAD	SMJ	HAD

S340

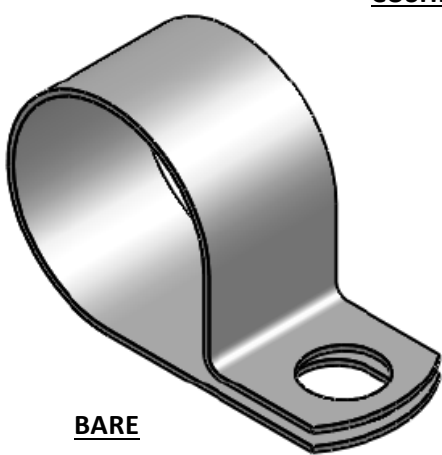
**MATERIAL & FINISH CODES:**

**METAL:** "NO CODE" 1008/1020 LOW CARBON STEEL PER ASTM A 1008, ASTM A 109, QQ-S-698  
 FINISH: ZINC PLATE GOLD PER ASTM B 633, Fe/Zn 8, TY. II  
 "P" 1008/1020 LOW CARBON STEEL PER ASTM A 1008, ASTM A 109, QQ-S-698  
 FINISH: ZINC PLATE GOLD PLUS SEALER PER ASTM B 633, Fe/Zn 13, TY. II  
 "D" 2024-T42 ALUMINUM ALLOY PER AMS-QQ-A-250/5  
 FINISH: NONE  
 "SS" 304/321 STAINLESS STEEL PER AMS 5513/AMS 5510  
 FINISH: NONE  
 "C" 316 STAINLESS STEEL PER AMS 5524  
 FINISH: NONE

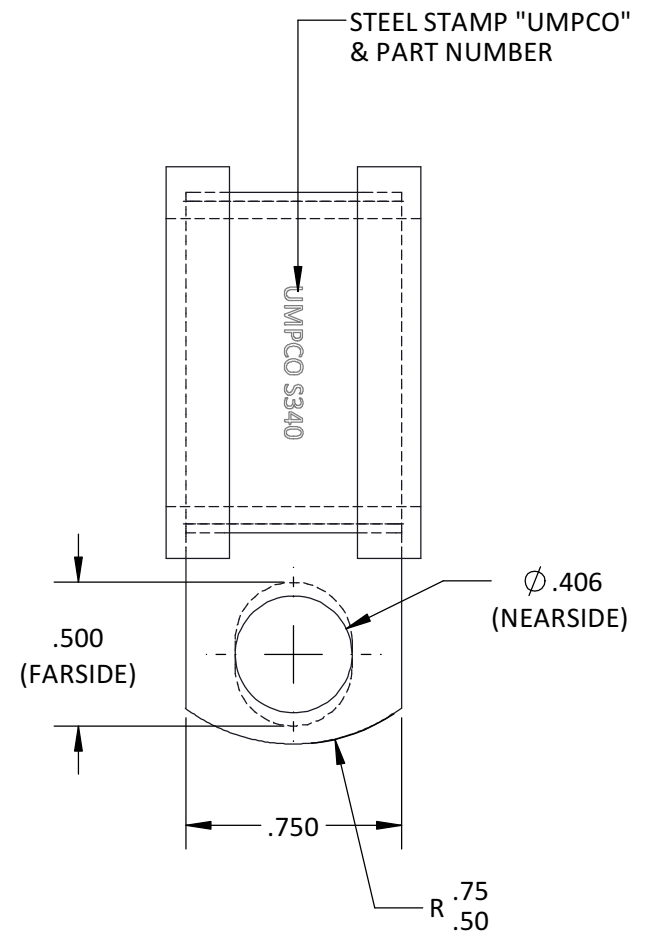
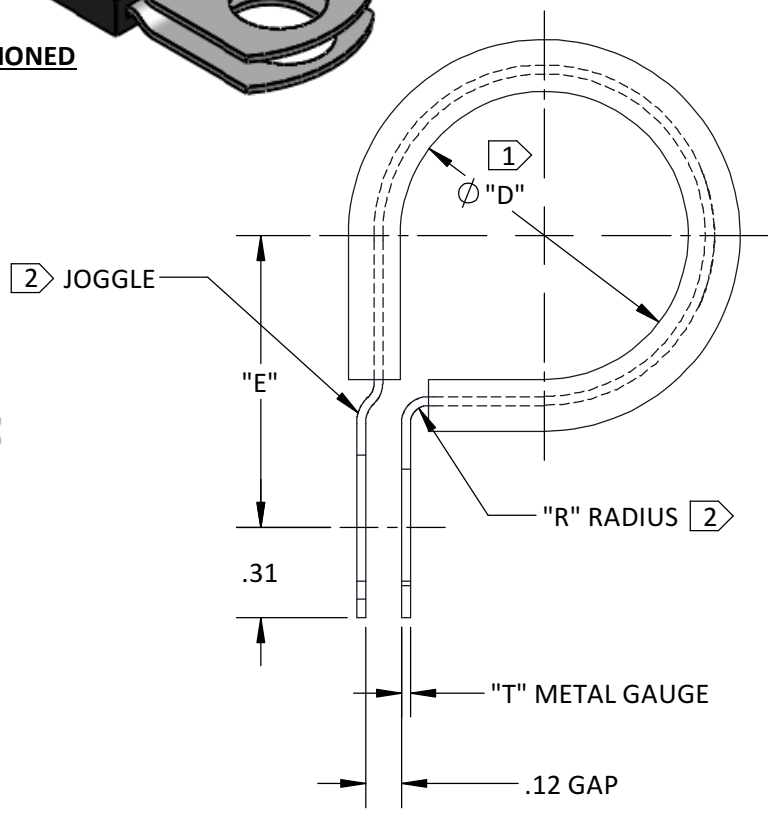
**CUSHION:** "G" GENERAL PURPOSE EPDM PER SAE J200 M3 BA 710 C12  
 COLOR: BLACK  
 "H" GENERAL PURPOSE SILICONE PER AMS 3303 WITH 100 LB/IN. MIN. TEAR  
 COLOR: RED/ORANGE  
 "N" GENERAL PURPOSE NEOPRENE PER AMS 3209  
 COLOR: BLACK  
 "T" TEFLON SKIVED PER AMS 3652  
 COLOR: WHITE  
 "B" BARE CLAMP



**CUSHIONED**



**BARE**



**EXAMPLE OF PART CALLOUT:**

1" DIA. REINFORCED ALUM. CLAMP W/EPDM CUSHION

S340 D G 16 R

- REINFORCED (OMIT WHEN NOT DESIRED) [2]
- DIA "D" IN 1/16" INCREMENTS [1]
- CUSHION CODE
- METAL CODE (OMIT FOR "NO CODE")
- BASIC DRAWING NUMBER

SHEET 1 OF 1

**NOTES:**

- [1] DIAMETER "D" REFERS TO METAL SURFACE WHEN BARE CLAMP IS REQUIRED.
- [2] REINFORCED CORNERS AND BEADED JOGGLE PER DS1010 WHEN SPECIFIED. BARE CLAMPS WILL NOT HAVE A JOGGLE.
- 3) CLAMPS FURNISHED IN THE NORMAL OPEN (SPRINGBACK) CONDITION.
- 4) INSPECT PER MIL-C-8603 CLOSURE TEST.

REFERENCES: -	-	-	-
LIMITS ON DIMENSIONS UNLESS OTHERWISE SPECIFIED:	ANGULAR: X ± 5°	 <b>UMPCO . INC.</b> 7100 LAMPSON AVE. P.O. BOX 5158 GARDEN GROVE, CA. 92846	FSCM/CAGE CODE No. 18076
	DECIMAL: .XX ± .03 .XXX ± .015		RJE KEL LJS
GENERAL MACHINE FINISHES EXCEPT AS NOTED:	PROPRIETARY AND CONFIDENTIAL THE INFORMATION CONTAINED IN THIS DRAWING IS THE SOLE PROPERTY OF UMPCO, INC. ANY REPRODUCTION IN PART OR AS A WHOLE WITHOUT THE WRITTEN PERMISSION OF UMPCO, INC IS PROHIBITED.		11/01/76 11/01/76 04/22/99
INTERPRET GEOMETRIC TOLERANCING PER: ASME-Y14.5M		CLAMP, LOOP-CUSHIONED	DRAWN CHECKED ENGR SCALE: NONE
REMOVE ALL BURRS AND BREAK SHARP EDGES .010 MAX	ACT. WGHT. -	PART AND/OR ASSEMBLY DESCRIPTION	SIZE <b>B</b>
	CALC. WGHT. -		<b>S340</b>
			PRINT NUMBER