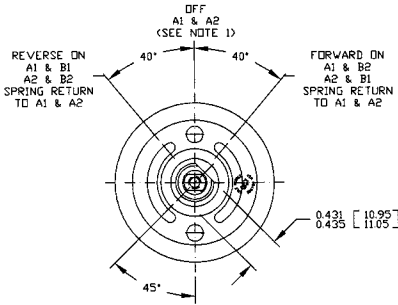
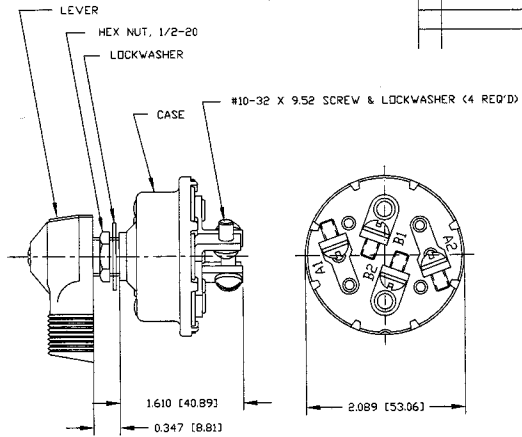


Revision Control Record			
Rev.	Description of Change	ECN No.	Date
B	ADDED CH LOGO	D1462	8/7/01



VIEW LESS LEVER & HARDWARE



- NOTES:
1. ALL STEEL PARTS PLATED
  2. ALL DIMENSIONS ARE REF. ONLY UNLESS NOTED OTHERWISE
  3. A1 & A2 CIRCUITS MUST BREAK BEFORE ANOTHER CIRCUIT MAKES
  4. SILVER LAMINATED CONTACT SURFACES
  5. ALL HARDWARE TO BE ASSEMBLED

**TOLERANCES** - Unless otherwise specifically called, the following are default tolerances:  
 \* Linear Dimensional Dimensional  $\pm .005$   
 \* Surface Dimensional Dimensional  $\pm .005$   
 \* Angular Dimensional  $\pm 1.5$  Deg  
 \* Metric: Refer to equivalent English Dimensional Tolerance  
 \*\*\* NOTE: All tolerances are  $\pm$  unless otherwise noted.  
**Dimensional Callouts** - All dimensions are expressed in inches unless those shown in brackets [ ] are expressed in millimeters.  
**3D MODEL** - An Autodesk PTC - Non-Toleranced Reference Dimension, shown for identification purposes only.  
 Used On: EX78712-02 REF Scale: 1:1  
 or Ref: 83270988

**RESPONSIBILITY ASSIGNMENT** - This Engineering Drawing, and the information contained herein, is proprietary to Cole Hersee Company and may not be disclosed, reproduced, or in any way used, in whole or in part, without the express written consent of an authorized representative of Cole Hersee Company.  
**DESIGN CONTROL** - It is the responsibility of the individual using this drawing to ensure that the final design meets and agrees with the version level of the Controlled Document (Master Drawing). This is a multi-controlled document when otherwise specified.  
 3D NOT SHOWN - Dimensional notation may occur during printing.  
 Drawn By: SAM Date: 6/22/99  
 Responsible: N/A

**Key for Special Characteristics:**  
 \* Critical Characteristics: relating to Safety and/or Regulatory Compliance  
 X Significant Characteristics: relating to Process Control (PCT)  
 C Control Dimensions: relating to Form - Fit - Function as defined by Cole Hersee Company and/or the Customer.  
 Note that the identification of any characteristic as being "Special" does not alter the requirement that ALL specifications & tolerances must be met.  
 Pg. 1 of 1

**Cole Hersee Co.**  
 20 Old Colony Ave., South Boston, MA, 02127  
 Phone: 617-258-2100 Web: www.colehersee.com

**Description:** SW, ROTARY 3POS

**Drawing/Part No.:** 75712-04

**Current Rev.:** B