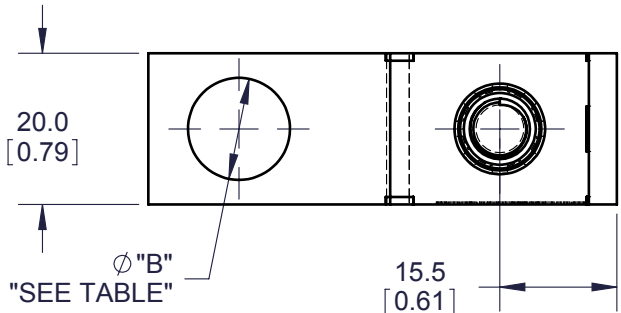
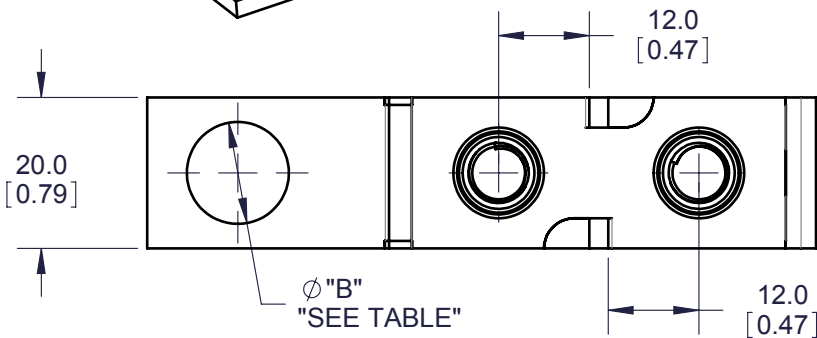
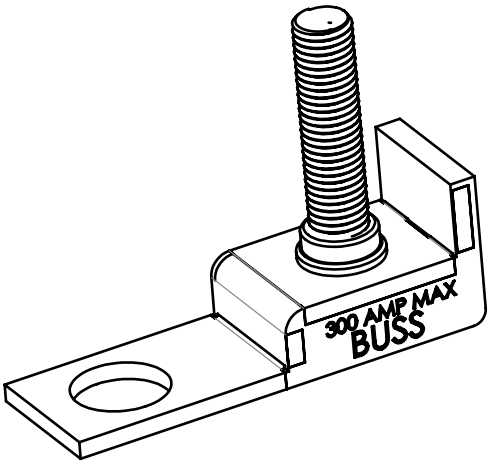
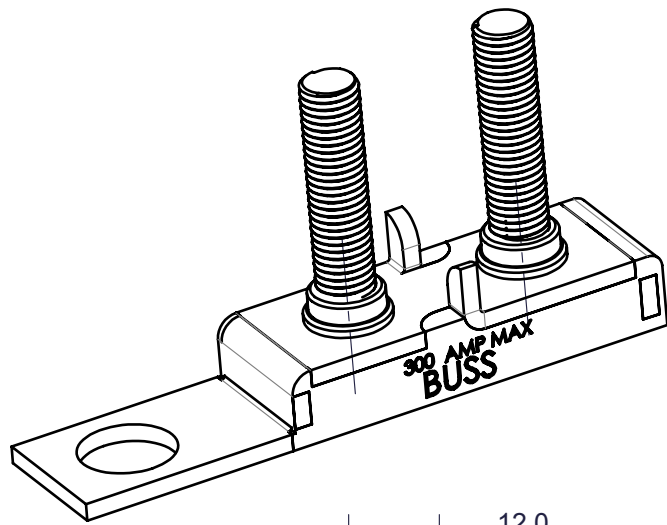


**EATON CORPORATION - CONFIDENTIAL AND PROPRIETARY**  
NOTICE TO PERSONS RECEIVING THIS DOCUMENT AND/OR TECHNICAL INFORMATION

THIS DOCUMENT, INCLUDING THE DRAWING AND INFORMATION CONTAINED THEREON, IS CONFIDENTIAL AND IS THE EXCLUSIVE PROPERTY OF EATON CORPORATION, AND IS MERELY ON LOAN AND SUBJECT TO RECALL BY EATON AT ANY TIME, BY TAKING POSSESSION OF THIS DOCUMENT. THE RECIPIENT ACKNOWLEDGES AND AGREES THAT THIS DOCUMENT CANNOT BE USED IN ANY MANNER ADVERSE TO THE INTERESTS OF EATON AND THAT NO PORTION OF THIS DOCUMENT MAY BE COPIED OR OTHERWISE REPRODUCED WITHOUT THE PRIOR WRITTEN CONSENT OF EATON. IN THE CASE OF CONFLICTING CONTRACTUAL PROVISIONS, THIS NOTICE SHALL GOVERN THE STATUS OF THIS DOCUMENT.

©2008 Eaton Corporation, All Rights Reserved.

REV	DESCRIPTION	ECN	DATE	APPR
X1	CHANGED TO B-SIZE SHEET JGU		02-19 2008	
0	RELEASED TO SALES ECN: BU-U08043 JGU		02-20 2008	CTH
1	ADDED 1MM LENGTH, OVERMOLDED 3 FACES OF BEND PART OF METAL ( FOR SINGLE STUD): 15.5 WAS 14.5, 30.0 WAS 29.0 61.9 WAS 60.9, ADDED AMPERAGE RATING AND LOGO MARKING TO PART. ECN: BU-U08130 CTH		04-24 2008	
-	REDRAWN FROM PDF TO SOLIDWORKS		12-04 2010	LNT
2	CONVERT TOLERANCE FROM 62.00 +/- 0.13 to 62.00 +/- 0.50. REMOVE PLANT CODE 56. CONVERT TO EATON TEMPLATE	BU-U15103	03-31- 2015	AEZ



CFBARX - XXXXP

S - 3/8" MOUNTING HOLE  
B - 1/2" MOUNTING HOLE

250 - 1/4-20 STUD  
M8X - M8 STUD

1 - SINGLE STUD  
2 - DOUBLE STUD

TABLE:


PART #	DIM "A"	DIM $\phi$ "B"
CFBAR1-250SP	44.5[1.75]	10.3[0.405]
CFBAR1-M8XSP	46.5[1.83]	10.3[0.405]
CFBAR1-250BP	44.5[1.75]	13.5[0.531]
CFBAR1-M8XBP	46.5[1.83]	13.5[0.531]
CFBAR2-250SP	44.5[1.75]	10.3[0.405]
CFBAR2-M8XSP	46.5[1.83]	10.3[0.405]
CFBAR2-250BP	44.5[1.75]	13.5[0.531]
CFBAR2-M8XBP	46.5[1.83]	13.5[0.531]

NOTES:

- RATINGS:  
VOLTAGE: 58VDC MAX.  
AMPERAGE: 300A MAX. TOTAL PER CFBAR
- BODY MATERIAL: THERMOPLASTIC PPS UL94-VO,  
BUSBAR MATERIAL: COPPER C110 NICKEL PLATED,  
STUD MATERIAL: STAINLESS STEEL
- MAXIMUM OF 12N.M [106 LBF.IN] OF TORQUE.

DOUBLE STUDS (CFBAR2-XXXXP)

SINGLE STUD (CFBAR1-XXXXP)



**Powering Business Worldwide**

CPCD - TRANSPORTATION  
TUALATIN, OR

○ CAPSULE AROUND DIMENSION INDICATES INCOMING INSPECTION REQUIRED

△ INDICATES CRITICAL CHARACTERISTIC (MUST MEET CPK REQUIREMENTS)

**IN ACCORDANCE WITH CRP-SS-01-01-03 SUPPLIER MANUAL**

DRAWING IN ACCORDANCE WITH

ASME Y14.100 - 2013  
ASME Y14.1M - 2012  
[ASME Y14.1 - 2012]  
ASME Y14.5 - 2009

UNLESS OTHERWISE SPECIFIED DIMENSIONS ARE IN MILLIMETERS

X ±3 X° ±1  
X.X ±0.5 X.X° ±0.5  
X.XX ±0.13

THIRD ANGLE PROJECTION

ENG/MFG REFERENCE

MATERIAL: SEE NOTES

FINISH: SEE NOTES

RELATED DOCUMENT: NA

DRAFTER/DESIGNER  
JGU

ENGINEERING APPROVED  
ANN ZUZULY

CHANGE RESPONSIBILITY  
ENGINEERING

DATE (YYYY/MM/DD)  
02/19/08

MANUFACTURING

ECO No  
BU15103

TITLE  
**MARINE BATTERY FUSE  
BUSBAR SALES**

SIZE B  
DRAWING NUMBER  
**CFBARX-XXXXP SALES**

REVISION  
2

CAGE CODE NO. N/A  
PLANT CODE U  
CLASS CODE NA  
SCALE 1:1  
SHEET 1 OF 1