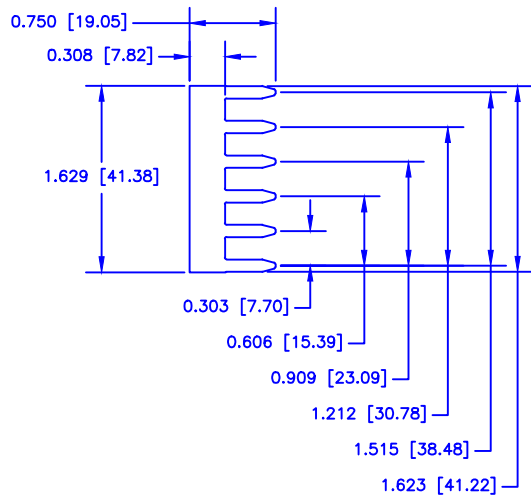
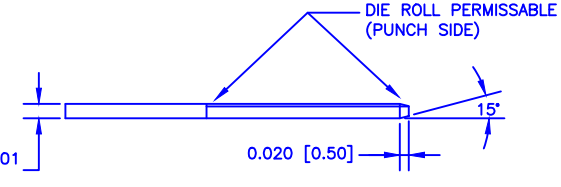
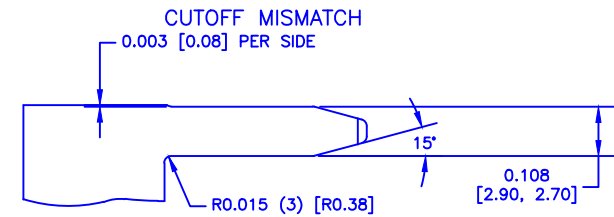
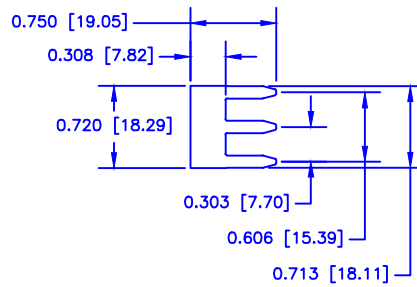


PART # 405052

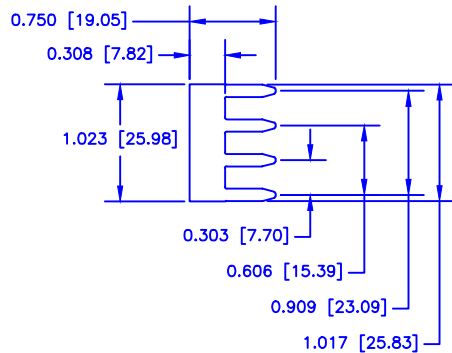


PART # 405055

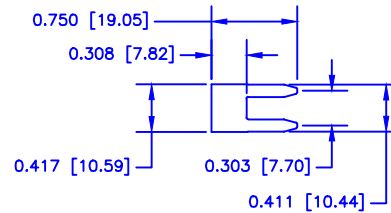


4X SCALE

PART # 405057




PART # 405056



MATERIAL INFORMATION;
BRASS CDA 210 SPRING
TEMPER 8 NUMBERS HARD,
PRE PLATED 0.0001- 0.0003
PURE TIN PLATE.

NOTE: TOLERANCE
± 0.15 MM

 TOOL & MFG.	CUSTOMER Unlimited Services	
	PART NAME TERMINAL BUSS BAR	
LEAD	PART NUMBER 4050502	REV.
MATERIAL SEE NOTE		
AUTOCAD FILE NAME 405052.DWG	ULTRA JOB NO# T-UNL 10595	SHEET 1 OF 1
SCALE 1:1	DATE 12/01	DRN. BY RJP