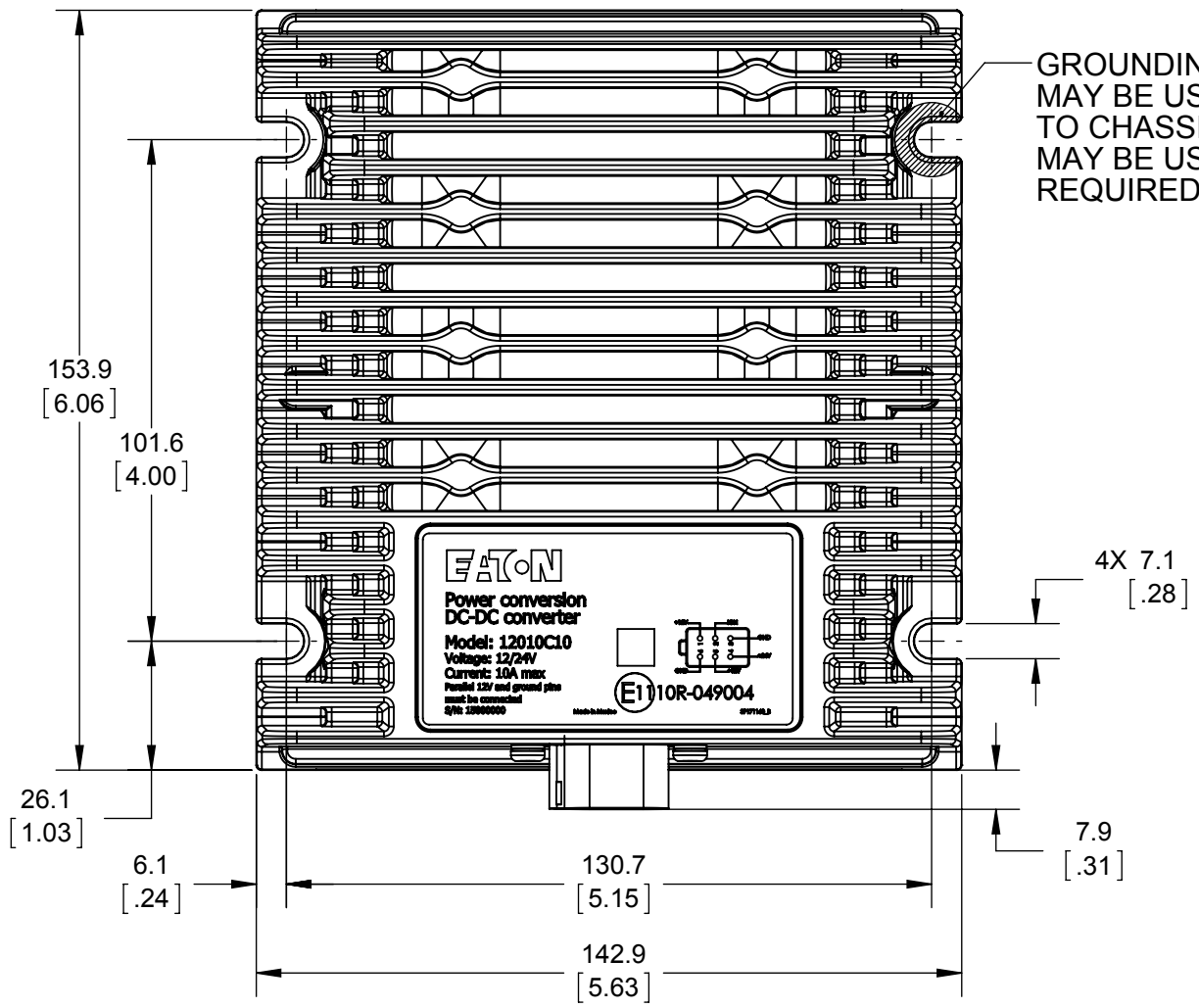
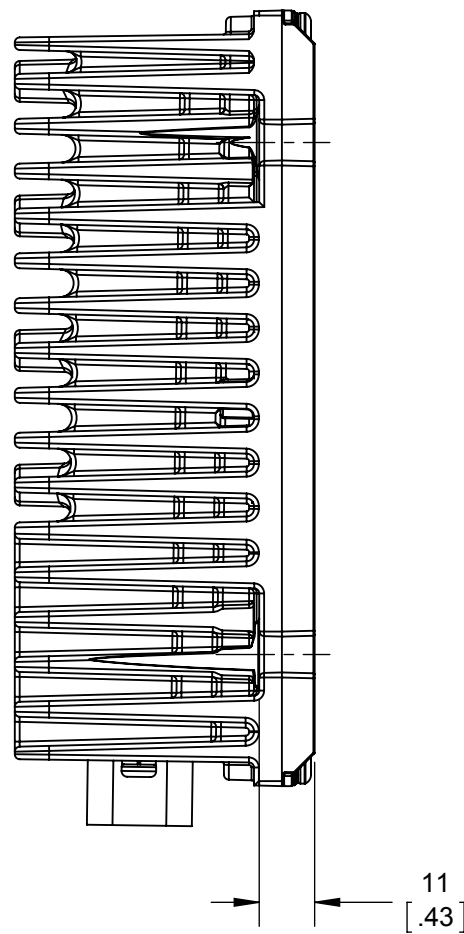


EATON CORPORATION - CONFIDENTIAL AND PROPRIETARY
 NOTICE TO PERSONS RECEIVING THIS DOCUMENT AND/OR TECHNICAL INFORMATION

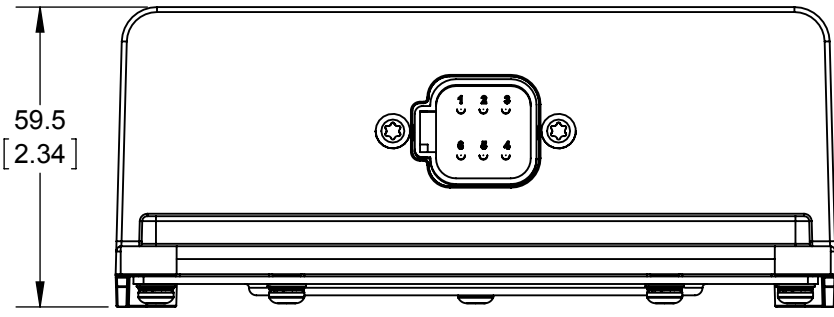
THIS DOCUMENT, INCLUDING THE DRAWING AND INFORMATION CONTAINED THEREON, IS CONFIDENTIAL AND IS THE EXCLUSIVE PROPERTY OF EATON CORPORATION, AND IS MERELY ON LOAN AND SUBJECT TO RECALL BY EATON AT ANY TIME, BY TAKING POSSESSION OF THIS DOCUMENT. THE RECIPIENT ACKNOWLEDGES AND AGREES THAT THIS DOCUMENT CANNOT BE USED IN ANY MANNER ADVERSE TO THE INTERESTS OF EATON AND THAT NO PORTION OF THIS DOCUMENT MAY BE COPIED OR OTHERWISE REPRODUCED WITHOUT THE PRIOR WRITTEN CONSENT OF EATON. IN THE CASE OF CONFLICTING CONTRACTUAL PROVISIONS, THIS NOTICE SHALL GOVERN THE STATUS OF THIS DOCUMENT.
 ©2014 Eaton Corporation, All Rights Reserved.

REVISIONS				
REV.	DESCRIPTION	ECO No.	DATE	BY
B	PRODUCTION RELEASE	ECO-091699	10/26/2015	KP

D
C
B
A



GROUNDING PAD MAY BE USED TO CONNECT HEATSINK TO CHASSIS. INSULATING WASHER MAY BE USED IF GROUNDING NOT REQUIRED.



- NOTES: (UNLESS OTHERWISE SPECIFIED)
1. FINISH: GREY POWDER COAT
 2. MOUNTING SLOTS: ACCEPTS M6 OR 1/4" HARDWARE
 3. MATING CONNECTOR: DT06-6S-****
 4. CONNECTIONS:
 +24V: PIN 4
 GND: PIN 3 AND PIN 6
 +12V: PIN 1 AND PIN 5, 10A MAX
 IGN: PIN 2
 5. WEIGHT: 1.31 KG



○ CAPSULE AROUND DIMENSION INDICATES INCOMING INSPECTION REQUIRED
 ▲ INDICATES CRITICAL CHARACTERISTIC (MUST MEET CPK REQUIREMENTS)
 IN ACCORDANCE WITH CRP-SS-01-01-03 SUPPLIER MANUAL

DRAWING IN ACCORDANCE WITH
 ASME Y14.100 - 2013
 ASME Y14.1M - 2012 [ASME Y14.1 - 2012]
 ASME Y14.5 - 2009

UNLESS OTHERWISE SPECIFIED DIMENSIONS ARE IN MILLIMETERS
 X ±3 X° ±1
 X.X ±0.5 X.X° ±0.5
 X.XX ±0.13
 THIRD ANGLE PROJECTION

ENG/MFG REFERENCE
 MATERIAL: ELECTRONIC ASSEMBLY
 FINISH: POWDER COAT
 RELATED DOCUMENT: 12010X10

DRAFTER/DESIGNER
 KPFLUEGER
 DATE (YYYY/MM/DD)
 03/20/2014
 ENGINEERING APPROVED
 KPFLUEGER
 MANUFACTURING
 CHANGE RESPONSIBILITY
 ENGR
 ECO No.
 ECO-091699

TITLE 12010X10 SPEC OVERVIEW				
SIZE B	DRAWING NUMBER 12010X10	REVISION B		SHEET 1 OF 1
CAGE CODE NO. N/A	PLANT CODE U	CLASS CODE 1	SCALE 2:3	