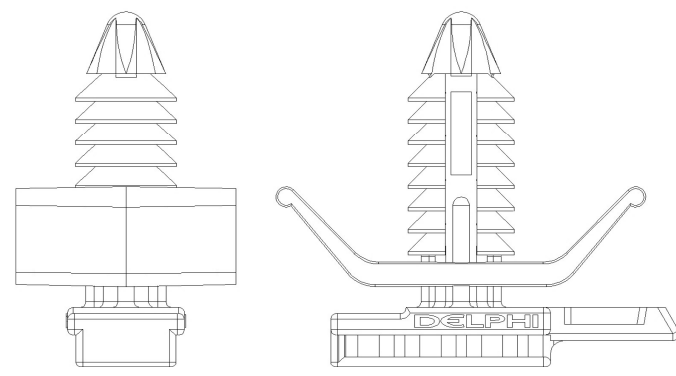
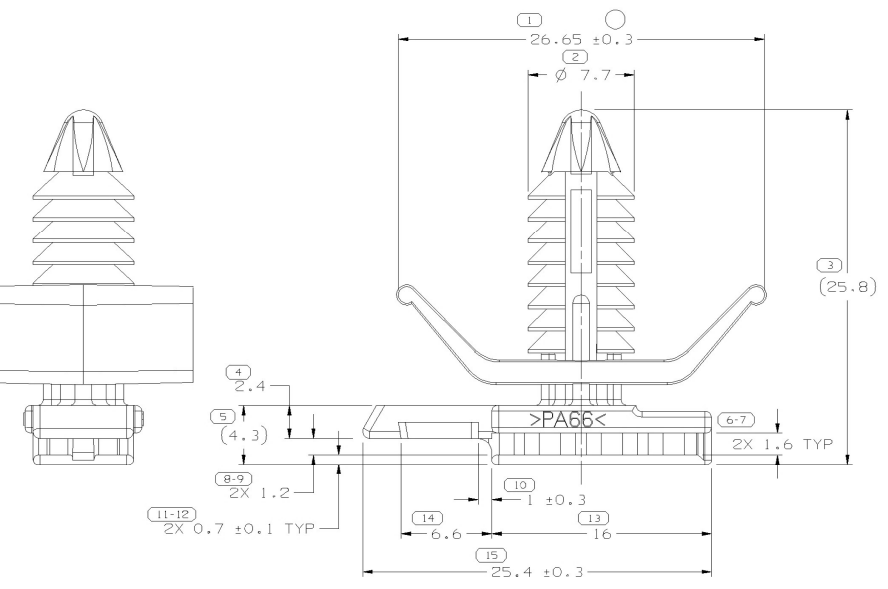
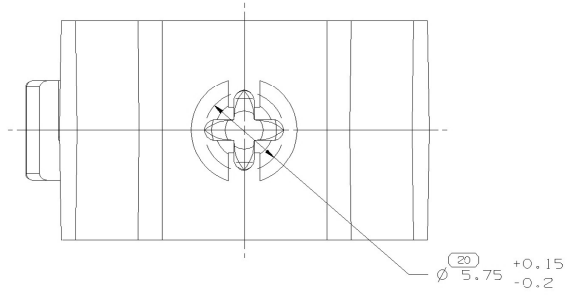


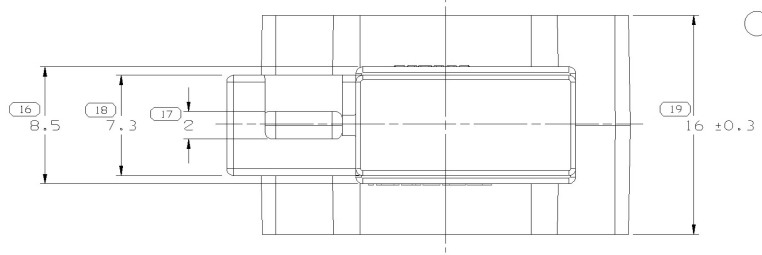
SYMBOL DEFINITION		MISSING NUMBERS	
THE NUMBER INSIDE THE SYMBOL ( )	TOTAL NO. OF SYMBOLS ON DRAWING	17	
CORRESPONDS TO THE NUMBER ON THE INSPECTION REPORT FOR THIS DRAWING/PART NUMBER	LAST NO. USED	20	

DWG STATUS				ZONE	REVISION HISTORY	AUTH
DATE	STG	REV	N/P	CHG		
11AU03	R	C2	-		CLEARED REV COL. MAT'L SPEC WAS R0071754, 244404 26.65 ±0.3 WAS 26.65 ±0.15 & ADDED NOTES (2 PLCS)	



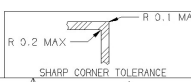
NOTES

- UNLESS OTHERWISE SPECIFIED AND/OR INDICATED: DIMENSIONS ARE TO FACE OF VIEW SHOWN AND AUTOMATICALLY ROUNDED BY COMPUTER FOR INSPECTION (SEE MATH MODEL FOR PRECISE DIMENSIONS). FOR ALL OTHER DIMENSIONS NOT SHOWN BUT REQUIRED FOR TOOL BUILD, SEE MATH MODEL FOR PRECISE TOOL PATH DATA.
- MATERIAL RECYCLING CODE >PA66< PER SAE J1344. (1.3)X(0.1) RAISED CHARACTERS AS SHOWN TO BE LOCATED ON ANY EXTERIOR SURFACE. OPTIONAL CONSTRUCTION TO BE NO MATERIAL RECYCLING CODE.
- MATING COMPONENTS OR EQUIVALENT: CONNECTOR 12110781
- (1.3)X(0.1) RAISED DELPHI CORPORATE BRAND TO BE LOCATED ON ANY EXTERIOR SURFACE, PREFERABLY VISIBLE AT FINAL ASSEMBLY. OPTIONAL CONSTRUCTION TO BE "PED" OR NO LOGO.
- RECOMMENDED HOLE SIZE - Ø6.35 IN B MAX THICK STOCK.
- THIS PART IS NOT CONTROLLED FOR AUTOMATIC FEEDING.



DWG TYPE		PART DRAWING	
STYLE			
VOLUME (CM <sup>3</sup> )	1.553	DISTR CODE	D
ROUTING	6900		
UNLESS OTHERWISE SPECIFIED			
THIS DOCUMENT IS IN ACCORDANCE WITH ASME Y14.5M-1994 AS AMENDED BY THE GM GLOBAL DIMENSIONING AND TOLERANCING ADDENDUM-2001. SEPARATE PATTERNS OF FEATURES MAY BE GAGED SEPARATELY REGARDLESS OF DATUM REFERENCES.			
ALL DIMENSIONS ARE IN MILLIMETERS			
REFERENCE	701,001		
	12110341		
THIRD ANGLE PROJECTION	DO NOT SCALE		
USE MATH DATA			

DIMENSIONAL RANGE (MM)		CHART E1	
FROM	> 0	> 30	> 200
TO	20	70	300
TOLERANCE UNLESS OTHERWISE SPECIFIED			
	±0.15	±0.3	±0.6
ANGULAR TOLERANCE: ±2°			



DELPHI			
DELPHI PACKARD ELECTRIC SYSTEMS			
WARREN, OH			
DR			
APVD1	BRIAN MADISON		
APVD2	BRIAN MADISON		
APVD3	BRIAN HAMILL		
APVD4			
APVD5			
SUBSTANCES OF CONCERN AND RECYCLING CONTENT PER DELPHI 10949001			
MATERIAL	M3592001 PA66 HS 1M BLK		
DRAWING NAME	MOUN CLIP 6.63 N/A CON		
DRAWING NUMBER	12110783		
SIZE	SCALE	FRAME NO	SHEET NO
A1	5:1	1 OF 1	1 OF 1