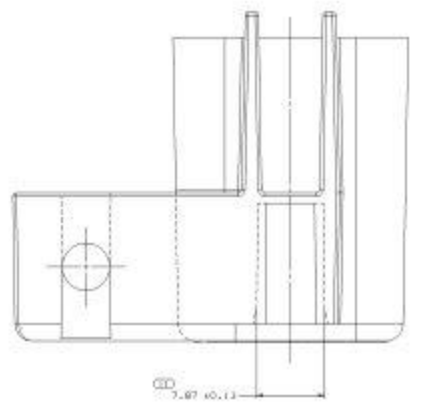
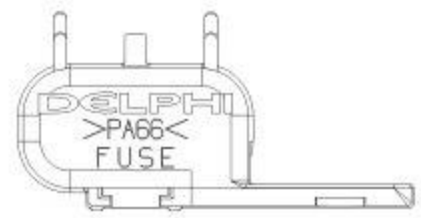
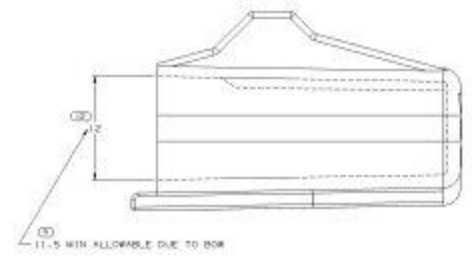
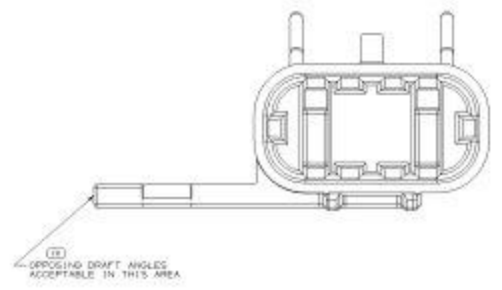
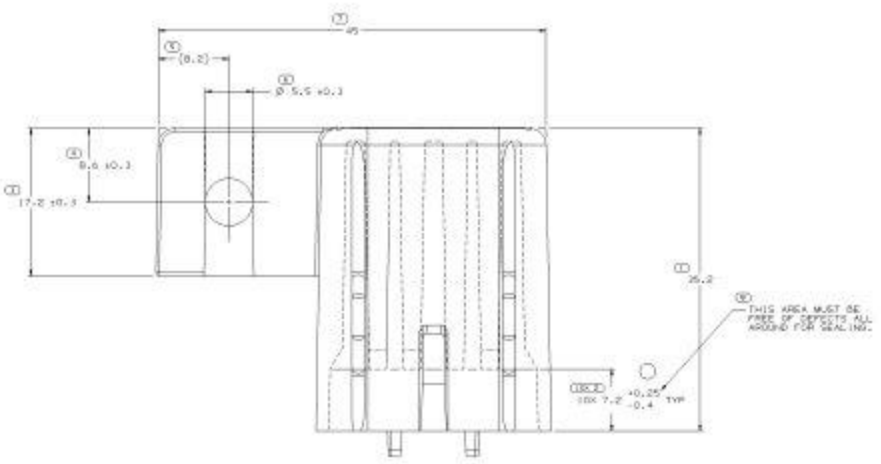


SYMBOL DEFINITION		TOTAL NO OF INSPECTIONS REQUIRED	
A DIMENSION WITHOUT AN INSPECTION REPORT SYMBOL DOES NOT REQUIRE INSPECTION. IT MAY BE CONTROLLED ON THE INDIVIDUAL COMPONENT DRAWING.		21	
		12	

MISSING SYMBOLS		REV STATUS		DATE		BY		REVISION		REV		DATE	
NO MISSING SYMBOLS	FRAMCOT	21		12/20/04	12/20/04								
21													
12													



VIEW SCALE DOES NOT REFLECT ACTUAL PART SIZE

- NOTES
- UNLESS OTHERWISE SPECIFIED AND/OR INDICATED: DIMENSIONS ARE TO FACE OF VIEW SHOWN AND AUTOMATICALLY ROUNDED BY COMPUTER FOR INSPECTION (SEE MATH MODEL FOR PRECISE DIMENSIONS). FOR ALL OTHER DIMENSIONS NOT SHOWN BUT REQUIRED FOR TOOL BUILD, SEE MATH MODEL FOR PRECISE TOOL PATH DATA.
  - MATERIAL RECYCLING CODE PER ISO 11469. IJ 31X10. IF RAISED CHARACTERS ARE SHOWN TO BE LOCATED ON ANY EXTERIOR SURFACE, OPTIONAL CONSTRUCTION TO BE NO MATERIAL RECYCLING CODE.
  - THIS PART IS NOT CONTROLLED FOR AUTOMATIC ASSEMBLY.
  - REFERENCE MATING COMPONENTS OR EQUIVALENT CONNECTOR & SEAL ASM 12023769
  - IJ 31X10. IJ DELPHI CORPORATE BRAND TO BE LOCATED ON ANY EXTERIOR SURFACE, PREFERABLY VISIBLE AT FINAL ASSEMBLY. OPTIONAL CONSTRUCTION FOR EXISTING TOOLING MAY BE "FRED".

PART NO	REV	REP	STATUS	MATERIAL SPECIFICATION AND COLOR	VOLUME CM3
12089272	A1	-	-	M200004 PANG HS IM RED	0.516
12089272	D4	-	-	M200004 PANG HS IM YEL	0.516
12023733	D5	-	-	M200001 PANG HS IM BLK	0.516

**DELPHI**  
 DELPHI POWER-ELECTRIC SYSTEM  
 MODEL 91

REV	DATE	BY	CHKD
A1	12/20/04	MM	MM
D4	12/20/04	MM	MM
D5	12/20/04	MM	MM

TEXT ON FUSE

12089272

DATE: 12/20/04

PROCESSED BY: [Signature]

DATE: 12/20/04

TIME: 10:00 AM

SCALE: 1:1

UNIT: MM