

Series 25X Mid-Range Circuit Breakers

Specifications

Auto (Type 1), Modified (Type 2) & Manual (Type 3) breakers available

Single Pole Thermal Type Breakers

Applications: This unit is external ignition protected and weatherproof. It is typically used in DC power systems in marine applications (as a main or branch circuit breaker), truck, bus and RV systems, add-on protection for accessories, etc

Rating: 10-50A, 32VDC

Interrupt Rating: Circuit Protection (2.5kA) per ABYC E-11

Operating Temperature Rating: -40°F (-40°C) to 185°F (85°C)

Storage Temperature Rating: -40°F (-40°C) to 260°F (125°C)

Materials: Black UL 94-V0 thermoset plastic body. Cover, lever, and button are UL Rated 94V0 thermoplastic. Cover has a black thermoplastic elastomer over mold

Marking: Standard marking includes amp/volt ratings, part numbers, and "SAE Type B"

Termination: #10-32 Threaded studs

Torque Rating: 24 in-lbs (2.7N • m) max



Mounting Torque Rating: Panel mount with either #8-32 threaded inserts or #10 clearance holes. 18 in-lbs (2.0N • m) max

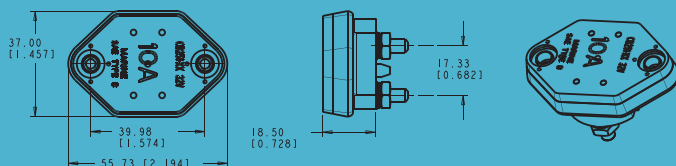
Ingress Protection Rating: IP66

Features / Options: Series 254 & 255 have a unique reset mechanism which provides a visual indication of tripped condition. Series 255 also features a push-to-trip option

Compliances: SAE J553; ABYC E-11; SAE J1171 (ignition protected)

Dimensions in Inches (mm)

251 SERIES



254 SERIES

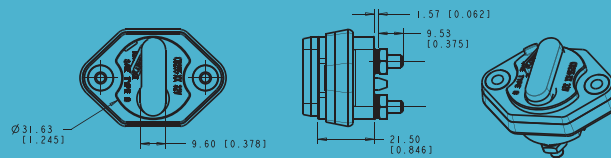


FIGURE 4. BOTTOM VIEW OF HOUSING

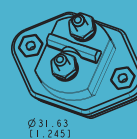
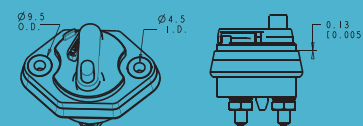


FIGURE 6. MIG. WASHER

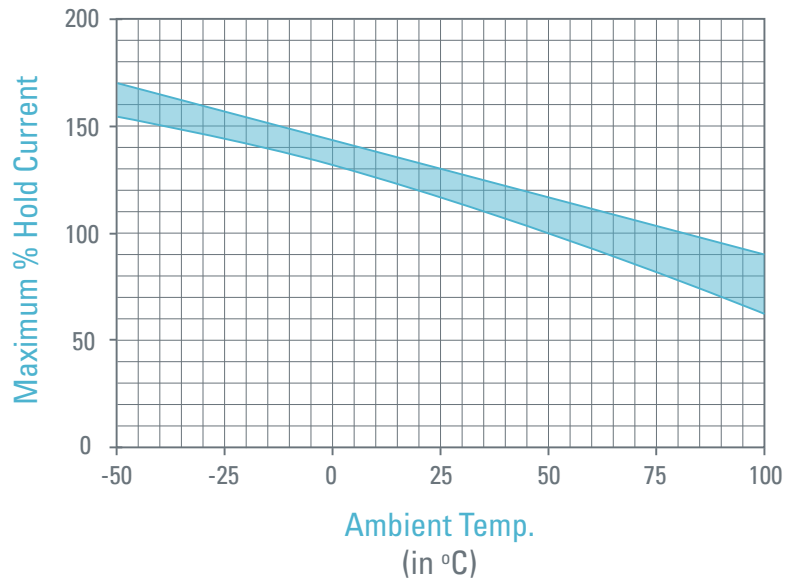


Ordering information

Series	Rating	Mounting Holes	Hardware
251 = Type I, 32V	10 = 10 amps	A = Thru-hole Insert (#10 Clearance)	0 = None
254 = Type III, 32V	15 = 15 amps	B = #8-32 Threaded Inserts	1 = Nuts installed
255 = Type III w/push-to-trip option, 32V	20 = 20 amps		2 = Nuts bulk
	25 = 25 amps		
	30 = 30 amps		
	35 = 35 amps		
	40 = 40 amps		
	50 = 50 amps		

Temperature Derating / Time Current Curves

Temperature Derating Curves



Trip Time vs. % Rated Current

