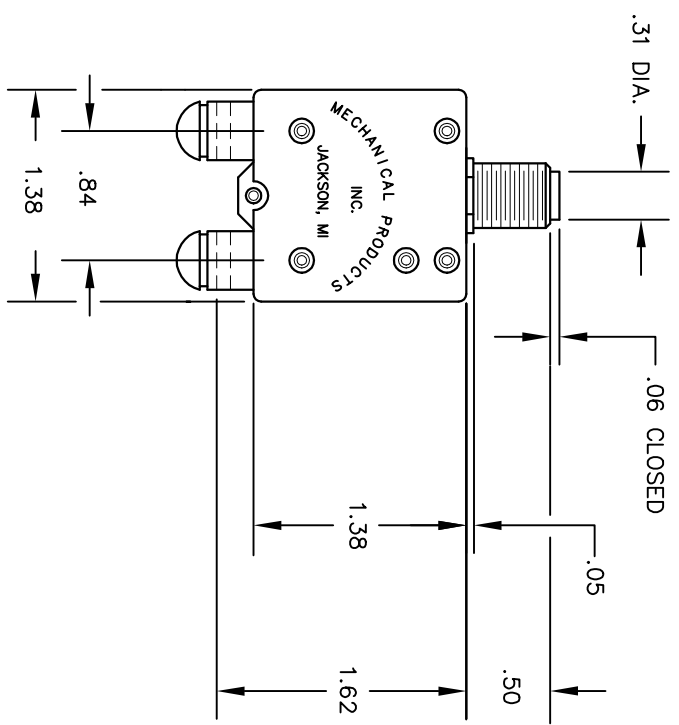
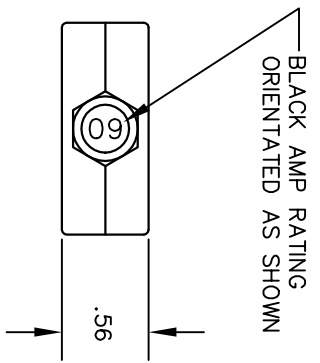
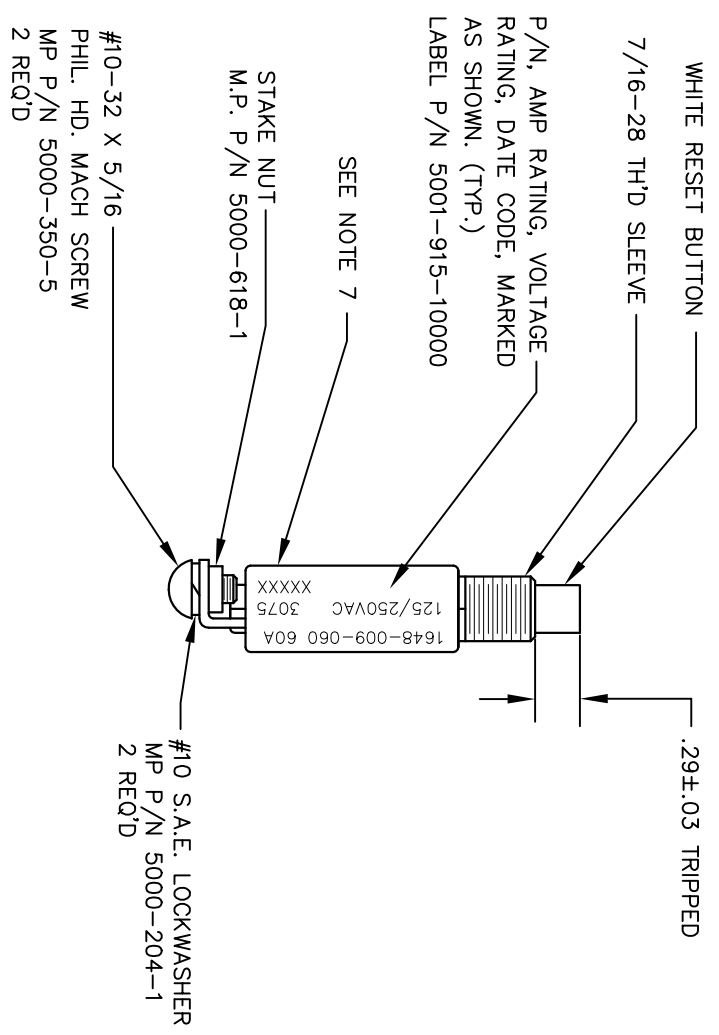


NOTES:

1. FOR AVAILABLE AMP RATINGS SEE D/N 1648-801.
2. FOR AVAILABLE MOUNTING HARDWARE SEE D/N 1600-800.
3. WIRE GAUGE TO BE IN ACCORDANCE WITH NATIONAL ELECTRICAL CODE STANDARDS.
4. FOR CALIBRATION DATA SEE D/N 1648-701.
5. FOR VARIATION CHART SEE D/N 1648-802.
6. AT 77±3°F A MIN. PROTECTOR SHALL NOT TRIP ON LESS THAN RATED CURRENT. A MAX PROTECTOR SHALL TRIP ON 140% OF RATED CURRENT WITHIN ONE HOUR.
7. FOR PLANT DATA SEE D/N 1600-808.



REVISION		ENR	DATE	APPROVED
LTR	DESCRIPTION			
J	REDRAWN W/O CHANGE	12059	3/16/10	JA

MECHANICAL PROPERTIES		UNLESS OTHERWISE SPECIFIED DIMENSIONS ARE IN INCHES TOLERANCES ON		DFTL. MHB		10/31/06		MECHANICAL PRODUCTS, INC. JACKSON MICHIGAN U. S. A. 49204	
YP		.XX ± .02		CHECK				MANUAL RESET CIRCUIT PROTECTOR	
TS		.XXX ±		PROJ. ENG. JA		3/16/10			
EL 2		MATERIAL		DIR. OF ENG.					
RA				MFG.					
BH				D.C.					
RH		APPLICATION		SEE ENR FOR ABOVE SIGNATURES		SCALE FULL WEIGHT		EXP. NO. 1648-009	
				NEXT ASS'Y USED ON		CONTRACT NO.		SHEET 1 OF 1	