



# SERIES 19

RAISING THE BAR  
MP - COUNT ON IT

High Amperage 25 to 200 AMP

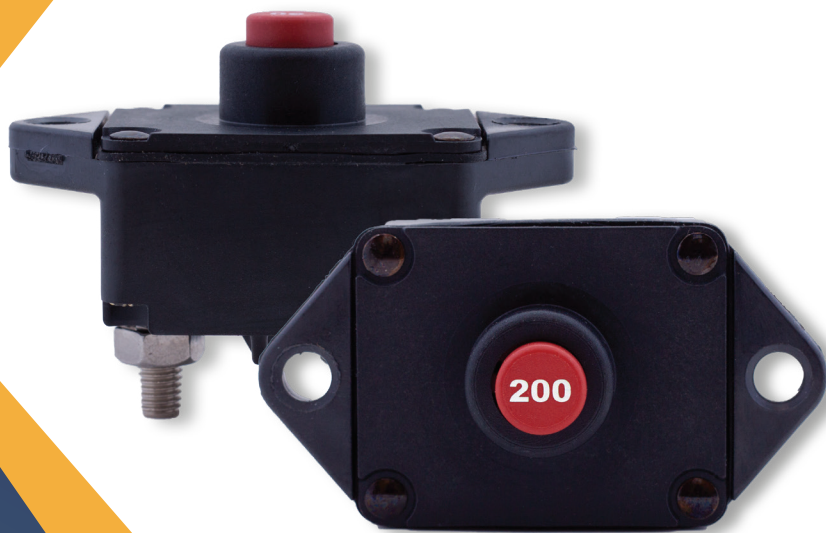
Type I & III Vehicle Protection

IP67 & IP69K Waterproof

SAE & ABYC Compliant

Ignition-Protected

LED *TripID*™ Option



## SUPERIOR CIRCUIT PROTECTION

[www.mechprod.com](http://www.mechprod.com)

## Series 19 Overview

### FEATURES:

Wider Amperage Range - 25 to 200 Amp  
Smallest available breaker to 200 Amp  
Superior Ingress Protection - IP67 & IP69K  
Designed for Harsh Applications to 30VDC  
LED *tripID*™ for open circuits  
Recognized per UL1077  
Type I and Type III manual reset



## Series 19 Specifications

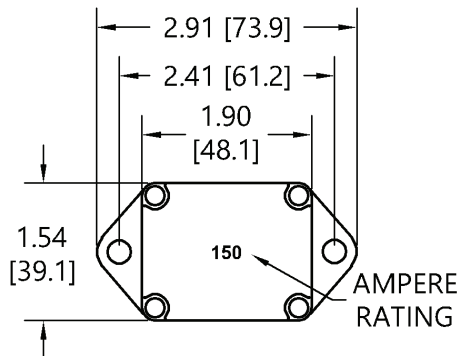
<b>Standard Amp Ratings</b>	25, 30, 35, 40, 45, 50, 60, 70, 80, 90, 100, 105, 120, 135, 150, <b>175, and 200</b> Amps
<b>Maximum Voltage Ratings</b>	30VDC
<b>Ultimate Trip</b>	Must hold 100% at 25°C / 77°F, Must trip at 135% within 1 hour
<b>Dielectric Strength</b>	1500VAC Minimum
<b>Interrupt Capacity (25 - 150A)</b>	2,500A @ 14VDC (Type III) 1,500A @ 28VDC (Type III) 2,500A @ 30VDC (Type I)
<b>Interrupt Capacity (175 - 200A)</b>	2,500A @ 30VDC (Type I and Type III)
<b>Endurance (25 - 150A)</b>	14VDC @ 100 cycles, 6X rating (Type I and Type III) 28VDC @ 100 cycles, 2X rating (Type III) 30VDC @ 100 cycles, 2X rating (Type I)
<b>Endurance (175 - 200A)</b>	14VDC @ 100 cycles, 6X rating (Type I) 14VDC @ 100 cycles, 2X rating (Type III) 28VDC @ 50 cycles, 2X rating (Type III) 30VDC @ 100 cycles, 2X rating (Type I)
<b>Operating Temperature Range</b>	-40°C / -40°F to 85°C / 185°F
<b>Torque Rating</b>	Mounting: #10-32 screws (for attached nut), 25 in-lbs max. 1/4" bolts (for 0.27" mtg holes), 50 in-lbs max.  Terminals: 1/4"-28 studs, 50 in-lbs max.
<b>Weight</b>	Panel Mount: 2.6 oz. (74 gm.) Panel Mount w/Plate: 5.0 oz. (140 gm.)
<b>Ignition Protected</b>	Compliant to SAE J1171
<b>Ingress Protection</b>	IP67 - Dust and waterproof rated. IP69K - High temperature an pressure spray
<b>Corrosion</b>	Conforms to Mil-STD-202, Method 101, Test Condition A, for 96 hours under a 5% salt spray
<b>Humidity</b>	Conforms to Mil-STD-202, Method 106, for 240 hours at 95% RH
<b>Shock</b>	Rated to withstand 100g per Mil-STD-202, Method 213, Test Condition A.
<b>Vibration</b>	Rated to withstand 10g per Mil-STD-204, Test Condition A.
<b>Regulatory Compliance Summary</b>	Interrupt Capacity: SAE J1625, ABYC-E11, UL1077* Ignition Protected: SAE J1171 Endurance: SAE J1625 Dielectric Strength: UL1077* Shock Vibration, Corrosion, Humidity: Mil-STD-202 Dust and Waterproof: IP67 High Temp & Pressure Spray: IP69K

\*tested per UL1077 methods

## Series 19 Physical Configuration

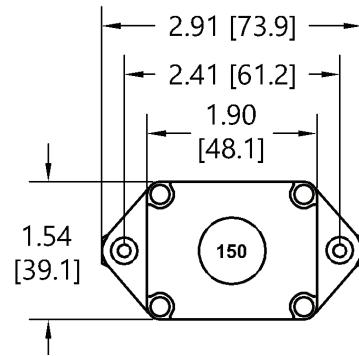
### 19A-P10

**Type I Auto Reset  
Panel Mount**



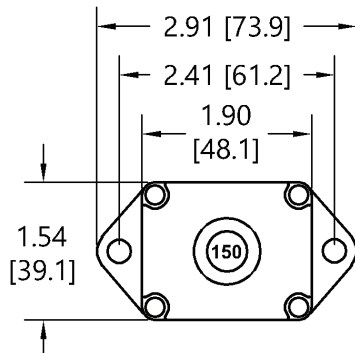
### 19A-P11

**Type I Auto Reset Panel Mount  
with LED tripIDtm and  
attached mounting nuts**



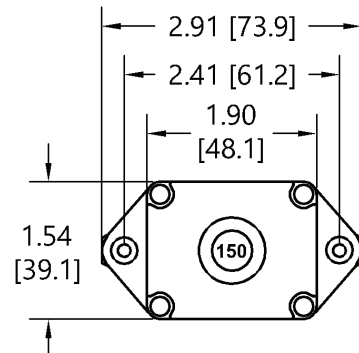
### 19M-P10

**Type III Manual Reset  
Panel Mount**



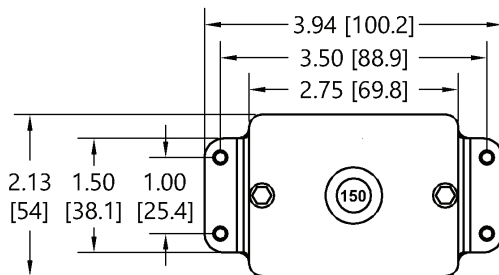
### 19M-P11

**Type III Manual Reset Panel Mount  
with attached mounting nuts**

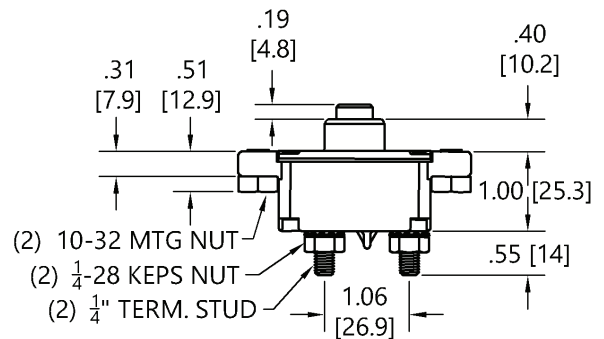


### 19M-P21

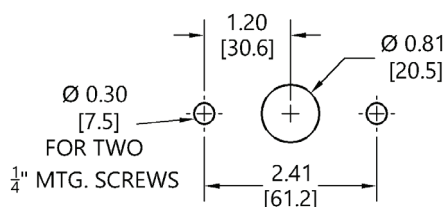
**Type III Manual Reset Panel Mount  
with wide mounting plate  
and attached mounting nuts**



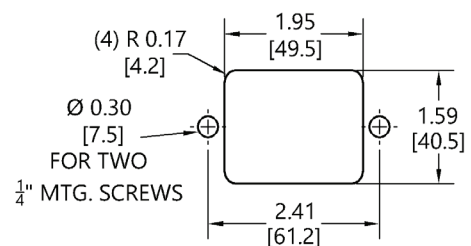
**Type III Manual Reset - Side View**

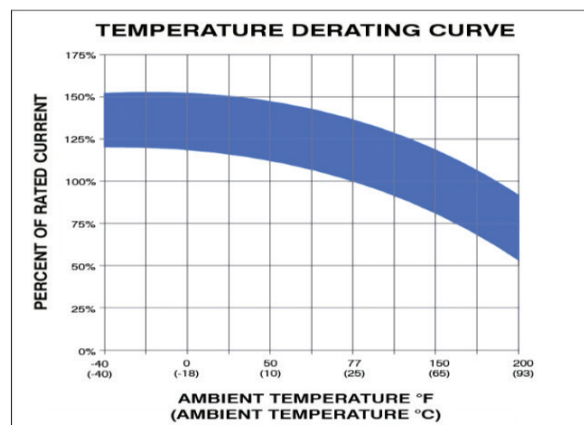
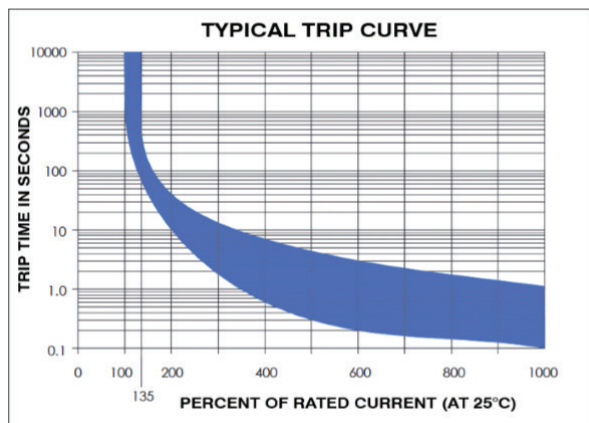


**Rear Mount Panel Cutout Dimensions  
without wide mounting plate**



**Front Mount Panel Cutout Dimensions  
without wide mounting plate**





#### Typical Overload Trip Time Data (in seconds)

Current Rating	200%	400%	600%	800 %	1000%
25-200 Amps	10-40	0.6-7.0	0.2-3.0	0.15- 2.0	0.09-1.2

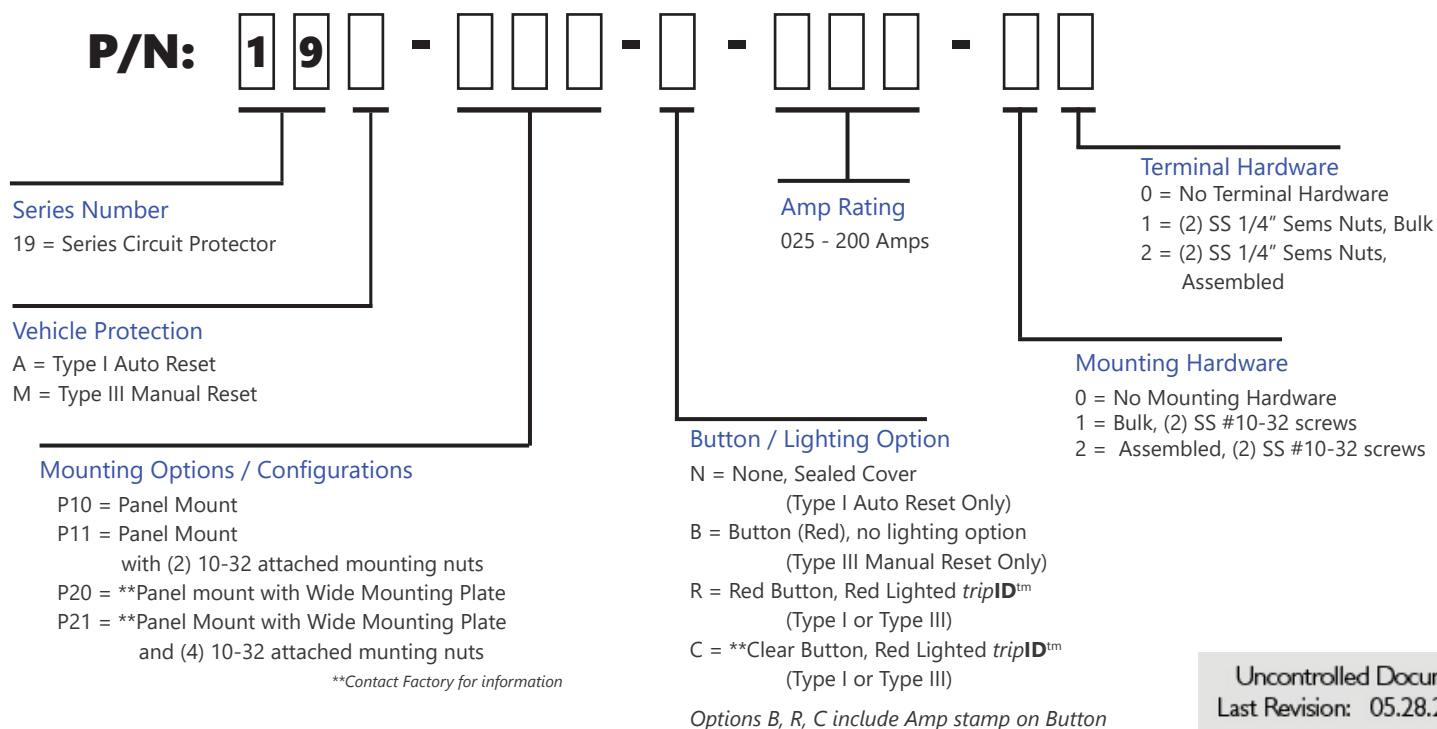
#### Typical Ambient Temperature Correction Factor

Current Rating	°F	-40	0	50	77	150	200
	°C	-40	-18	10	25	65	93
25-200 Amps		0.80	0.84	0.87	1.00	1.22	1.47



Type I Auto Reset w/ LED *tripID*™  
Shown: P/N 19A-P10-C-150-02

## Series 19 Part Numbering Guide



Uncontrolled Document  
Last Revision: 05.28.2021



1112 N. Garfield St. Lombard, IL 60148 helpme@mechprod.com  
phone 630 | 953 | 4100 fax 630 | 953 | 4110 www.mechprod.com

WARNING: Cancer & Reproductive Harm  
www.p65warnings.ca.gov/

Specifications subject to change

QC-4009-C