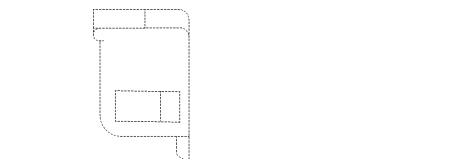
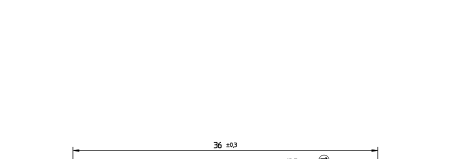


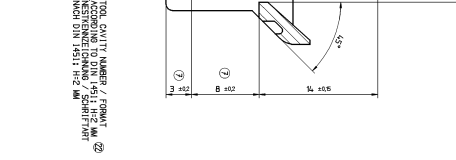
COOLING WIRE IS NOT TO BE INSERTED AS SHOWN BUT SHOULD BE HELD AT THE MOUNTING POSITION.



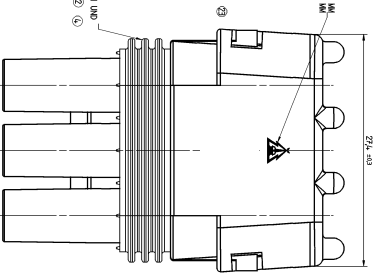
PART CAVITY NUMBER / FRONT ACCORDING TO DIN EN 14511: H=2 MM / 0.2 MM RECESSED DIM H=1.1 H=2 MM / 0.2 MM CENTER



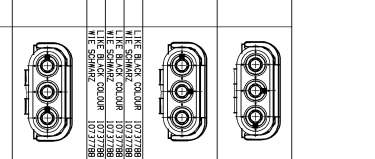
PLUGS WÄRDEN NICHT IN DIE AUSLAUFGEHÄUSEN EINZUFÜHREN. WENN WÄRDEN IN DIE AUSLAUFGEHÄUSEN EINZUFÜHREN. TEMPERATURE: 20°C ÜBER DIE TEMPERATUR



PART CAVITY NUMBER / FRONT ACCORDING TO DIN EN 14511: H=2 MM / 0.2 MM RECESSED DIM H=1.1 H=2 MM / 0.2 MM CENTER



MANUFACTURER MARK X 3 MM HERSTELLERZEICHEN X 3 MM



PART CAVITY NUMBER / FRONT ACCORDING TO DIN EN 14511: H=2 MM / 0.2 MM RECESSED DIM H=1.1 H=2 MM / 0.2 MM CENTER

Order No.	Part No.	Material	Drawing No.	Color	Quantity	Part No.	Material	Drawing No.	Color	Quantity	Part No.	Material	Drawing No.	Color	Quantity
1201132	1201132	BRASS	1201132	1201132	BRASS	1201132	1201132	BRASS	1201132
1201394	1201394	BRASS	1201394	1201394	BRASS	1201394	1201394	BRASS	1201394
1201590	1201590	BRASS	1201590	1201590	BRASS	1201590	1201590	BRASS	1201590
1200937	1200937	BRASS	1200937	1200937	BRASS	1200937	1200937	BRASS	1200937
1200401	1200401	BRASS	1200401	1200401	BRASS	1200401	1200401	BRASS	1200401
1200403	1200403	BRASS	1200403	1200403	BRASS	1200403	1200403	BRASS	1200403
1201594	1201594	BRASS	1201594	1201594	BRASS	1201594	1201594	BRASS	1201594
1201593	1201593	BRASS	1201593	1201593	BRASS	1201593	1201593	BRASS	1201593

Order No.	Part No.	Material	Drawing No.	Color	Quantity	Part No.	Material	Drawing No.	Color	Quantity	Part No.	Material	Drawing No.	Color	Quantity
1201132	1201132	BRASS	1201132	1201132	BRASS	1201132	1201132	BRASS	1201132
1201394	1201394	BRASS	1201394	1201394	BRASS	1201394	1201394	BRASS	1201394
1201590	1201590	BRASS	1201590	1201590	BRASS	1201590	1201590	BRASS	1201590
1200937	1200937	BRASS	1200937	1200937	BRASS	1200937	1200937	BRASS	1200937
1200401	1200401	BRASS	1200401	1200401	BRASS	1200401	1200401	BRASS	1200401
1200403	1200403	BRASS	1200403	1200403	BRASS	1200403	1200403	BRASS	1200403
1201594	1201594	BRASS	1201594	1201594	BRASS	1201594	1201594	BRASS	1201594
1201593	1201593	BRASS	1201593	1201593	BRASS	1201593	1201593	BRASS	1201593



DELPHI

DELPHI CONNECT SYSTEMS 3 WAY
MUTIFUNKTION

13685312

DELPHI CONNECT SYSTEMS 3 WAY
MUTIFUNKTION