

4

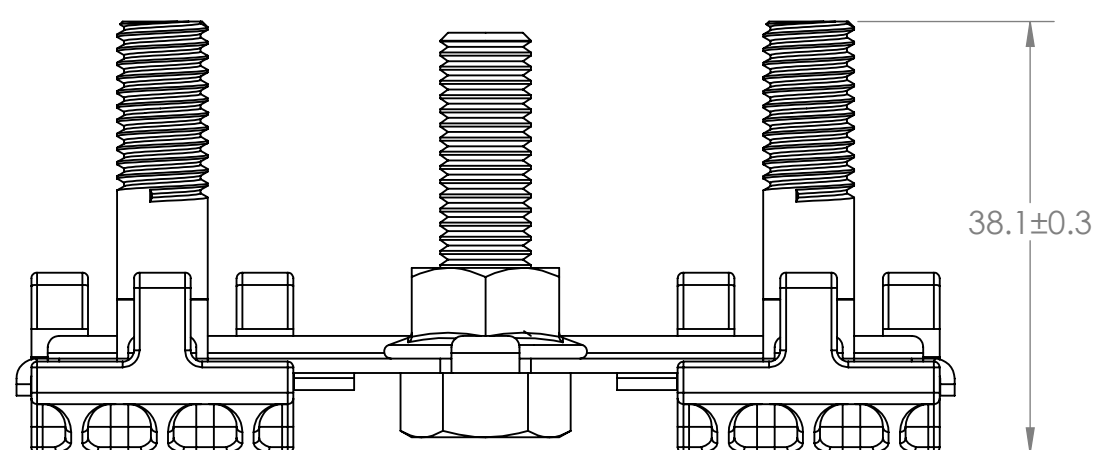
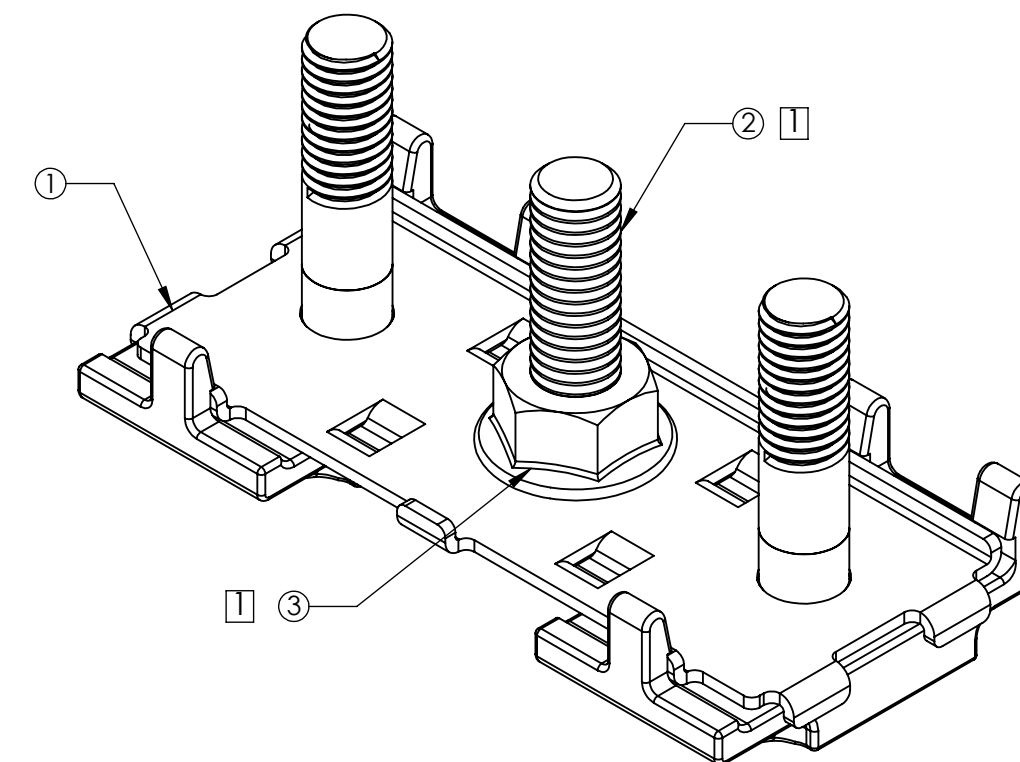
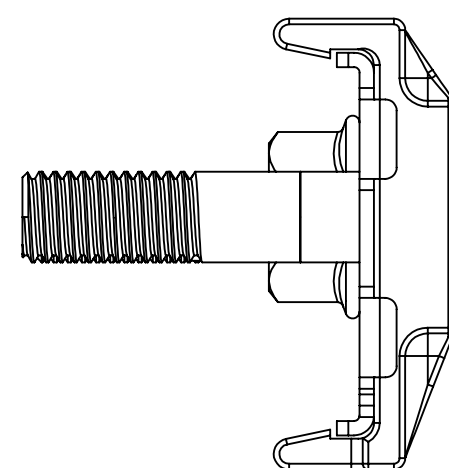
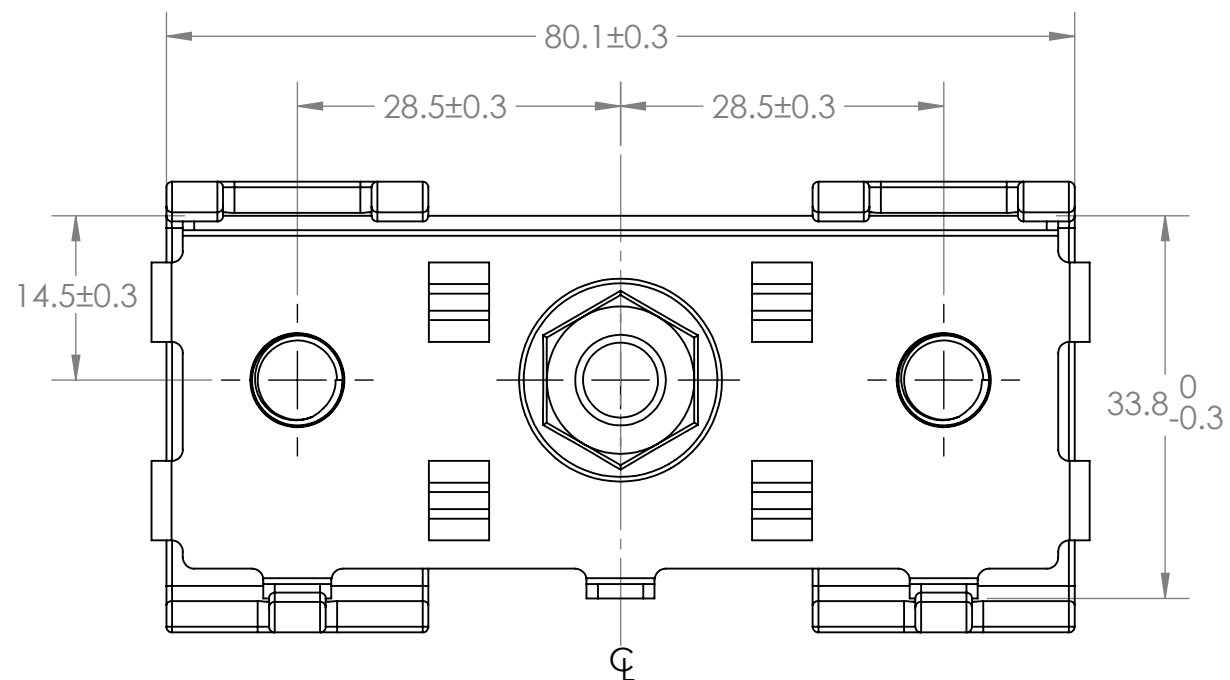
3

2

1

NOTE:  
 1. PARTS TO BE BAGGED

REVISIONS				
ZONE	REV.	DESCRIPTION	DATE	APPROVED
	A	PER EC#514692: INITIAL RELEASE	6/22/2015	J. LIU
	B	PER EC#515141: SUBSTITUED TWO COMPONENTS WITH A SUBASSEMBLY, ADDED PART NUMBERS IN BOM	10/16/2015	J. LIU
	C	PER EC#515639: ADDED ANNOTATION TO THE BOLT AND NUT, ADDED PACKING BAG IN THE BOM, ADDED NOTE	3/21/2016	J. LIU



BOM			
ITEM	PART NUMBER	DESCRIPTION	QTY
1	882-855	SUB ASSM-ZCASE FUSE HOLDER 2WAY	1
2	980002820	BOLT M8x1.25x30 SS	1
3	980003760	M8 x 1.25 SERRATED FLANGE HEX NUT SS	1
4	98677	BAG PLASTIC 4X5	1

DIMENSIONS ARE IN MM.  
 DIMENSIONS AND TOLERANCES ARE DEFINED ACCORDING TO ANSI / ASME Y14.5M-1994

THIS DRAWING AND THE INFORMATION CONTAINED WITHIN IT ARE CONFIDENTIAL AND MAY NOT BE COPIED OR DISCLOSED WITHOUT THE WRITTEN PERMISSION OF LITTELFUSE.

DRAWN	J. Liu	DATE	6/22/2015
CHECKED	-	-	-
-	-	-	-
-	-	-	-
-	-	-	-

THIRD ANGLE PROJECTION

**Littelfuse**  
 Export/Import Division | Americas Division  
 805 W ORCHARD DR., STE 6, BELLINGHAM, WA 98226  
 Phone (360)738-9010 Fax (360)738-0372

**BUS BAR AND STUD ASSM-ZCASE HOLDER 2WAY**

SIZE DWG. NO. **882-854** REV. **C**

SCALE 1.5:1 SHEET 1 OF 1

4

3

2

1