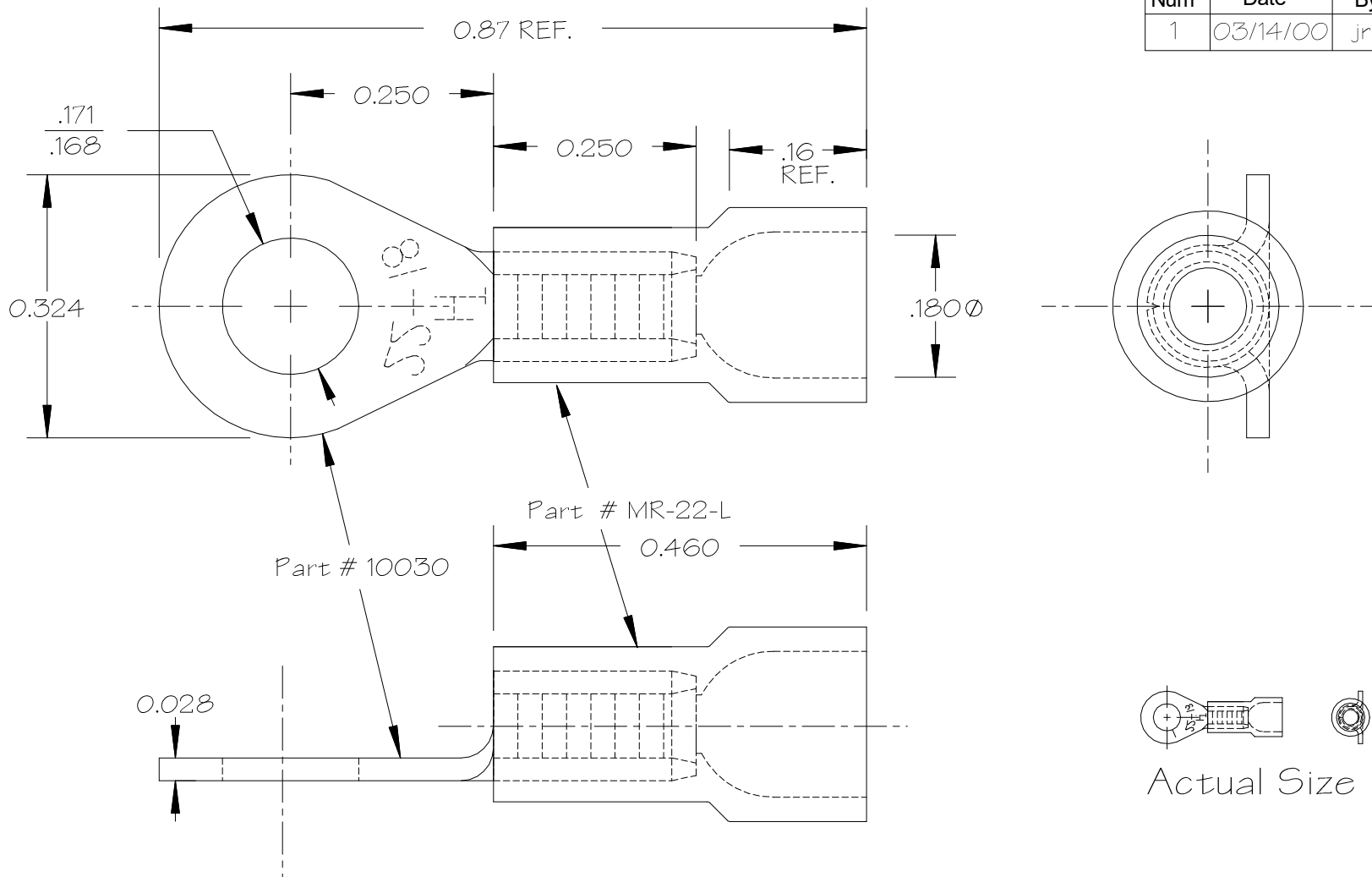


Num	Date	By	Revision Note
1	03/14/00	jrc	was 22-16



**Terminal Notes:**


1. Material: ETP Alloy 110 Copper 1/2 Hard Temper  
ASTM Spec B152
2. Heat Treat: Anneal to Soft Temper
3. Finish: Flash Electro Tin Plate ASTM Spec B545  
Mil Spec: Mil-T-10727C Type I.0001-.00025 Thick

**Insulator Notes:**

1. Material: Rigid PVC
2. Color: Red

**NOTES**

1. DO NOT SCALE PRINT.
2. BREAK ALL NON-CUTTING EDGES.
3. STAMP OR ETCH HTT,  
DET NO., MAT'L, & HEAT TREAT
4. GRIND AS SHOWN.

<b>TOLERANCES</b>		 250 Industrial Drive 2222 W. Moore Rd. Hillsdale, Michigan 49242	
UNLESS OTHERWISE SPECIFIED			
.XXX	+/- .010	Title Molded Vinyl Insulated 22-18 #8 Stud Ring	
.XX	+/- .020		
.X	+/- .030		
FRACTIONS +/- 1/32		DRAWN BY	DATE
ANGLES +/- 0°30'		J. Condon	03/07/04
DIE NUMBER	D-1	CHECKED BY	SCALE
SHEET SIZE		CAD DRAWING #	
A		50030	
MATERIAL		SCALE	
See Notes		5X	