

MATERIAL SPECIFICATIONS

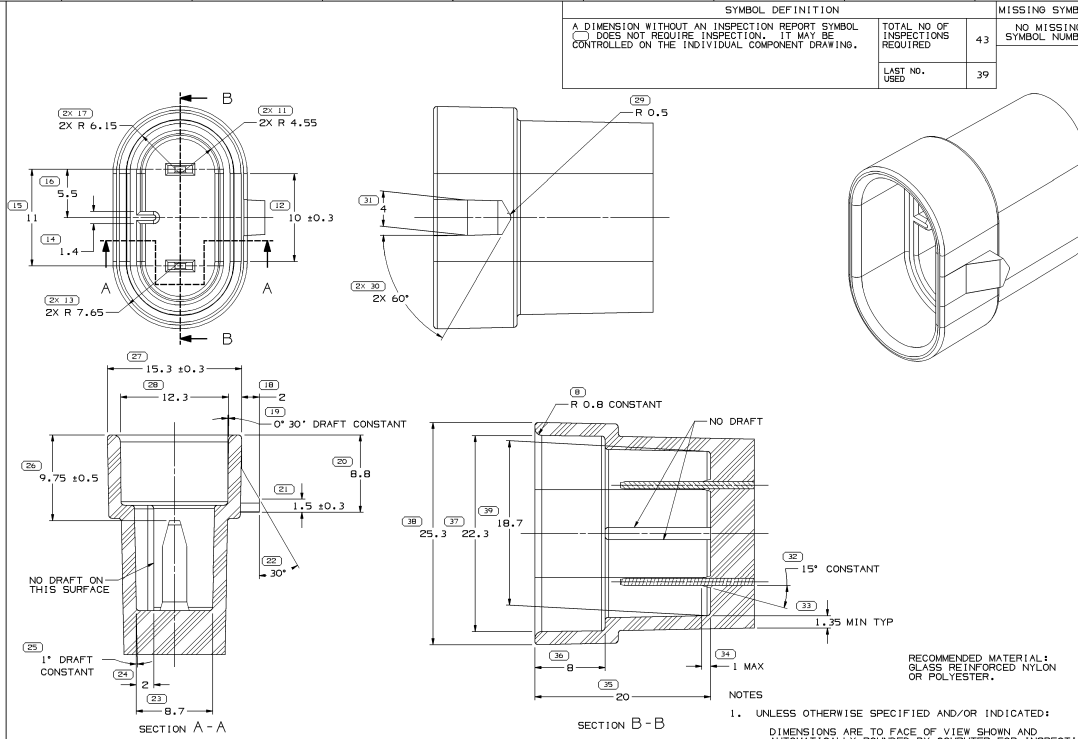
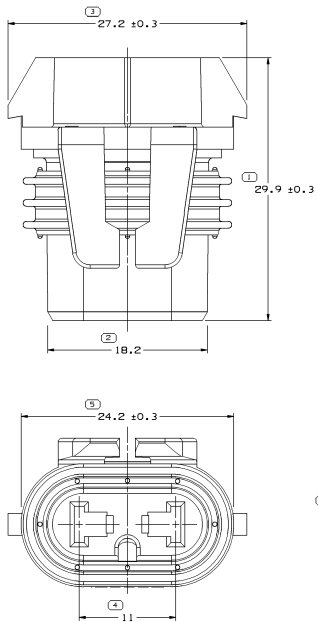
RECOMMENDED

- BASE METAL - CDA-210, EXTRA SPRING TEMPER
- TIN PLATING (WHERE APPLICABLE TO 125°C MAX CONTINUOUS USAGE): 0.0050/0.0025 MM (200/100 μIN) ELECTROPLATED TIN.
 - USAGE OF PLATING TYPES OTHER THAN RECOMMENDED MUST BE APPROVED BY DELPHI PACKARD ELECTRIC SYSTEMS ENGINEERING.

MINIMUMS

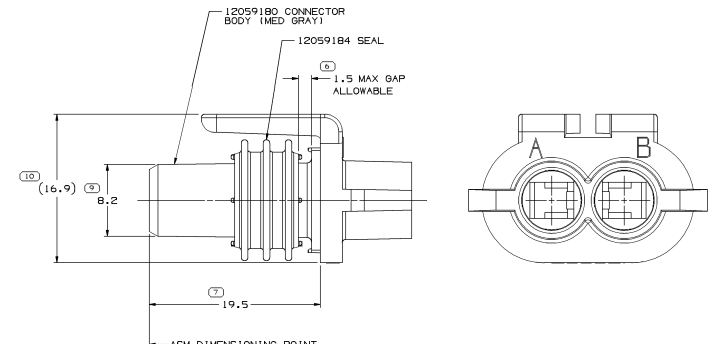
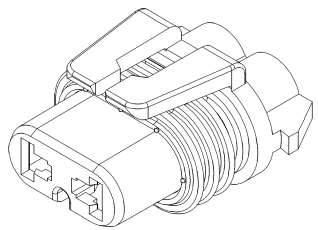
- ELECTRICAL CONDUCTIVITY - ≥28% IACS AT 20 °C. USE OF A MATERIAL WITH CONDUCTIVITY <28% IACS MUST BE APPROVED BY PACKARD ELECTRIC MATERIALS ENGINEERING.
- TENSILE STRENGTH - 420 - 475 MPa
- UNDERPLATING FOR TIN PLATING - FOR BASE MATERIALS CONTAINING 10% OR MORE ZINC, AN UNDERPLATE OF COPPER 0.0025 MM (100 μIN) MINIMUM THICK IS REQUIRED.
- PROCESSING LUBRICANT - ANY PROCESSING LUBRICANT REMAINING ON TERMINALS MUST NOT VARNISH OR DEGRADE THE ELECTRICAL PERFORMANCE OF THE CONNECTION UP TO A MAXIMUM TEMPERATURE OF 150°C. PROCESSING LUBRICANTS MUST BE APPROVED BY DELPHI PACKARD ELECTRIC SYSTEMS ENGINEERING.

MATING BLADE INFORMATION



MATING CONNECTOR INFORMATION

INSPECTION SYMBOLS SHOWN IN THESE VIEWS ARE FOR REFERENCE ONLY



SYMBOL DEFINITION		MISSING SYMBOLS	
A DIMENSION WITHOUT AN INSPECTION REPORT SYMBOL () DOES NOT REQUIRE INSPECTION. IT MAY BE CONTROLLED ON THE INDIVIDUAL COMPONENT DRAWING.	TOTAL NO OF INSPECTIONS REQUIRED	NO MISSING SYMBOL NUMBER	DATE
	43		01/19/06 R F1 - -
	LAST NO. USED		08/10/06 R F2 - -
	39		

DWG STATUS				REVISION HISTORY				AUTH	DR	APP'D
DATE	BY	REV	DESCRIPTION	DATE	BY	DESCRIPTION				
01/19/06	R F1	-	CLEARED REV. COL., REDRAWN TO PD AND UPDATED MATING BLADE INFO						279456/FSL/JM/MTM	
08/10/06	R F2	-	ADDED TOYOTA SERVICE PART ORDERS NOTE						469959/HCO/HCO/JS	

RECOMMENDED MATERIAL: GLASS REINFORCED NYLON OR POLYESTER.

- NOTES
- UNLESS OTHERWISE SPECIFIED AND/OR INDICATED: DIMENSIONS ARE TO FACE OF VIEW SHOWN AND AUTOMATICALLY ROUNDED BY COMPUTER FOR INSPECTION (SEE MATH MODEL FOR PRECISE DIMENSIONS). FOR ALL OTHER DIMENSIONS NOT SHOWN BUT REQUIRED FOR TOOL BUILD, SEE MATH MODEL FOR PRECISE TOOL PATH DATA. ALL RADI1 0.4. DRAFT IS 1° MAX ON ALL OUTSIDE SURFACES. LOCKING FEATURES ARE IDENTICAL.
 - SEALING SURFACES MUST BE FREE OF DEFECTS AND PARTING LINES.

- NOTES
- UNLESS OTHERWISE SPECIFIED AND/OR INDICATED: DIMENSIONS ARE TO FACE OF VIEW SHOWN AND AUTOMATICALLY ROUNDED BY COMPUTER FOR INSPECTION (SEE MATH MODEL FOR PRECISE DIMENSIONS). FOR ALL OTHER DIMENSIONS NOT SHOWN BUT REQUIRED FOR TOOL BUILD, SEE MATH MODEL FOR PRECISE TOOL PATH DATA.
 - WHEN PARTS ARE SHIPPED, THEY MUST BE PACKED IN PLASTIC BAGS OR SHIPPING CONTAINERS MUST BE LINED WITH PLASTIC LINERS. BAGS OR LINERS MUST BE SEALED TO AVOID ENTRY OF FOREIGN MATTER.
 - SEALING CODE 3 - DESIGN WILL PASS SALT FOG AND IMMERSION TEST AFTER CONDITIONING AS SPECIFIED IN ESA-644 (WEATHER-PACK), ESA-710 (METRI-PACK), ESA-650 (UNDERHOOD MICRO-PACK), C-400S (WORLD CONNECTOR), ETC. - WHEN MATED TO MATING PART OR EQUIVALENT
 - THIS PART IS NOT CONTROLLED FOR AUTOMATIC FEEDING.
 - THIS PRODUCT IS NOT CATEGORIZED AS AN APPEARANCE ITEM, MINOR IMPERFECTIONS INCLUDING, BUT NOT LIMITED TO, FLOW MARKS, COLOR BLENDISHES, GATE VESTIGES, AND SOFT FLASH THAT DO NOT AFFECT THE FIT, FORM, OR FUNCTION OF THE PART ARE PERMISSIBLE PER DPNP-4.7-CS-01.
 - FOR TOYOTA SERVICE PART ORDERS OF PART 900B0-9B03B CONNECTOR 12059181 AND TPA 12059185 MUST BE ASSEMBLED TOGETHER PRIOR TO SHIPMENT.
 - FOR APPLICATION DATA SEE THE APPLICATION DRAWING.

DELPHI
DELPHI PACKARD ELECTRICAL/ELECTRONIC ARCHITECTURE
WARREN, OH

DATE	PART DRAWING
01/19/06	
BY	DATE
YUEN L. BOZIS	21/06/05
APPROVED BY	DATE
A. SWARTZ	11/06/05
DATE	DATE
P. REEDY	14/06/05

UNLESS OTHERWISE SPECIFIED
THIS DRAWING IS TO BE CONSIDERED WITH THE 1:1 SCALE UNLESS OTHERWISE SPECIFIED. DIMENSIONS ARE TO FACE UNLESS OTHERWISE SPECIFIED. DIMENSIONS ARE TO FACE UNLESS OTHERWISE SPECIFIED. DIMENSIONS ARE TO FACE UNLESS OTHERWISE SPECIFIED.

ALL DIMENSIONS ARE IN MILLIMETERS

DRIVING NAME
ASM CONN 2 F W/P 280 SLD

DRIVING NUMBER
12059181

SCALE
1:1

DATE
01/19/06

BY
YUEN L. BOZIS

APP'D
A. SWARTZ

DATE
01/19/06

DESCRIPTION	UNIT	MIN	MAX	MIN	MAX	MIN	MAX	MIN	MAX
SMALLER DIMENSION	IN	0.0005	0.0010	0.0010	0.0015	0.0015	0.0020	0.0020	0.0025
LARGER DIMENSION	IN	0.0010	0.0020	0.0020	0.0030	0.0030	0.0040	0.0040	0.0050
SMALLER DIMENSION	MM	0.0127	0.0254	0.0254	0.0381	0.0381	0.0508	0.0508	0.0635
LARGER DIMENSION	MM	0.0254	0.0508	0.0508	0.0762	0.0762	0.1016	0.1016	0.1270