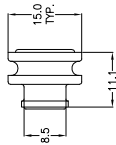


PDM-TWS-XX

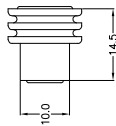
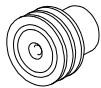
WIRE SIZE (SEE WIRE TABLE BELOW)
SEAL SIZE (SEE WIRE TABLE BELOW)

| | | | | |
|-------------|--|---------------|----|---------|
| PART NO. | PDM-TWS-XX (SALES) | | | |
| TITLE | CABLE SEALS - LEAR / DUCON | | | |
| CUSTOMER | STANDARD | | | |
| METRIC (MM) | SCALE | | | |
| REV # | REVISION | DATE | BY | APPROVE |
| 0 | INITIAL RELEASE ECN-12004 | 02-06 2012 | | |
| 1 | ADDED -D4 & -L6 VERSIONS ECN-12008 | 03-06 2012 | | |
| 2 | PURPLE COLOR OF -L2 & -S2 WAS BLUE ECN-12027 | 05-29 2012 | | |
| 3 | RELEASE FOR PRODUCTION | 12-18 2013 | RR | KS |

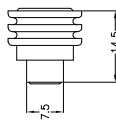
PDM-TWS-DX
DUCON



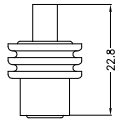
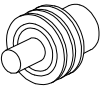
PDM-TWS-LX
LEAR - VARIATION 1



PDM-TWS-SX
LEAR - VARIATION 3



PDM-TWS-P
PLUG



| GEP CABLE SEALS (DUCON) | | | |
|--|-----------|----------|------------|
| PART # | CABLE DIA | MATERIAL | COLOR |
| PDM-TWS-D4 | 4.6-5.3 | SILICONE | LIGHT BLUE |
| GEP CABLE SEALS (LEAR VARIATION 1 - LONG) | | | |
| PDM-TWS-L1 | 2.7-3.0 | SILICONE | GREEN |
| PDM-TWS-L2 | 3.4-3.8 | SILICONE | PURPLE |
| PDM-TWS-L3 | 4.0-4.5 | SILICONE | ORANGE |
| PDM-TWS-L4 | 4.6-5.3 | SILICONE | LIGHT BLUE |
| PDM-TWS-L5 | 5.8-6.6 | SILICONE | GREY |
| PDM-TWS-L6 | 6.5-7.8 | SILICONE | RED |
| GEP CABLE SEALS (LEAR VARIATION 3 - SHORT) | | | |
| PDM-TWS-S1 | 2.7-3.0 | SILICONE | GREEN |
| PDM-TWS-S2 | 3.4-3.8 | SILICONE | PURPLE |
| PDM-TWS-S3 | 4.0-4.5 | SILICONE | ORANGE |
| PDM-TWS-S4 | 4.6-5.3 | SILICONE | LIGHT BLUE |
| PDM-TWS-S5 | 5.8-6.6 | SILICONE | GREY |
| PDM-TWS-P | N.A. | SILICONE | YELLOW |

| DELPHI 9.5 DUCON TERMINALS (FOR REF. ONLY) | | | |
|--|-------------|------------|--|
| PART # | RANGE (mm2) | PLATING | |
| 15327010 | 4.0-6.0 | TIN | |
| 15482568 | 4.0-6.0 | SILVER/TIN | |
| 10730408 | 10.0 | TIN | |
| 15408423 | 10.0 | SILVER/TIN | |
| 15458196 | 16.0 | TIN | |
| 15458198 | 16.0 | SILVER/TIN | |

| LEAR MAK8 TERMINALS (FOR REF. ONLY) | | | |
|-------------------------------------|-------------|------------|-----------|
| PART # | RANGE (mm2) | PLATING | VARIATION |
| 28224 306 179 | 2.5-4.0 | TIN | 1 |
| 28224 306 710 | 2.5-4.0 | SILVER | 1 |
| 28469 306 189 | 2.5-4.0 | SILVER/TIN | 3 |
| 28225 306 179 | 6.0-10.0 | TIN | 1 |
| 28225 306 710 | 6.0-10.0 | SILVER | 1 |
| 28459 306 189 | 6.0-10.0 | SILVER/TIN | 3 |
| 28243 306 179 | 10.0-16.0 | TIN | 1 |
| 28243 306 710 | 10.0-16.0 | SILVER | 1 |

NOTES:
1. MATERIAL: SILICONE

GEP POWER PRODUCTS
16830 Pheasant Drive
Brookfield, WI 53005

CONFIDENTIAL - The information contained in this document is the property of GEP Power Products. It is not for public disclosure. Possession of this document by anyone other than those specifically named herein is unauthorized. Reproduction or use of the information is prohibited. This document is to be returned to GEP Power Products upon completion of the purpose for which it is loaned or upon request.

COPYRIGHT - GEP Power Products. This is an unpublished work. The disclosure of this work to the public is prohibited. This unpublished work is protected by Federal Copyright law and all rights thereunder are reserved by GEP Power Products.

| TOLERANCES UNLESS OTHERWISE SPECIFIED | | THIRD ANGLE PROJECTION |
|---------------------------------------|-----------------|-------------------------|
| METRIC TOL | ENGLISH TOL | |
| 1 PL DEC.=±.25 | 2 PL DEC.=±.01 | ANGULAR TOL= ±2° |
| 2 PL DEC.=±.13 | 3 PL DEC.=±.005 | FRACTION TOL= ± 1/64 IN |