



8D ADD-ON TERMINAL

- Will only fit East Penn 8D battery
- Converts top post SAE 8D battery to fit side connections
- 3/8"-16 stud terminal (3/4" length)
- Includes 6 zinc-plated steel attachment screws
- Should be tightened to 4-6 ft-lbs.



Part #	Polarity	Packaging	Master Carton	
			Quantity	Weight
31100	1 Pos/1 Neg	Bag of 2	1	3.02 lbs.

WARNING: Cancer and Reproductive Harm www.P65Warnings.ca.gov

EPOXY-COATED WING NUT TERMINALS

- Clamp-type wing nut terminals convert standard post to marine or other special uses
- Brass plated wing nut
- Epoxy coating aids in polarity identification and corrosion resistance
- Positive terminal stud size is 3/8"
- Negative terminal stud size is 5/16"

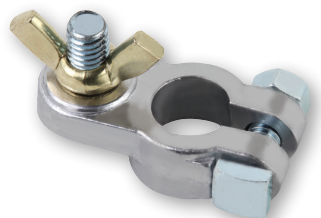


Part #	Polarity	Packaging	Master Carton	
			Quantity	Weight
00148	1 Pos/1 Neg	Clam Shell of 2	10	7.05 lbs.
05310	Positive	Bulk - Red	50	16.96 lbs.
05311	Negative	Bulk - Black	50	16.45 lbs.

WARNING: Cancer and Reproductive Harm www.P65Warnings.ca.gov

WING NUT TERMINALS

- Clamp type wing nut terminals convert standard post to marine or other special uses
- Brass plated wing nut
- Positive terminal stud size is 3/8"
- Negative and universal terminal stud size is 5/16"



05308

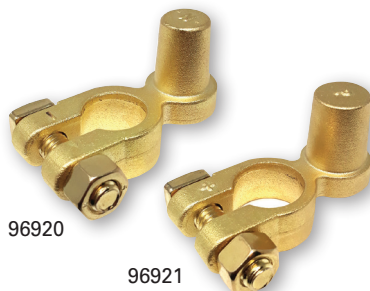
Part #	Polarity	Packaging	Master Carton	
			Quantity	Weight
00354	1 Pos/1 Neg	Clam Shell of 2	10	7.54 lbs.
00149	Universal	Card of 10	10	37.23 lbs.
05307 ¹	Universal	Bulk	50	18.39 lbs.
05308 ¹	Positive	Bulk	50	18.39 lbs.
05309 ¹	Negative	Bulk	50	18.39 lbs.

¹Wing nuts packaged in bag, inside box

WARNING: Cancer and Reproductive Harm www.P65Warnings.ca.gov

JIS CONVERSION TERMINALS

- Converts battery with standard SAE top posts to JIS/Pencil posts
- Durable brass construction



96920

96921

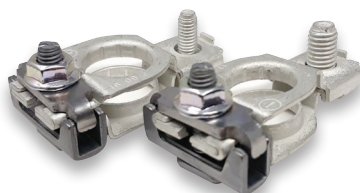
Part #	Polarity	Packaging	Master Carton	
			Quantity	Weight
96920	Negative	Bulk	10	3.00 lbs.
96921	Positive	Bulk	10	3.00 lbs.

WARNING: Cancer and Reproductive Harm www.P65Warnings.ca.gov

SAE-DIN-ISO REPLACEMENT TERMINAL

- Designed for OEM & Aftermarket Applications
- Designed for SAE, DIN & ISO Battery Posts
- Vertical drive clamping feature for easy reach
- Tin-plated brass & zinc-plated steel construction
- Meets OEM performance standards
- Positive terminal stud size is M6, negative is M8

US Patent # 9774110



00512

Part #	Polarity	Packaging	Master Carton	
			Quantity	Weight
31219	1 Pos/1 Neg	Clam of 2	10	3.02 lbs.

WARNING: Cancer and Reproductive Harm www.P65Warnings.ca.gov

BRASS TERMINALS

- 00512
- Fits 6 to 1 gauge cables
- Durable brass construction

00639

- Clamp type wing nut terminals convert standard post to marine or other special uses
- Durable brass construction



00639

Part #	Polarity	Packaging	Master Carton	
			Quantity	Weight
00512	Universal	Clam Shell of 1	10	2.12 lbs.
00639 ¹	1 Pos/1 Neg	Clam Shell of 2	10	3.79 lbs.

¹5/16" stud size

WARNING: Cancer and Reproductive Harm www.P65Warnings.ca.gov