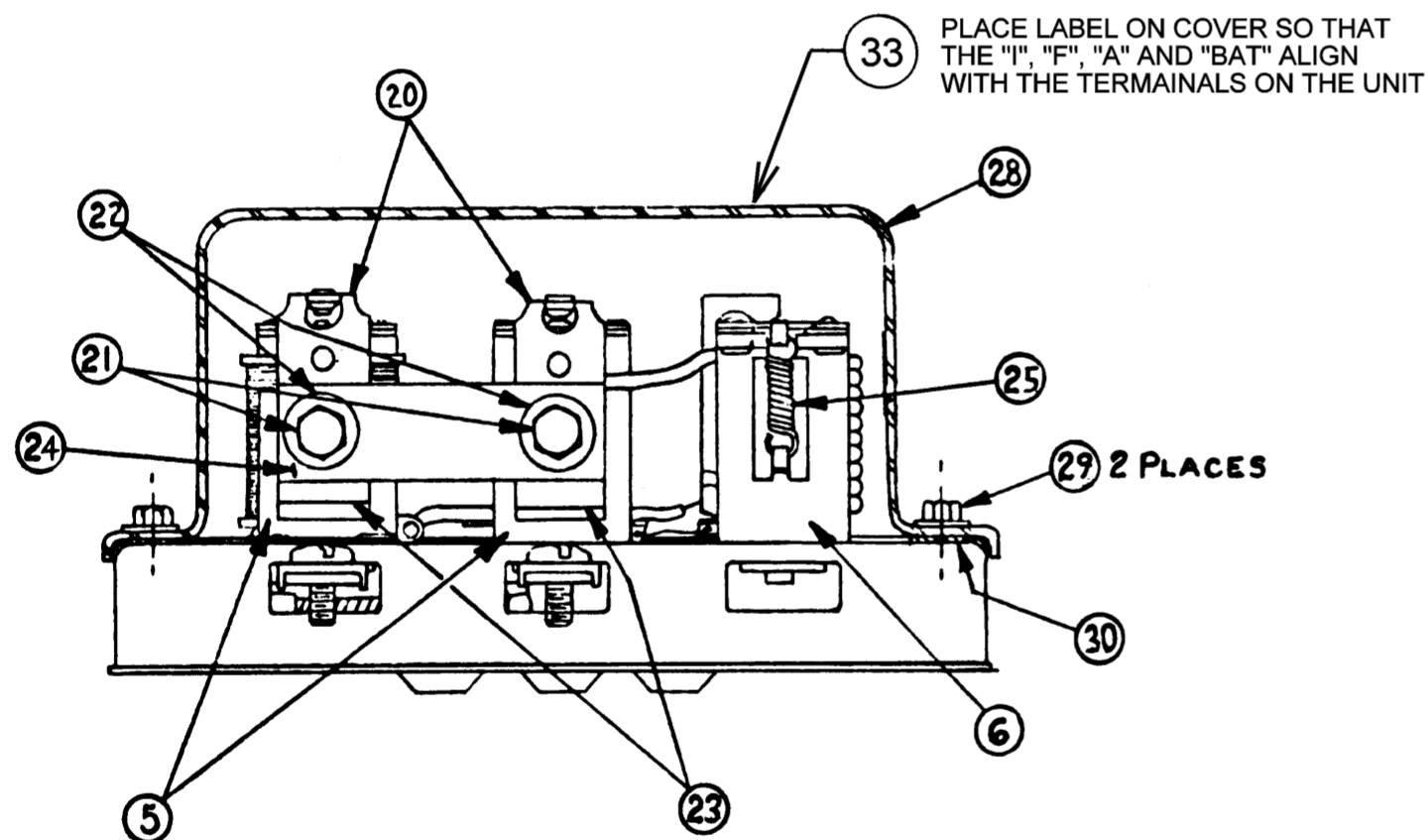


COVER REMOVED FOR CLARITY



NOTES:

1. The U-magnets are to be checked with a torque driver and shall withstand a minimum of 18 in.-lbs. and a maximum of 32 in.-lbs. torque before turning the base. The core shall not be collapsed more than .005 as a result of staking.
2. Connections to be soldered with sufficient heat to remove insulation and provide a solder connection that will meet standard quality solder specifications.
3. Rivets should be tight such that the armature will not move in side to side direction with seven pounds pull applied.
4. Torque screws to 3-5 pounds.
5. Tighten screws to 12 INCH LBS MIN.
6. Torque screws to 8-12 in.-lbs.
7. Install screws and folded washers loosely to field, battery, and armature terminals.
8. OUTLINE DRAWING: 400302

BILL OF MATERIAL & LABOR									
SEQ. NO	ITEM NO	PART NO.	QTY	DESCRIPTION	SPECIAL TOOLING	PROCESS SPECS.		LABOR	
						DWG NO	NOTE #	STD	
1		910046	1	COIL ASSEMBLY (CO)					
2		910035	1	COIL ASSEMBLY (VR)					
3		710052	1	CORE (CR)					
4		710053	1	PAPER TUBE					
5		910178	2	U-MAGNET ASSEMBLY					
6		910181	1	U-MAGNET ASSEMBLY					
7		910288	1	BASE ASSEMBLY					
8		100051-020	1	WASHER (CO)					
9		100051-019	2	WASHER (VR/CR)					
-		-	-	ASM. WASHERS, COILS, TUBING, &				1	
-		-	-	HOOK-UP LEADS					
10		810028	1	COIL (CR)					
11		811013	1	WASHER (CR)					
12		822076	1	WASHER (CO)					
13		810041-004	1	TUBING, 1 1/2" LG.					
14		510020	AR	SOLDER					
-		-	-	CRIMP & SOLDER					
15		910315	1	ARMATURE ASSEMBLY (VR)					
16		910318	1	ARMATURE ASSEMBLY (CR)					
17		910106	1	ARMATURE ASSEMBLY (CO)					
18		100001-047	6	RIVET					
19		521180	AR	BASE STAMP					
-		-	-	RIVET ARM. TO U-MAG & BASE STAMP				3	
20		910319	2	POINT MOUNT ASSEMBLY					
21		100109	2	SCREW					
22		710036	2	SHOULDER BUSHING					
23		710063	2	INSULATOR					
24		921120	1	CONNECTING BAR					
-		-	-	ASSEMBLY PARTS TO U-MAGNETS				4	
25		710005	1	SPRING					
-		-	-	POINT SET (CO)					
26		710005	1	SPRING					
27		710006	1	SPRING					
-		-	-	POINT SET (VR/CR)			400103	5	
-		-	-	POINT SET (VR/CR)				5	
-		-	-	ELECTRICALLY SET REGULATORS					
28		922203	1	COVER, BLACK					
29		100670-003	2	SCREW					
30		710002	1	GASKET					
-		-	-	ASSEMBLE COVER TO REGULATOR				6	
33		SL137G-3	1	LABEL					
-		-	-	DATE STAMP					
010		-	-	BELTLINE - II OPS.					

						TOLERANCES		Automotive Controls Corporation Independence, Kansas		
9-2-16	E	34464	510020 WAS 500181, REMOVED 100923 & 100671-005	CS	MCB	DECIMAL		SCALE	DRAWN BY	AM
9-15-10	D	29935	500181 WAS 510020	DM	ACD	± N/A		FULL	APPROVED BY	ES
11-21-08	C	29174	ADDED NO. 33	MLH	MCB	FRACTIONAL	TITLE	VOLTAGE REGULATOR (6 VOLT)		
12-1b-04	B	27172	REVISED BDM PER P.E.	JP	ES	± N/A	DATE	DRAWING NUMBER	2179	ISSUE
2-14-96	A	20128	400302 WAS 400301	AM	ES	ANGULAR	9-21-95			E
DATE	SYM	P.E. NO.	REVISION	DR.	CK'D	± N/A	P.E. NO: 19817			