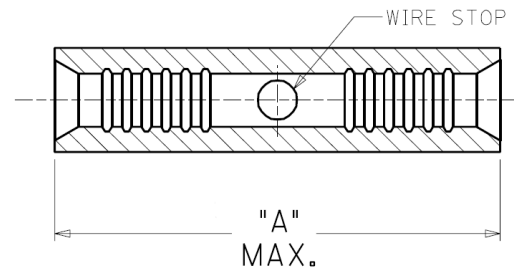


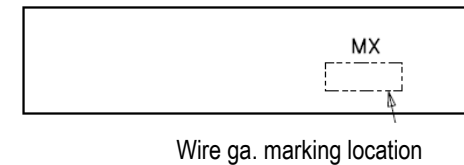
# Non-Insulated Butt Connectors - Butted Seam

Stock No.	Wire Range	A Max	C Min	B Max
30060	22-18	.580	.055	.131
31060	16-14	.580	.078	.163
32060	12-10	.585	.124	.225

Stock No. 30260-32260



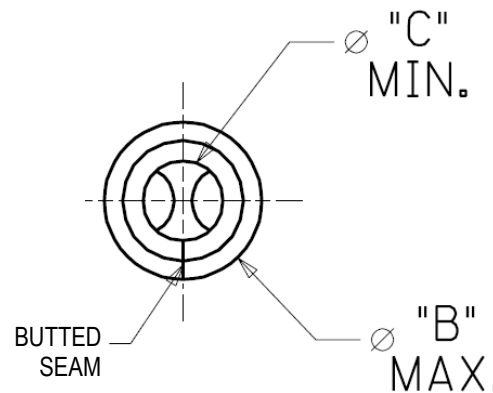
Stock No. 33060-35060



## Features:

- Terminal Material: Copper
- Terminal Plating: Electro-tin
- Barrel seam: Brazed
- Wire Size:
  - 22-18 ga. 0.25-1.3 mm<sup>2</sup>
  - 16-14 ga. 1.0-2.6 mm<sup>2</sup>
  - 12-10 ga. 4.0-6.0 mm<sup>2</sup>

Stock No. 30260-32260



Stock No. 33060-35060

