

Series 21000 DC Converter

21060C00, 21080C00, 21100C00

The 21000 series of DC converters provide up to 100A of 12V power from a 24V input. Providing a fixed output voltage of 13.5V, the 21000 series of DC converters provide clean and reliable power for high current 12V loads.

Features & Benefits

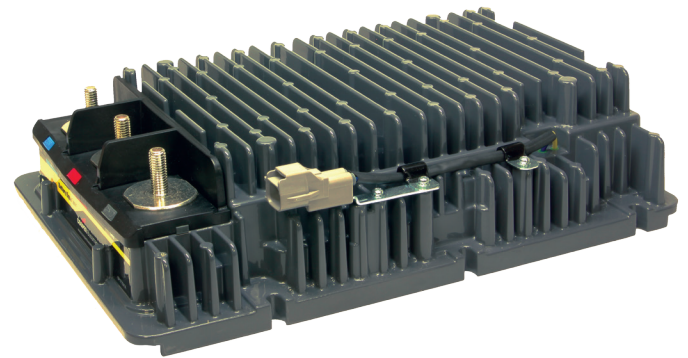
- Easily implemented into a system providing 12V power
- Allows use of 12V electrical components in a 24V electrical system providing greater system flexibility
- Leverage increased power of a 24V starting and charging system without having to migrate all components to 24V.
- Proven reliability with over 200,000 fielded units

Key Differentiators

- IP67 Sealing
- Up to 100A DC Converter
- MIL 461 EMC performance
- Operation to 85C
- Over temperature protection with reduced output current

Options

- 60A, 80A or 100A models available
- Snap on terminal cover
- Terminal barriers
- Color coded terminal labels
- RoHS



Standards & Certifications

SAE J1455, J1113, CISPR 25, E mark

Model	Voltage (input / output)	Output Current	Design Features
21060C00	24 / 12	60	IP 67, high current converter
21080C00	24 / 12	80	IP 67, high current converter
21100C00	24 / 12	100	IP 67, high current converter

Dimensions in Inches (mm)

