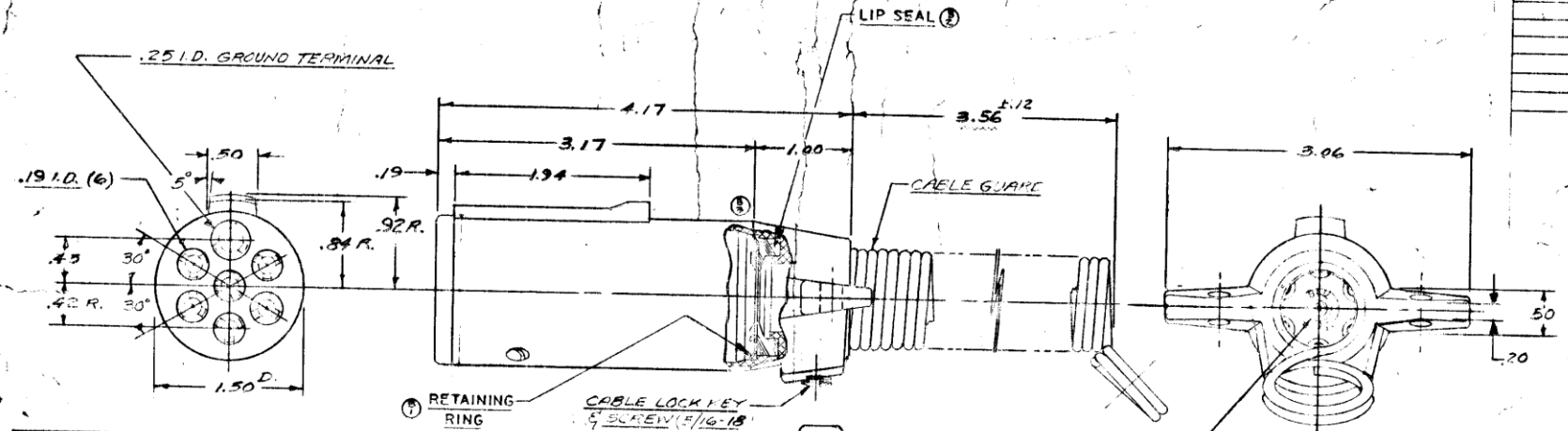


DEPT.
1
2
3
4
5
6
7
8
9
10
11
12
13
14
15
16
17
18
19
20

WHERE
USE



RECOMMENDED ATA WIRING
PER SPEC. E-1-1961

WIRE COLOR	LAMP & SIGNAL CIRCUITS
1 WHITE	GROUND RETURN TO TRUCK VEHICLE IDENTIFICATION, CLEARANCE & SIDE-MARKER LAMPS
2 BLACK	LEFT HAND TURN SIGNAL & DISABILITY SIGNAL
3 YELLOW	STOP LAMPS
4 RED	RIGHT HAND TURN SIGNAL & DISABILITY SIGNAL
5 GREEN	TAIL, CLEARANCE & SIDE-MARKER LAMPS
6 BROWN	AUXILIARY CIRCUITS

6 TERMINALS WITH HOLE FOR 1/8" DIA. WIRE
GROUND TERMINAL WITH HOLE FOR UP TO #8 GA. WIRE.

MATERIAL: (C)
SHELL - 40% GLASS FILLED NYLON (BLACK)
PLUG - ABS (BLACK)
TERMINALS - BRASS, CAD PLATED
CABLE LOCK KEY - ALUMINUM
INTERNAL O-RING SEAL - PVC
(R) RETAINING RING - STEEL, PHOSPHATE COATED
ALL STEEL PARTS ZINC OR CHD PLATE.

NOTES:
1. MEETS ATA & SAE STANDARDS FOR INTERCHANGABILITY.
2. ELECTRICAL RATING: 40 AMPS CONTINUOUS DUTY, 6-25 VOLTS D.C.

DESIGNED BY	DRAWN BY P.D.	CHECKED BY [Signature]	APPROVED BY	SCALE FULL	FRACTIONS 1/2	DECIMALS .01	ANGLES 1/2	3-1-39
ECN	REVISIONS - AUTHORIZED BY - CHANGED BY - DATE	ECN	REVISIONS - AUTHORIZED BY - CHANGED BY - DATE	MATERIAL	TITLE SEALED PLUG WITH CABLE GUARD 7 CONTACT			
12621	DEL TO PROD			FINISH	NO 11-910			
12616					REV. C			