

# GB3000 Series

## Pass-thru distribution block

The GB3000 pass-thru distribution blocks allow one ground or power device to meet multiple ground/power requirements, in both the cab and engine compartment of your vehicle. A gasket is included for ingress protection. Designed to meet all your ground/power needs, the GB3000 series provides robust connections, eliminates the need to stack cables and reduces associated warranty claims based on affiliated problems. The GB3000 series also provides power distribution suitable for many feed thru applications in marine, construction, agriculture, bus, military, RV and specialty vehicles.

### Specifications

Current: 300A maximum

Temperature rating: -40°F (-40°C) to 185°F (85°C)

Torque: M6 stud 50 in-lbs max; M6 mounting 50 in-lbs max

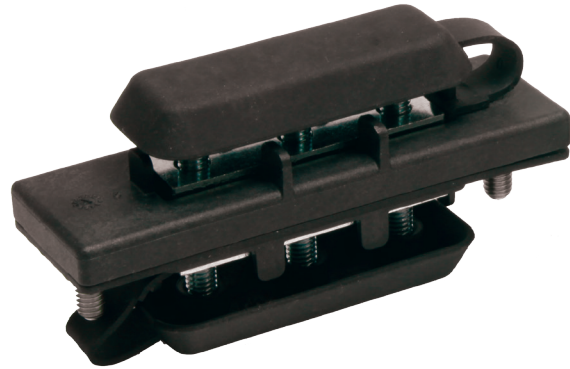
Termination: M6 nuts

Materials:

- Housing: Black UL rated 94V-0 thermoplastic
- Cover: Black or red santoprene cover (rated UL 94V-0) for protection from accidental shorts
- Current carrying studs: Zinc-plated brass
- Mounting studs: Stainless steel
- Gasket: Black santoprene gasket rated UL 94V-0
- RoHS Compliant: Yes

Servicable parts:

- Cover: B151-7192 (black), B151-7194-R (red)
- Bus bar: B109-7050



## Ordering information

**GB300X - X X (X)**

Series	Option	Cover	Marking
GB3000 = Ground block GB3001 = Pass thru block	0 = No nut 1 = Nuts in bulk	B = Black R = Red	Consult factory for special labels

## Dimensions in Inches (mm)

