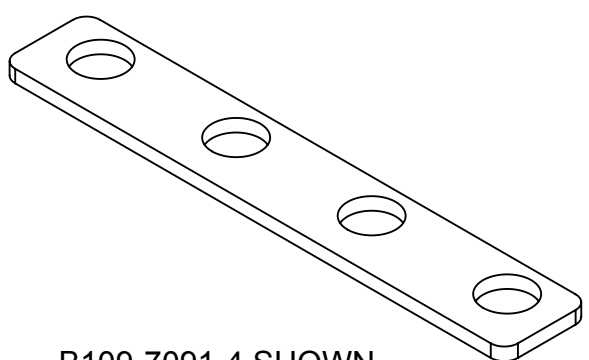
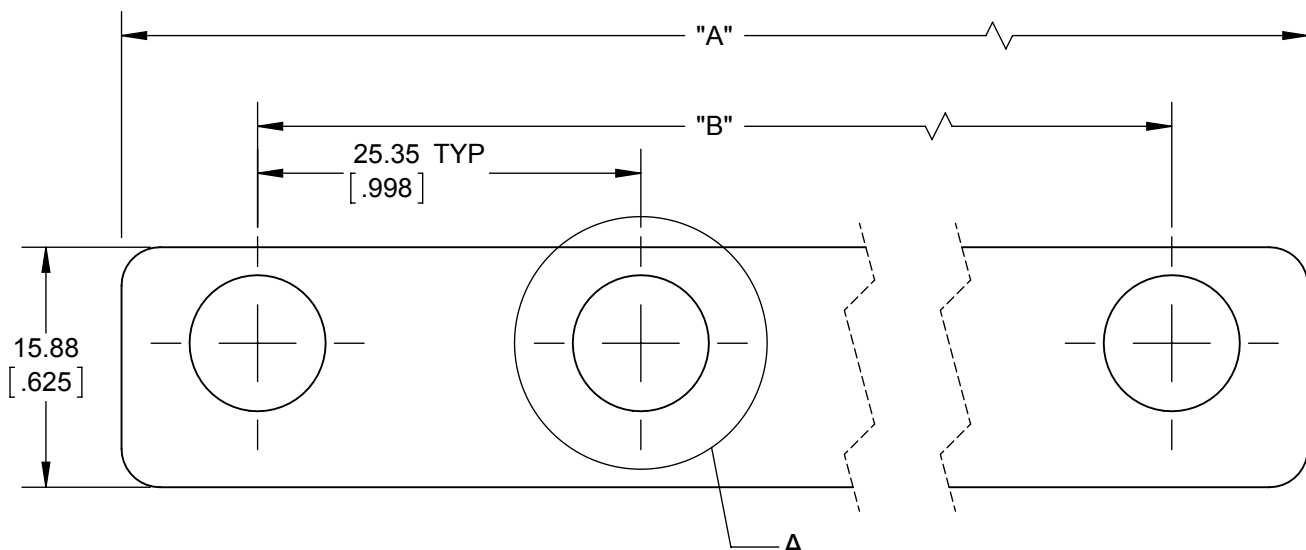
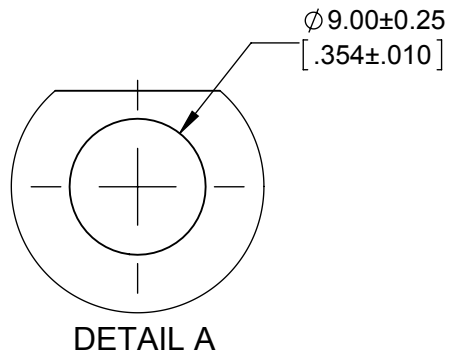
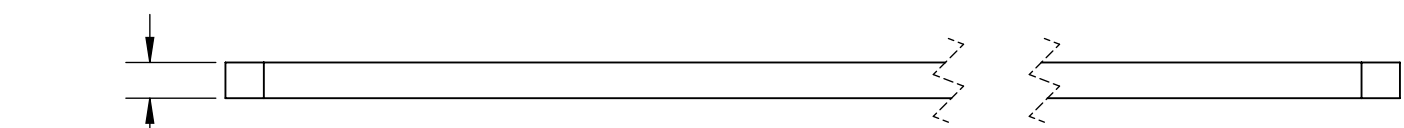


**EATON CORPORATION - CONFIDENTIAL AND PROPRIETARY**  
 NOTICE TO PERSONS RECEIVING THIS DOCUMENT AND/OR TECHNICAL INFORMATION  
 THIS DOCUMENT, INCLUDING THE DRAWING AND INFORMATION CONTAINED THEREON, IS CONFIDENTIAL AND IS THE EXCLUSIVE PROPERTY OF EATON CORPORATION, AND IS MERELY ON LOAN AND SUBJECT TO RECALL BY EATON AT ANY TIME, BY TAKING POSSESSION OF THIS DOCUMENT. THE RECIPIENT ACKNOWLEDGES AND AGREES THAT THIS DOCUMENT CANNOT BE USED IN ANY MANNER ADVERSE TO THE INTERESTS OF EATON AND THAT NO PORTION OF THIS DOCUMENT MAY BE COPIED OR OTHERWISE REPRODUCED WITHOUT THE PRIOR WRITTEN CONSENT OF EATON. IN THE CASE OF CONFLICTING CONTRACTUAL PROVISIONS, THIS NOTICE SHALL GOVERN THE STATUS OF THIS DOCUMENT.  
 ©2017 Eaton Corporation, All Rights Reserved.

REVISIONS				
REV.	DESCRIPTION	ECO NO	DATE	BY
A	RELEASED TO PRODUCTION	ECO-120908	2017/05/09	PD



B109-7091-4 SHOWN



NOTES:

1. FINISH: TIN PLATED (SEE PLATING COLUMN IN TABLE1).
2. MATERIAL: COPPER.
3. BUSBARS ARE USED FOR ALL ASSEMBLIES GREATER THAN OR EQUAL TO LMI2.
4. BUSBARS CAN BE ORDERED INDIVIDUALLY. BUSBARS ARE INCLUDED WHEN ORDERING ASSEMBLED PRODUCTS (LMI2 AND LARGER).

P/N	HOLE QTY.	"A"	"B"	PLATING
B109-7091-2	2	43.35	25.35	PRE-PLATED
B109-7091-3	3	68.70	50.70	PRE-PLATED
B109-7091-4	4	94.05	76.05	POST-PLATED
B109-7091-5	5	119.40	101.40	PRE-PLATED
B109-7091-6	6	144.75	126.75	PRE-PLATED
B109-7091-7	7	170.10	152.10	PRE-PLATED

TABLE 1



CAPSULE AROUND DIMENSION INDICATES INCOMING INSPECTION REQUIRED  
 INDICATES CRITICAL CHARACTERISTIC (MUST MEET CPK REQUIREMENTS)  
 IN ACCORDANCE WITH CRP-SS-01-01-03 SUPPLIER MANUAL

DRAWING IN ACCORDANCE WITH  
 ASME Y14.100 - 2013  
 ASME Y14.1M - 2012  
 [ASME Y14.1 - 2012]  
 ASME Y14.5 - 2009

UNLESS OTHERWISE SPECIFIED DIMENSIONS ARE IN MILLIMETERS  
 X ±3 X° ±1  
 X.X ±0.5 X.X° ±0.5  
 X.XX ±0.25  
 THIRD ANGLE PROJECTION

MATERIAL: COPPER  
 FINISH: TIN PLATED  
 RELATED DOCUMENT: LMI FUSE HOLDER

DRAFTER/DESIGNER: P. DENIS  
 DATE: 2017/05/09  
 ENGINEERING APPROVED: K. PFLUEGER  
 DATE: 2017/05/09  
 CHANGE RESPONSIBILITY: TUALATIN  
 ECO No: ECO-120908

TITLE: LMI BUSBAR - SALES  
 SIZE B  
 DRAWING NUMBER: B109-7091-X-SALES  
 REVISION A  
 CAGE CODE NO.  
 CLASS CODE  
 SCALE: 2:1  
 SHEET: 1 OF 1